

***Centrtractus dubius* Printz, 1914**

**Most likely ID:** n.a.

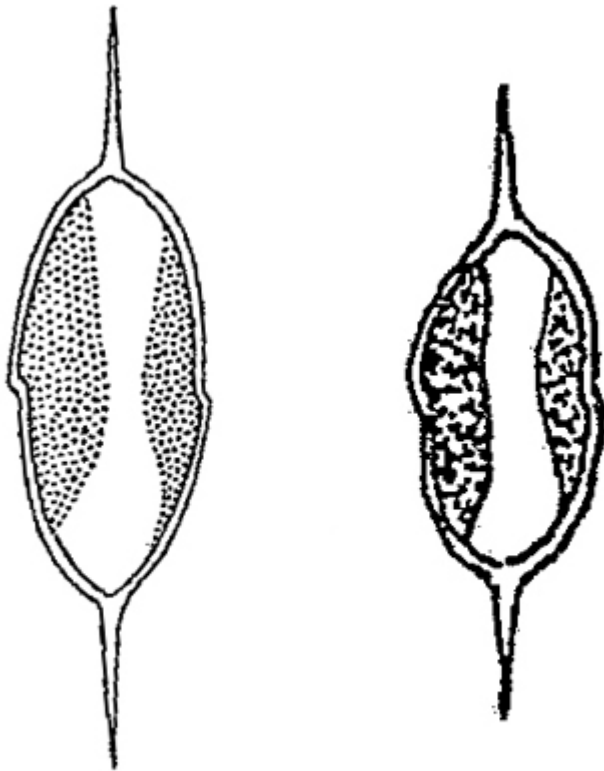
**Synonym:** n.a.

**Sampling location:** [Simmelried](#)

**Phylogenetic tree:** [Centrtractus dubius](#)

**Diagnosis:**

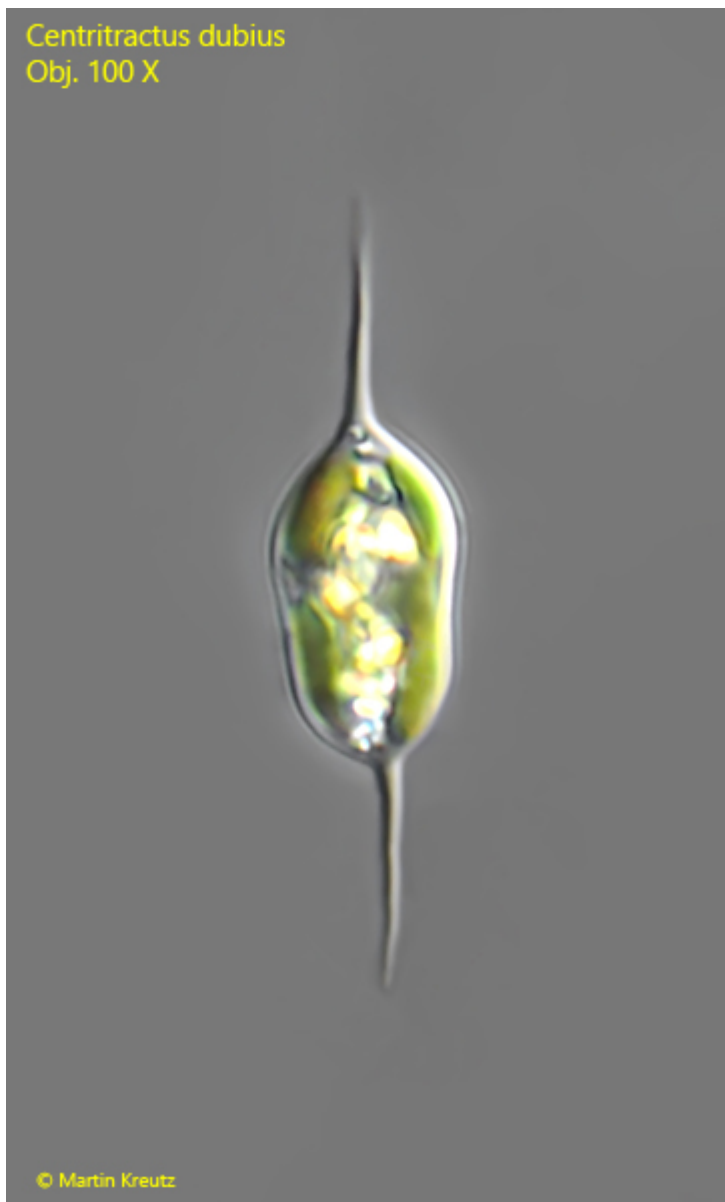
- cells solitary, short ellipsoidal or cylindrical
- both ends rounded with coarse spines
- length of cell without spines 10–14 µm, width 5–6 µm
- cell wall in the middle thin for reproduction
- 2–3 chromatophores
- length of spines about width of cell



after Printz

### Centritractus dubius

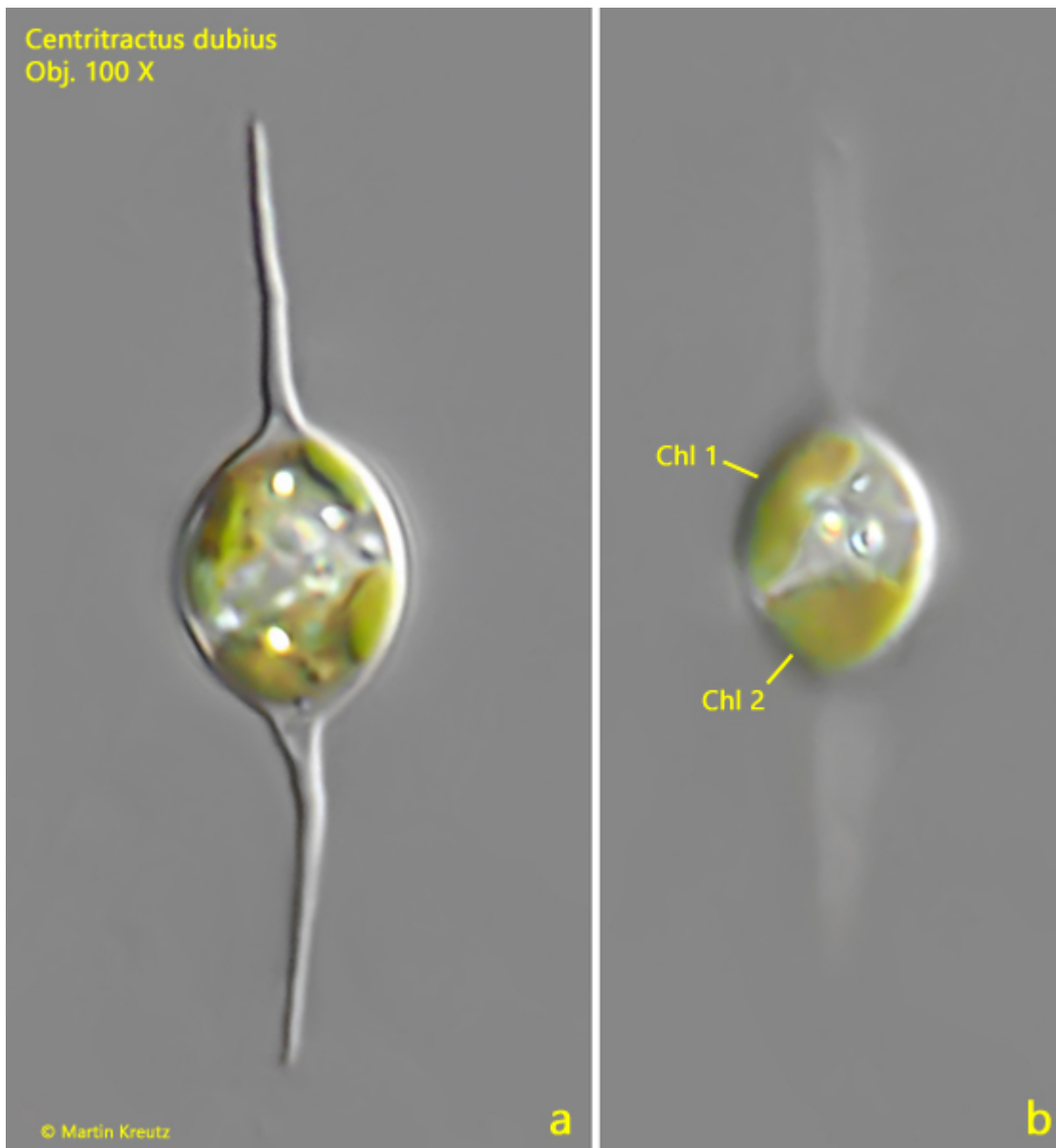
The tiny alga *Centritractus dubius* belongs to the yellow-green algae (Xanthophyceae). I have found *Centritractus dubius* so far only in the [Simmelried](#). In the samples *Centritractus dubius* is hard to find due to its small size. However, it often colonizes [floating coverslips](#) where it can easily be observed. I observed that the older cells are often surrounded by a layer of iron precipitate and then appear reddish to brownish (s. fig. 2). *Centritractus dubius* has so far only been found in Norway. Further findings are not known. This may be because it is difficult to find among detritus and decomposing plant material. Presumably, with more sample preparations using floating cover slips, the number of recordings of this yellow-green alga would rise.



**Fig. 1:** *Centritractus dubius*. L = 12  $\mu\text{m}$  (with spines 27  $\mu\text{m}$ ). Obj. 100 X.



**Fig. 2:** *Centritractus dubius*. L = 12  $\mu\text{m}$  (with spines 22  $\mu\text{m}$ ). A second specimen slightly covered with iron precipitation. Obj. 100 X.



**Fig. 3:** *Centritractus dubius*. L = 9  $\mu\text{m}$  (with spines 26  $\mu\text{m}$ ). Two focal planes of a third specimen. Note the two chloroplasts (Chl 1, Chl 2). Obj. 100 X.