

Chaetonotus italicus
(Balsamo & Todaro, 1995)

Most likely ID: n.a.

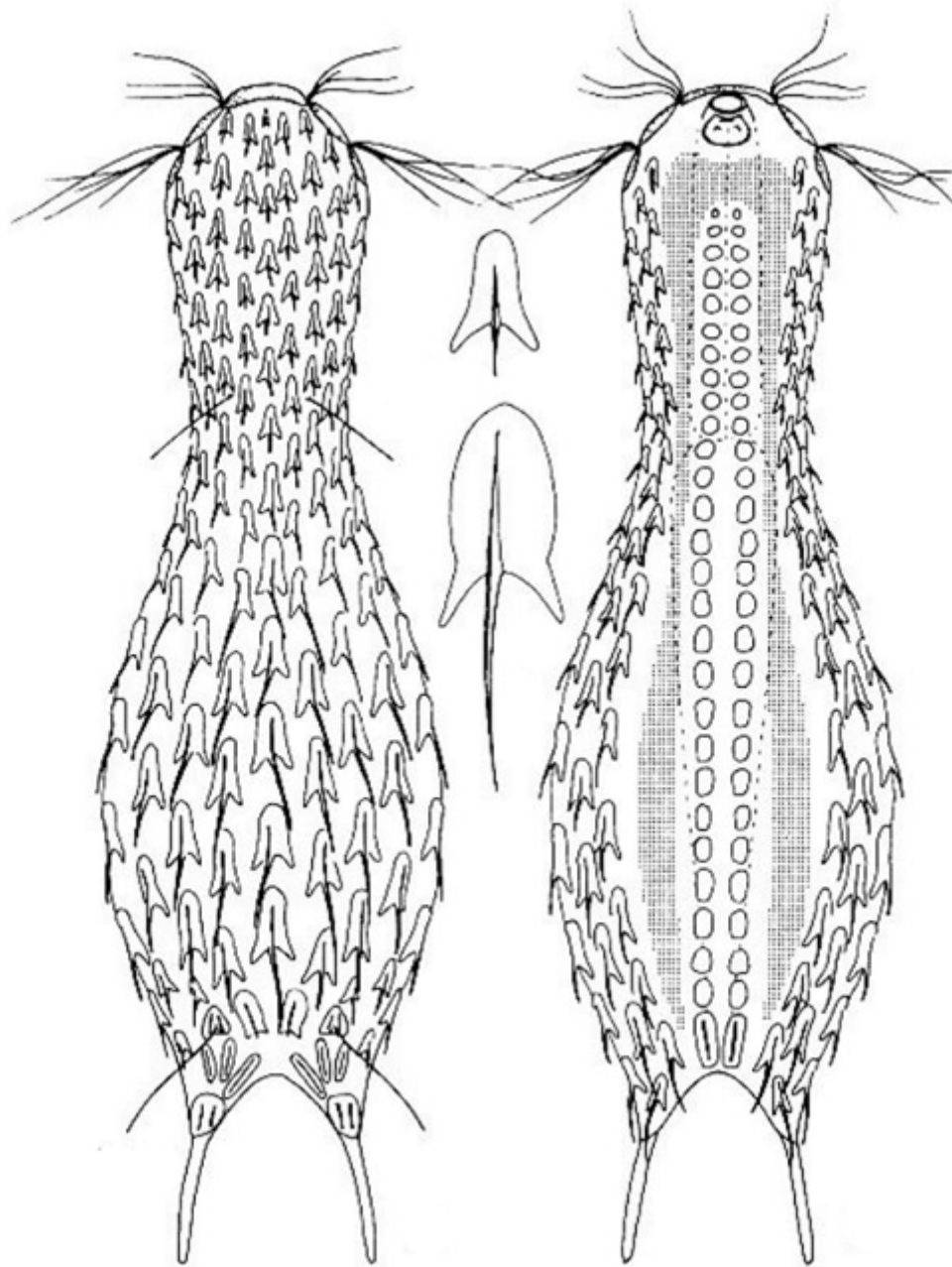
Synonym: n.a.

Sampling location: [Simmelried](#)

Phylogenetic tree: [Chaetonotus italicus](#)

Diagnosis:

- body short and stocky, shoe-shaped
- length 90–110 µm
- head five-lobed
- ventral a trapezoid hypostomium
- dorsal 7 rows of trilobed, keeled scales (6.2–7.0 µm) with simple spines (3.2–9.7 µm)
- dorsal spines thick and straight
- two pairs of dorsal, tactile bristles
- at the dorsal base of furca three elongated keeled scales arranged around a rounded scale with two parallel keels
- ventral side with two rows of roundish or rectangular scales, 1.2 µm
- ventral scales become larger (2.8–4.0 µm) toward posterior end
- ventrally two oval, keeled terminal scales (6.4–6.8 µm)



after Balsamo & Todaro

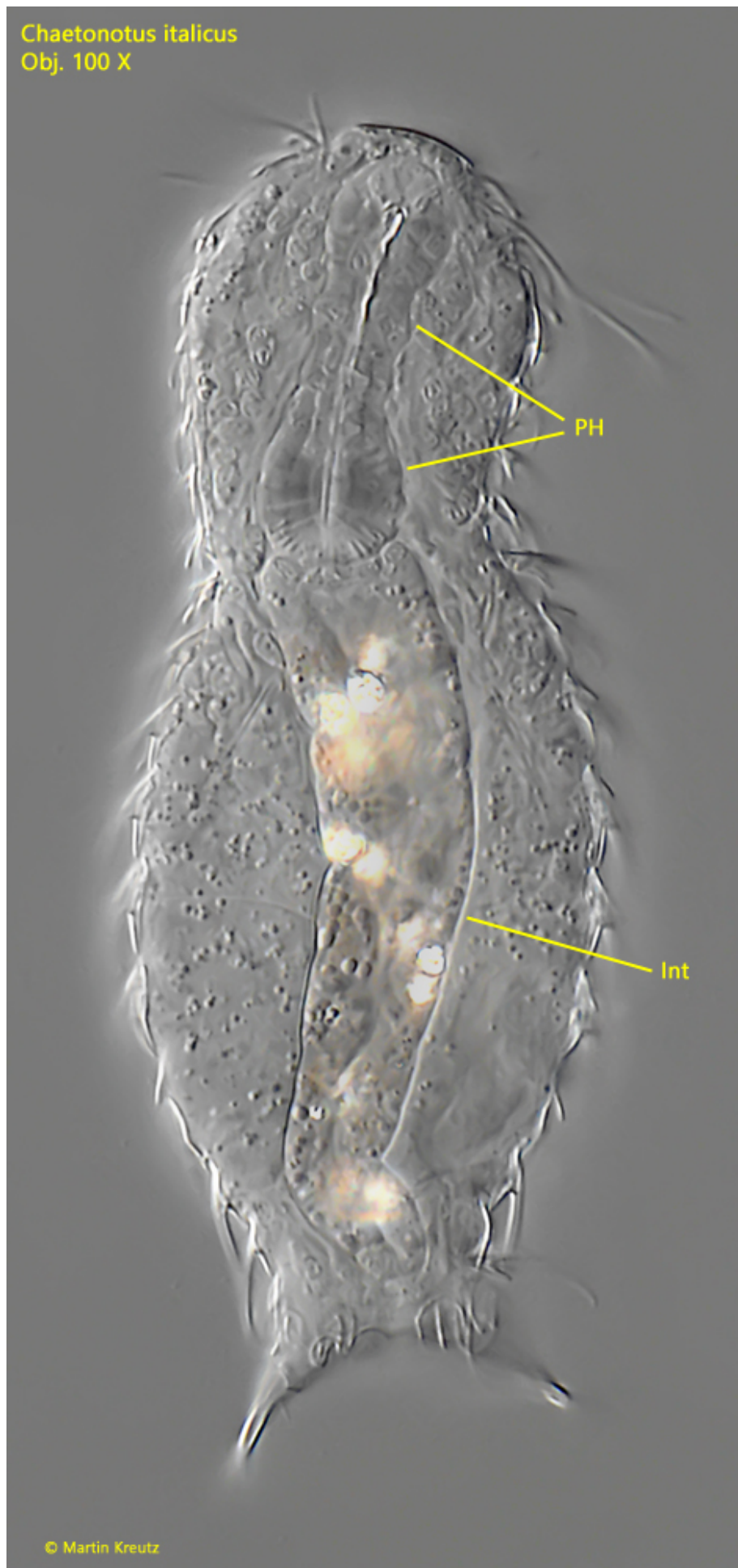
Chaetonotus italicus

Chaetonotus italicus was first described by Balsamo and Todaro in 1995 and has so far only been recorded in Italy. I found a specimen in the [Simmelried](#) in September 2023 in the uppermost layer of mud, among rotting plants. As it is quite small at around 100 μm , I may have overlooked it earlier. My specimen was 95 μm long.

I can essentially confirm the description by Balsamo and Todaro. The three-lobed dorsal scales bear a straight spine, which is slightly keeled. In the last quarter there are two special scales with two keels (s. figs. 3 b and 5). I was also able to recognize the two rows of smooth ventral scales, although I had to focus from the dorsal side (s. fig. 6). The two

enlarged terminal scales on my specimen had a distal incision and were not completely oval (s. fig. 6). I could not recognize the trapezoidal hypostomium described by Balsamo and Todaro, although I have only been able to examine one specimen so far.

Chaetonotus italicus
Obj. 100 X



© Martin Kreutz

Fig. 1: *Chaetonotus italicus*. L = 95 μ m. A slightly squashed specimen from dorsal with focal plane on the pharynx (PH) and the intestine (Int). Obj. 100 X.

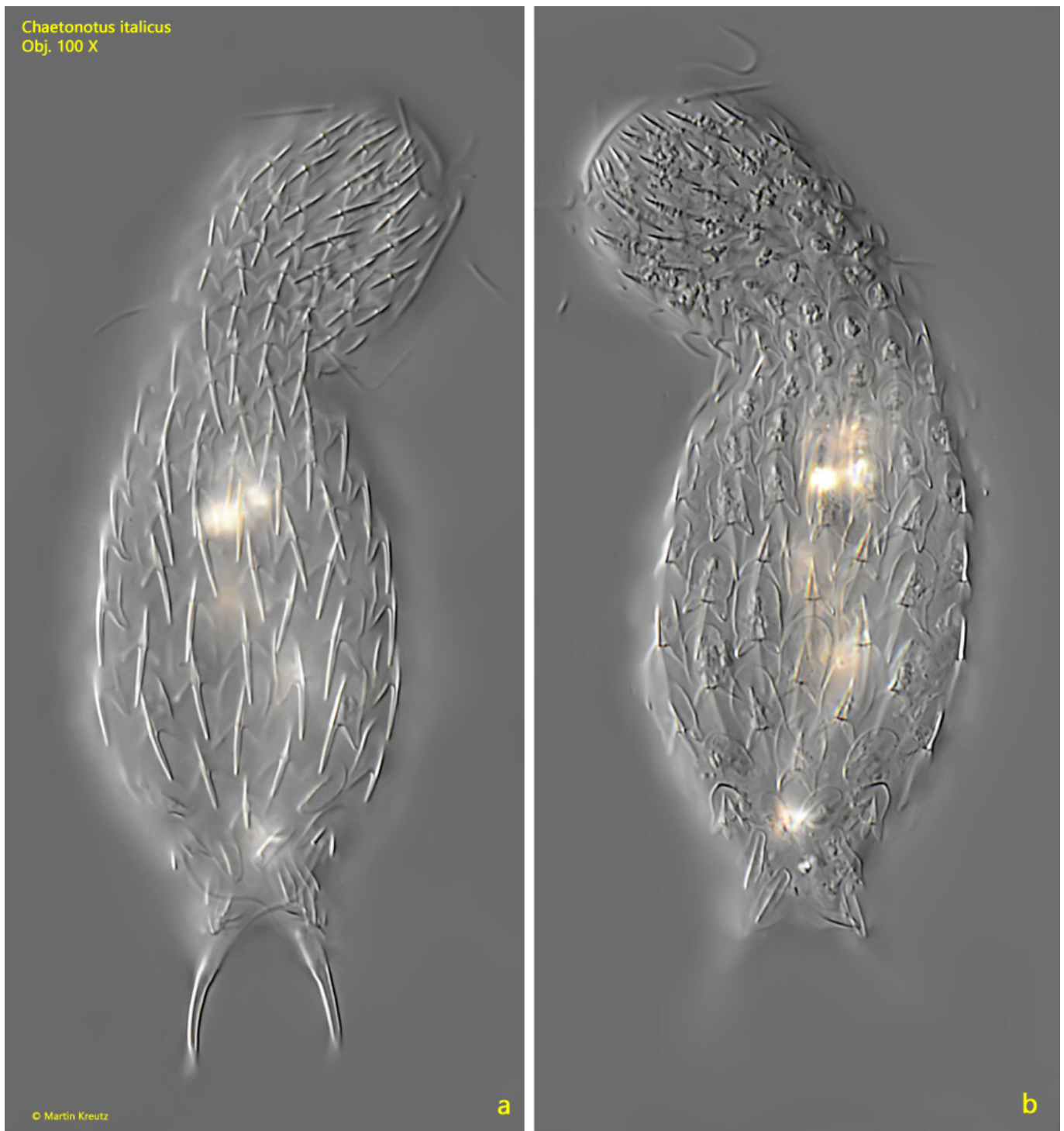


Fig. 2 a-b: *Chaetonotus italicus*. L = 95 μ m. A slightly squashed specimen from dorsal with focal plane on the straight spines and the dorsal scales. Obj. 100 X.

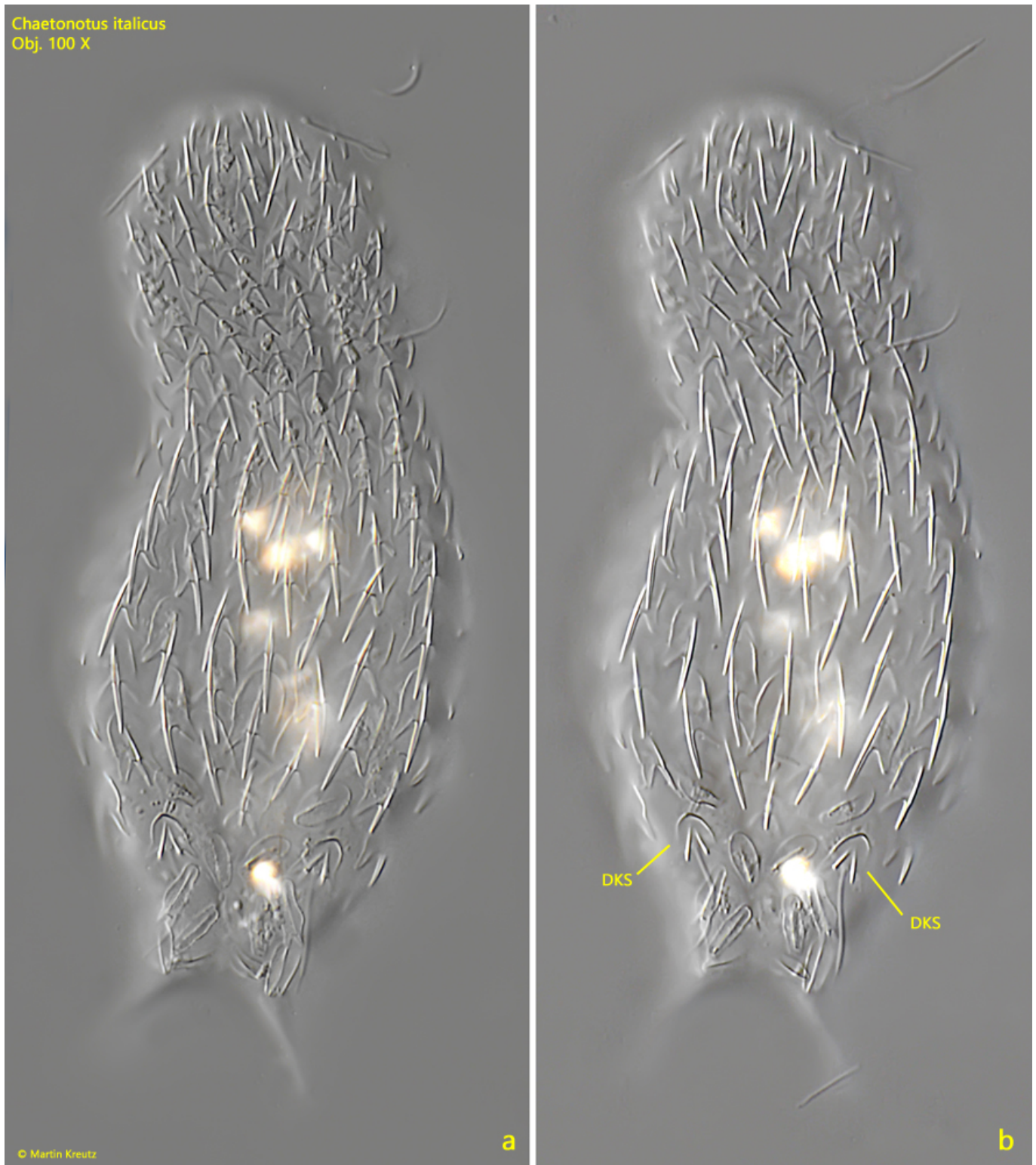


Fig. 3 a-b: *Chaetonotus italicus*. L = 95 μ m. The same specimen as shown in fig. 2 a-b but stronger squashed. Note the double keeled scales (DKS) in the posterior fourth. Obj. 100 X.

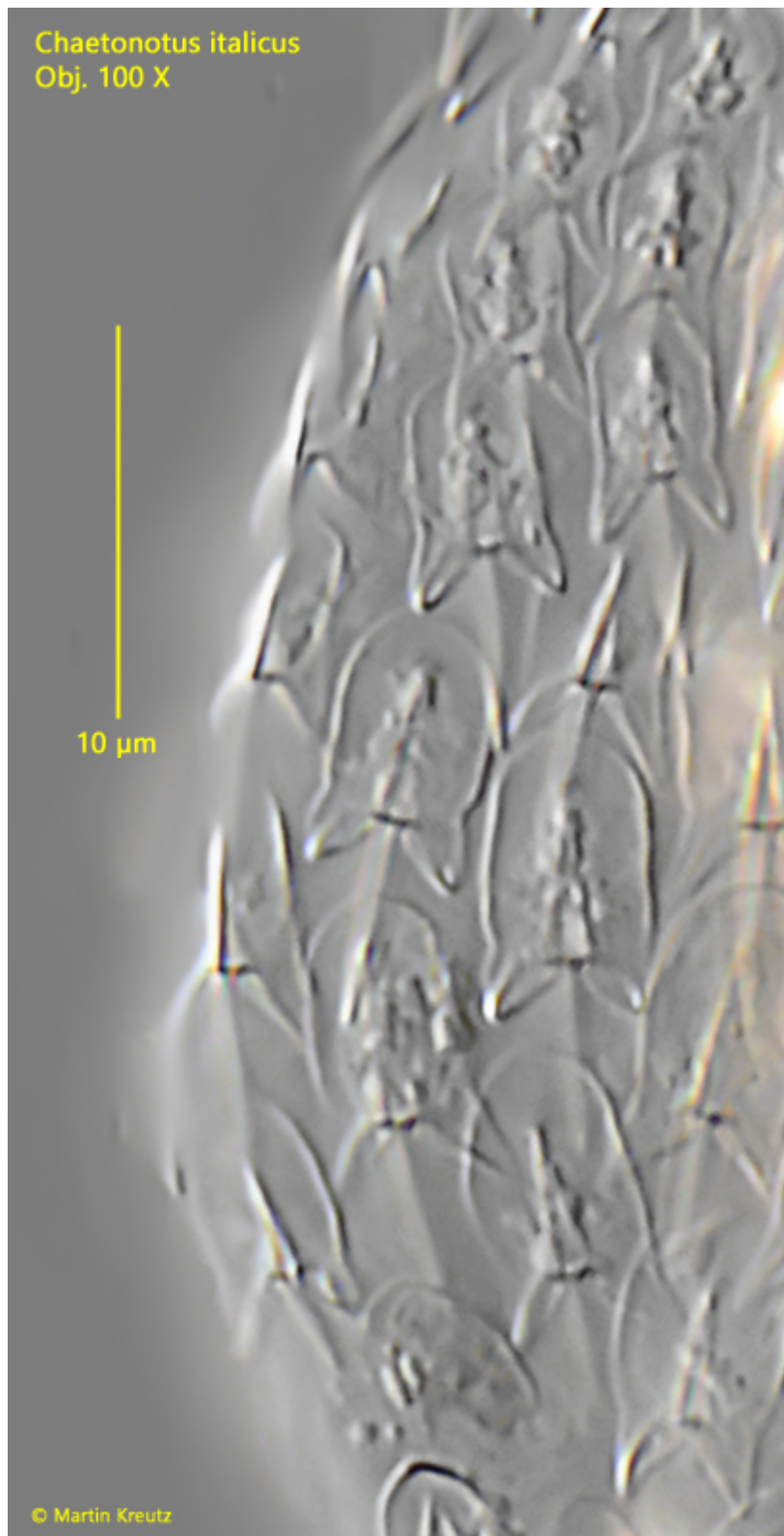


Fig. 4: *Chaetonotus italicus*. The trilobed dorsal scales in detail. Obj. 100 X.

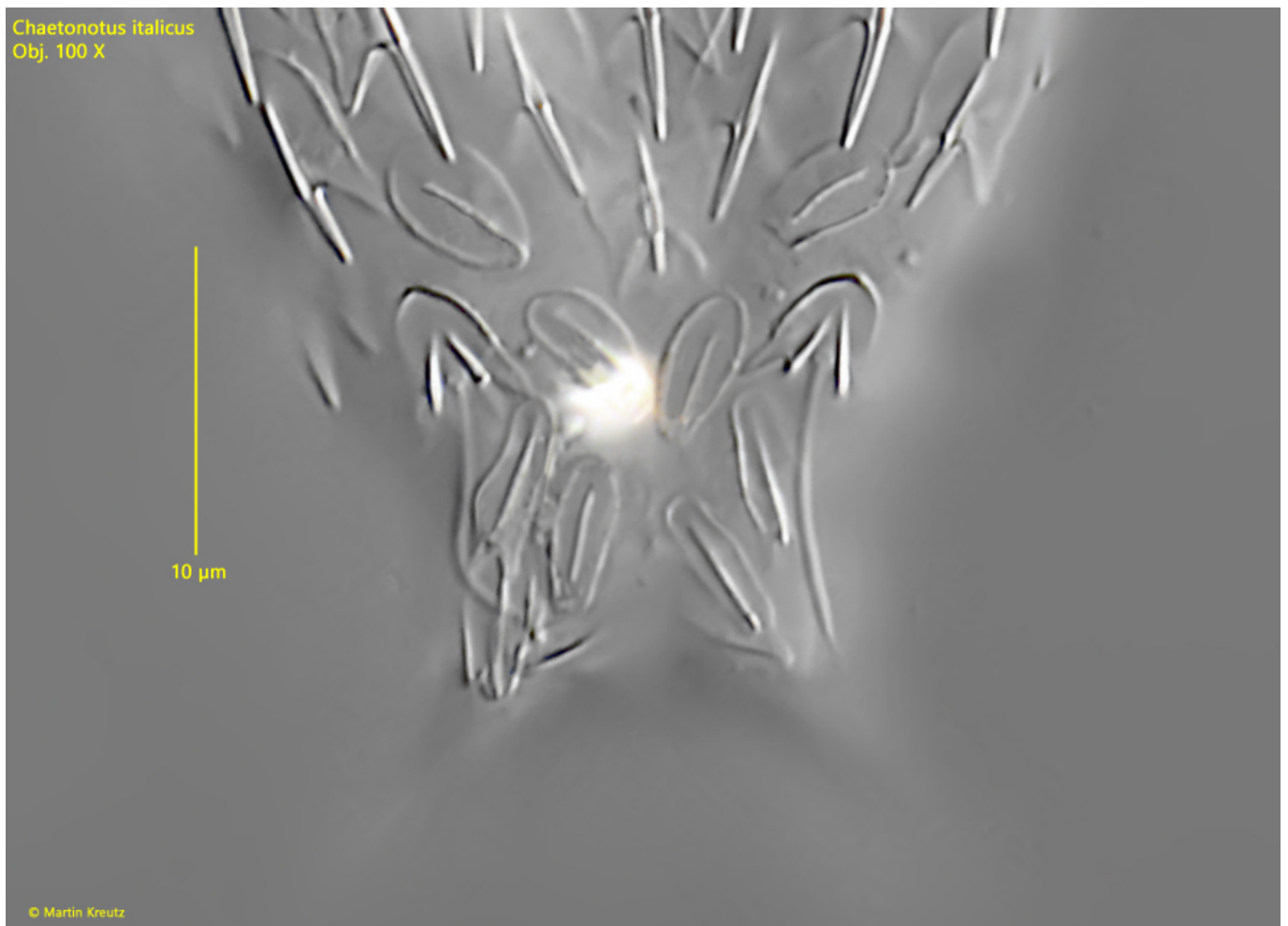
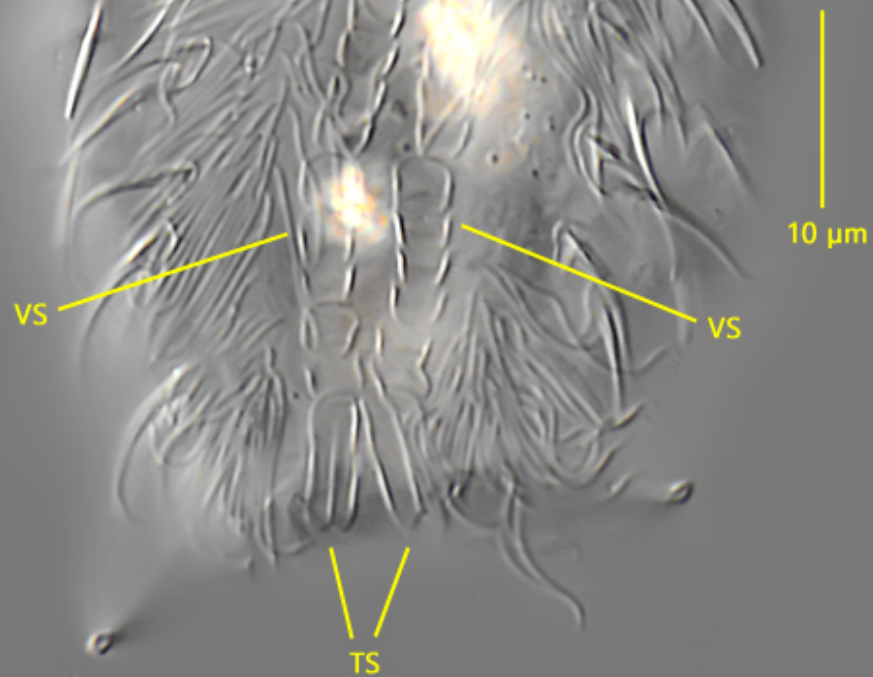


Fig. 5: *Chaetonotus italicus*. The arrangement of the dorsal scales near the base of the furca. Obj. 100 X.

Chaetonotus italicus
Obj. 100 X



© Martin Kreutz

Fig. 6: *Chaetonotus italicus*. Focal plane on the ventral scales from the dorsal side. Note the two rows of rectangular ventral scales (VS) and the two keeled terminal scales (TS). Obj. 100 X.