

***Cosmarium dickii* Coesel, 1989**

Most likely ID: n.a.

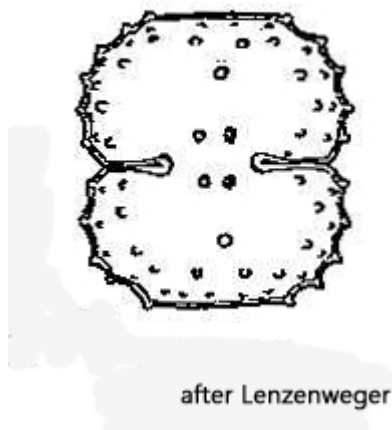
Synonyms: *Cosmarium blyttii* f. *bipunctatum*, *Cosmarium blyttii* var. *bipunctatum*, *Cosmarium blyttii* var. *bipunctatum*

Sampling location: [Simmelried](#)

Phylogenetic tree: [Cosmarium dickii](#)

Diagnosis:

- semi-cells rounded rectangular
- length 20–24 µm, width 19–23 µm
- apices flat with weak undulations
- lateral margins with undulations
- intramarginal with 2 rows of small granules
- a pair of distinct granules at base of each semi-cell
- one pyrenoid per semi-cell
- sinus deep and narrow, dilated at outside
- isthmus 6–7 µm wide



Cosmarium dickii

Cosmarium dickii is a small, inconspicuous species that I have only found in the [Simmelried](#)

so far. Its most important distinguishing features are its almost rectangular semi-cells with undulated margins and a pair of warts at the base of each semi-cell (s. fig. 1 b).

The similar species *Cosmarium didymochondrum* also has undulated margins and a pair of warts at the base of the semi-cells, but this species is about twice as large (41-50 μm) and the semi-cells are approximately semicircular.

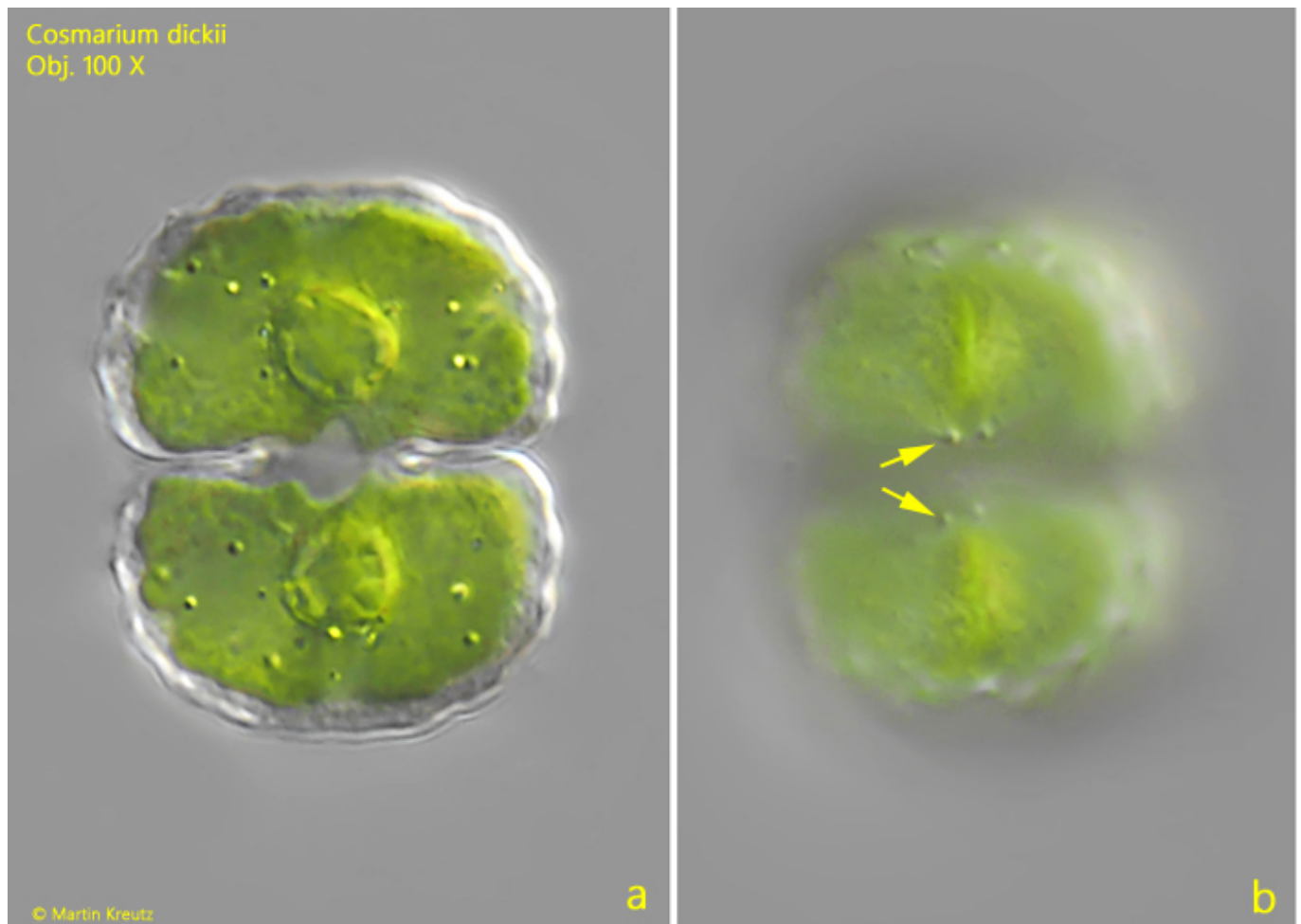


Fig. 1 a-b: *Cosmarium dickii*. L = 26 μm . Two focal planes of a slightly squashed specimen. Note the pair of granules at the base of the semi-cells (arrows). Obj. 100 X.