

## ***Cosmarium vogesiacum* Lemaire, 1883**

**Most likely ID:** n.a.

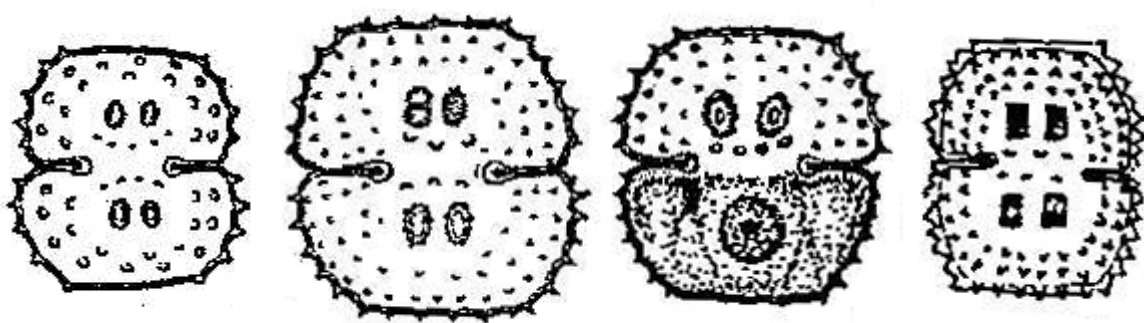
**Synonym:** n.a.

**Sampling location:** [Simmelried](#)

**Phylogenetic tree:** [Cosmarium vogesiacum](#)

### **Diagnosis:**

- semi-cell trapezoidal with flattened apex
- length 19–23  $\mu\text{m}$ , width 18–22  $\mu\text{m}$
- sinus narrow, dilated to the margin
- lateral margins of semi-cells with 5–7 granules
- parallel to margin von semi-cells 2–3 rows of granules
- in the center of the semi-cells 2 elliptical warts
- parallel to sinus two rows of granaules
- one pyrenoid per semi-cell

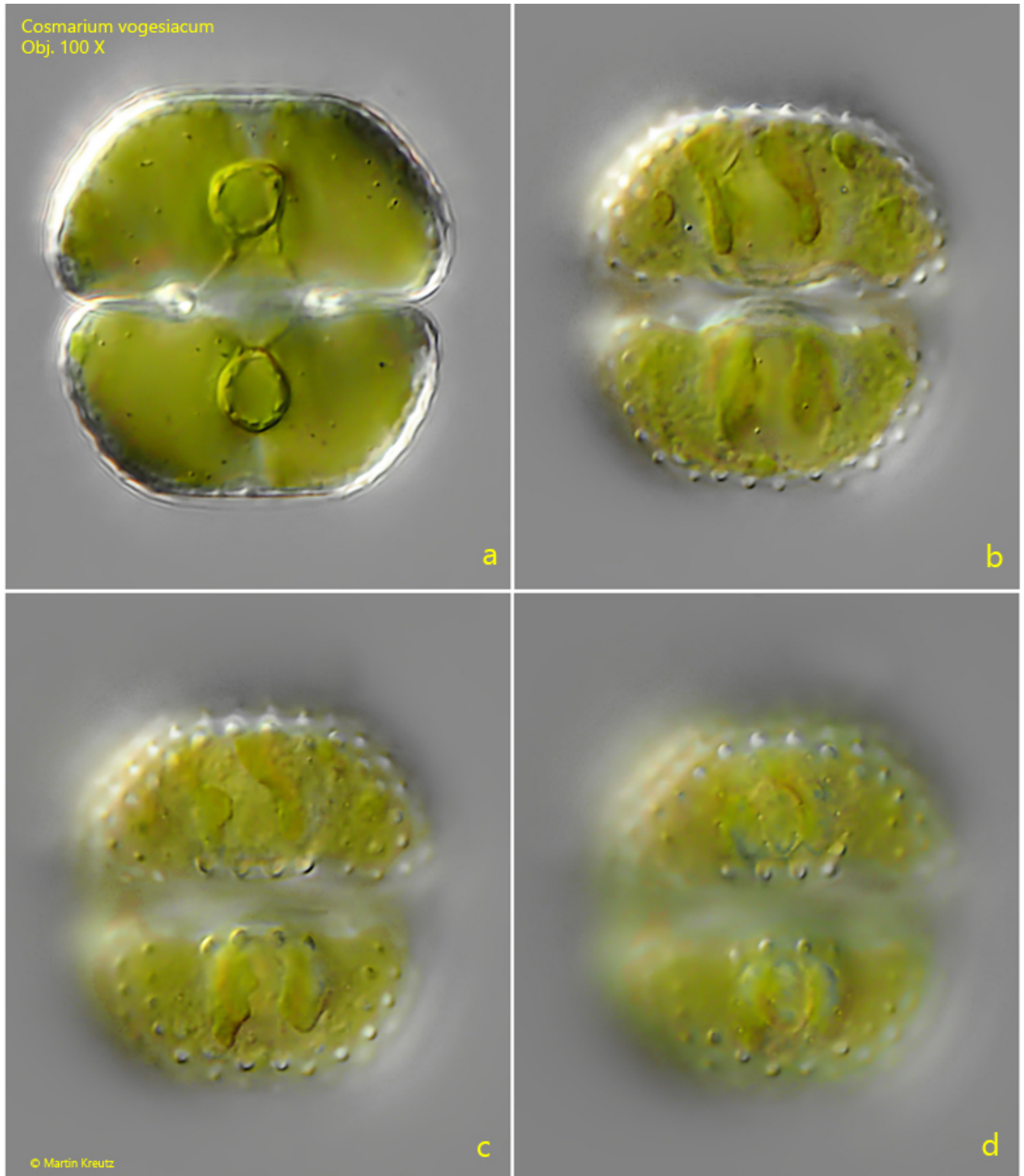


after Lenzenweger

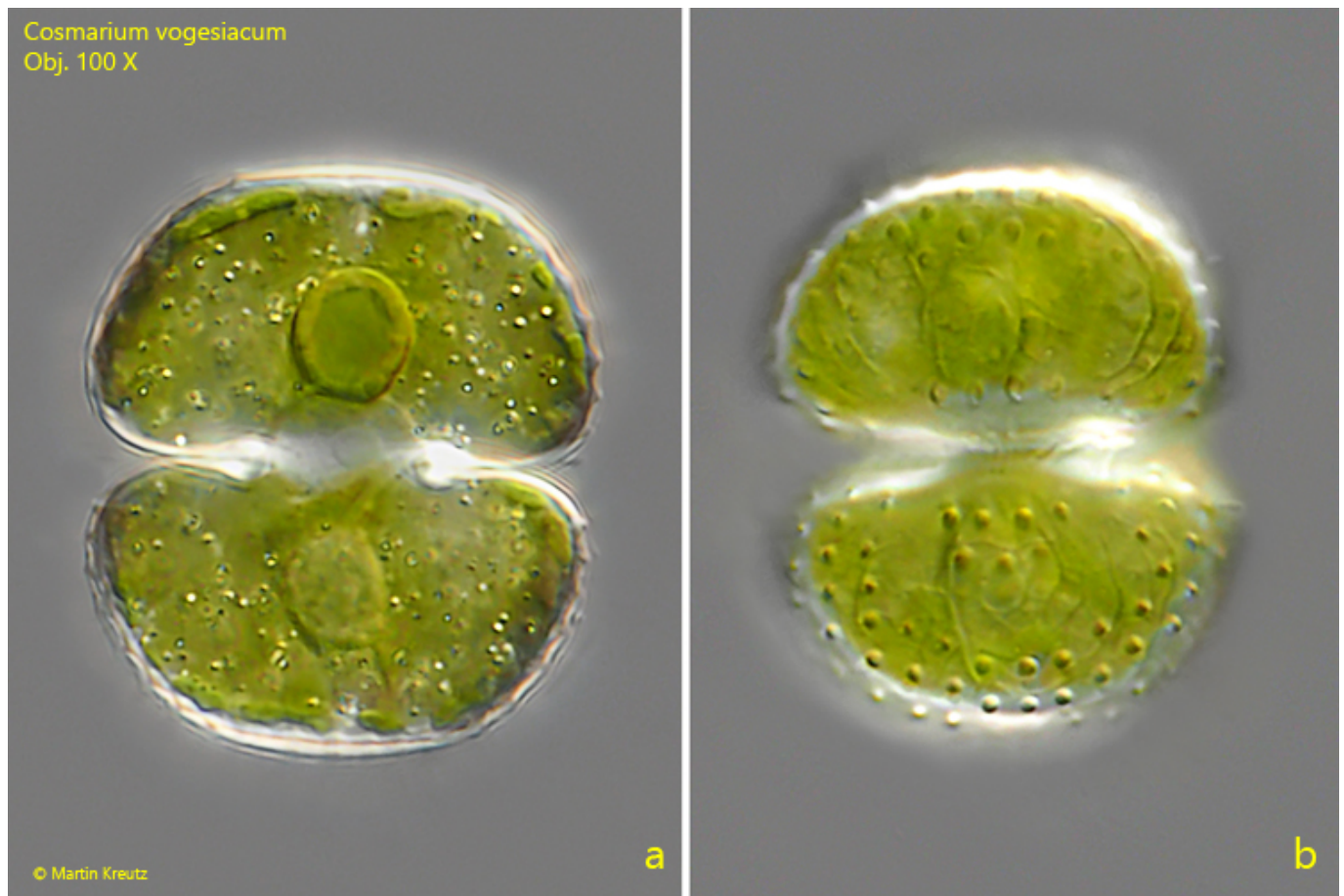
*Cosmarium vogesiacum*

So far I have only found *Cosmarium vogesiacum* in the [Simmelried](#). However, I have only been able to find it there in the last 2 years. I cannot rule out the possibility that *Cosmarium vogesiacum* was already present before, but then only sporadically at most. In the meantime, the species has become very stubborn and I mainly find it in a shallow siltation zone. The specimens shown below are from July and

September 2023.



**Fig. 1 a-d:** *Cosmarium vogesiacum*. L = 32  $\mu$ m. Different focal planes of a slightly squashed specimen. Obj. 100 X.



**Fig. 2 a-b:** *Cosmarium vogesiacum*. L = 33  $\mu$ m. A second, slightly squashed specimen. Obj. 100 X.