

## ***Cyclidium centrale* Kahl, 1931**

**Most likely ID:** n.a.

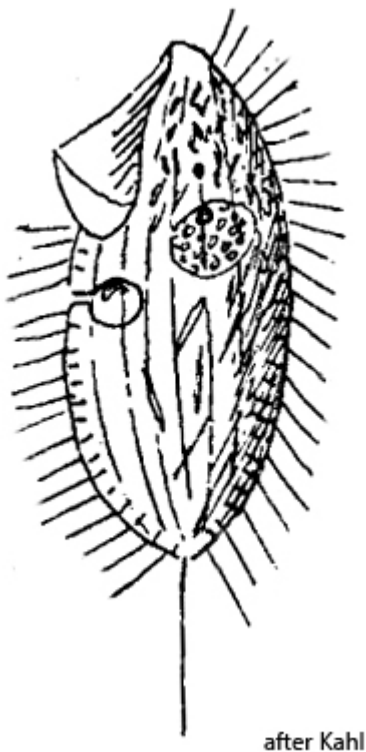
**Synonym:** n.a.

**Sampling location:** [Ulmisried](#), [Simmelried](#)

**Phylogenetic tree:** [Cyclidium centrale](#)

### **Diagnosis:**

- body slender ovoid, slightly flattened
- distinct frontal plate
- length commonly 40 µm, sometimes up to 60 µm
- oral apparatus third body length
- about 6 longitudinal rows of cilia
- contractile vacuole central
- extrusomes present
- one caudal cilium, often bent



### Cyclidium centrale

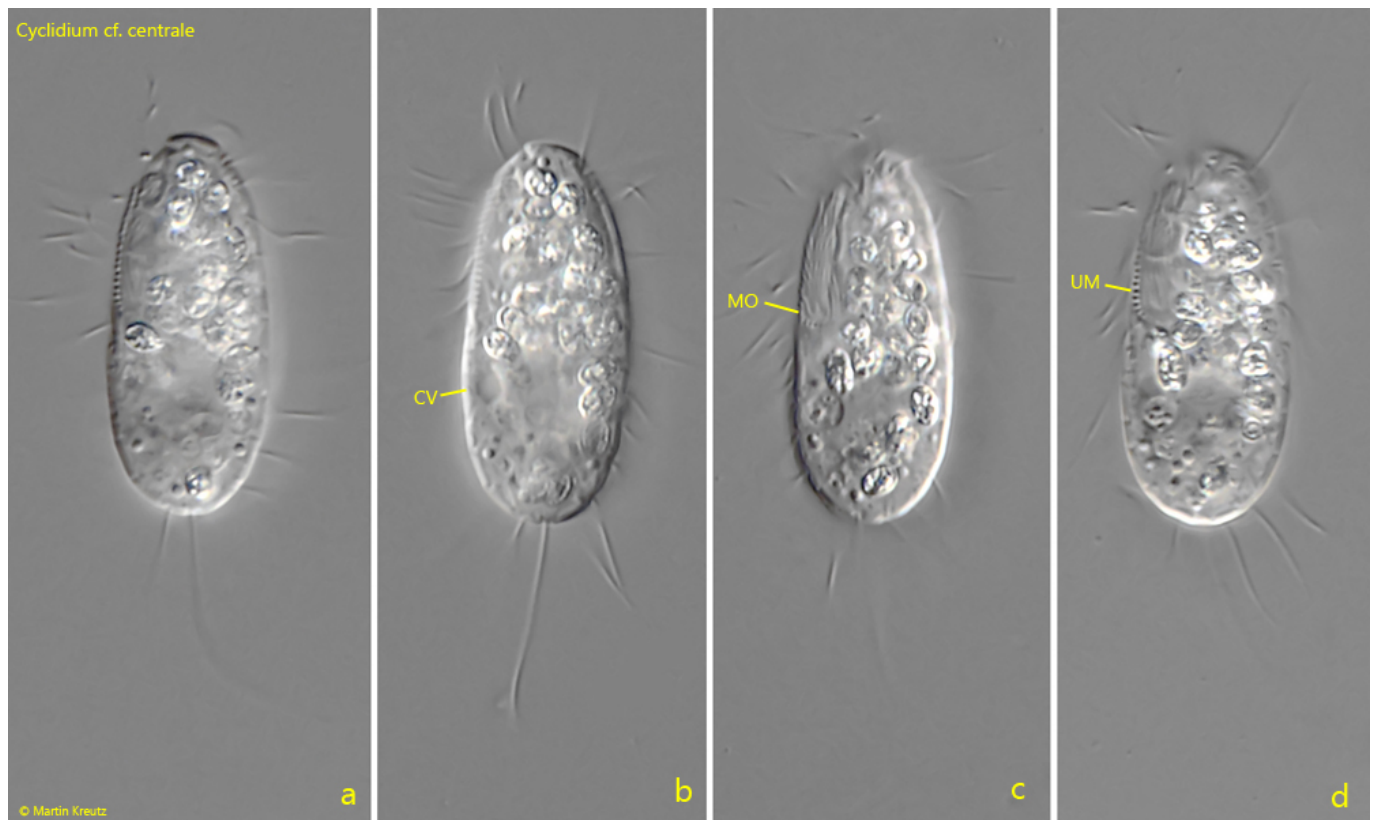
Only a very brief description and a drawing of *Cyclidium centrale* are available from Kahl (1931). I have not found any further reports on this species. In November 2017, I found a *Cyclidium* species in the [Ulmisried](#) that essentially exhibits all the characteristics of *Cyclidium centrale*. These are particularly the contractile vacuole in the middle of the body, a peristome that takes up about one-third of the body length, and a length of about 40  $\mu\text{m}$  (s. fig. 1 a-b). All these features are fulfilled by the specimen, of which I unfortunately only took a few photos.

In May 2024, I then found another specimen in the [Simmelried](#), which, however, was significantly smaller at 27  $\mu\text{m}$  in length. Furthermore, in this specimen, the peristome extended almost to the middle of the body. The contractile vacuole was located slightly below the cell equator. Therefore, I present this specimen here as *Cyclidium* cf. *centrale* (s. fig. 2 a-d).

Within the genus *Cyclidium* and the similar genus *Cristigera*, there are very few species with a contractile vacuole in the middle of the body, so the selection of alternative species is very small. *Cyclidium muscicola* is significantly smaller at 20  $\mu\text{m}$  and has a stocky body. *Cyclidium fusiformis* is about 30  $\mu\text{m}$  long and the posterior third of the body is distinctly tapered.



**Fig. 1 a-b:** *Cyclidium centrale*. L = 41  $\mu\text{m}$ . Two focal planes of a specimen found in November 2017 in the [Ulmisried](#). Note the centrally located contractile vacuole (CV) and the oral apparatus (OA) in the anterior third. CC = caudal cilium, EX = extrusome, FP = front plate. Obj. 100 X.



**Fig. 2 a-d:** *Cyclidium* cf. *centrale*. L = 27  $\mu$ m. A specimen found in May 2024 in the [Simmelried](#). The mouth opening (MO) is located near mid-body and the contractile vacuole (CV) is below the cell equator. UM = undulating membrane. Obj. 100 X.