

Cyphoderia ampulla

(Ehrenberg, 1840) Leidy, 1879

Most likely ID: n.a.

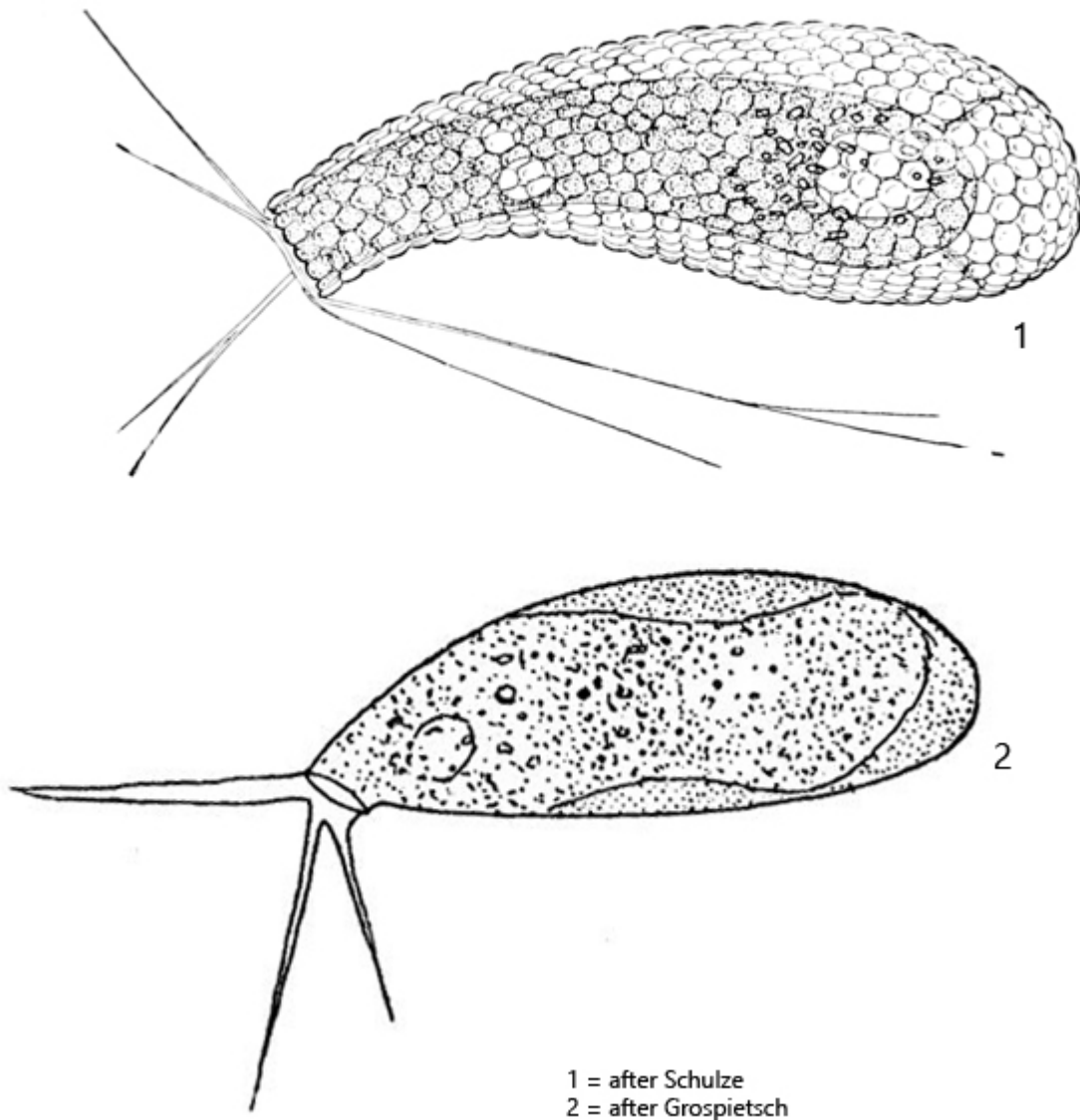
Synonym: *Cyphoderia margaritacea*

Sampling location: [Paradieswiesen \(Austria\)](#), [Simmelried](#)

Phylogenetic tree: [Cyphoderia ampulla](#)

Diagnosis:

- chitinous test retort shaped, covered with disc-shaped scales
- siliceous scales 1.9-2.3 µm in diameter
- test colorless, brownish or yellowish
- neck gently recurved
- length 89-124 µm
- pseudostome round, surrounded by teeth-shaped scales
- nucleus large, located posterior
- filopodia, straight, thin, threadlike



Cyphoderia ampulla

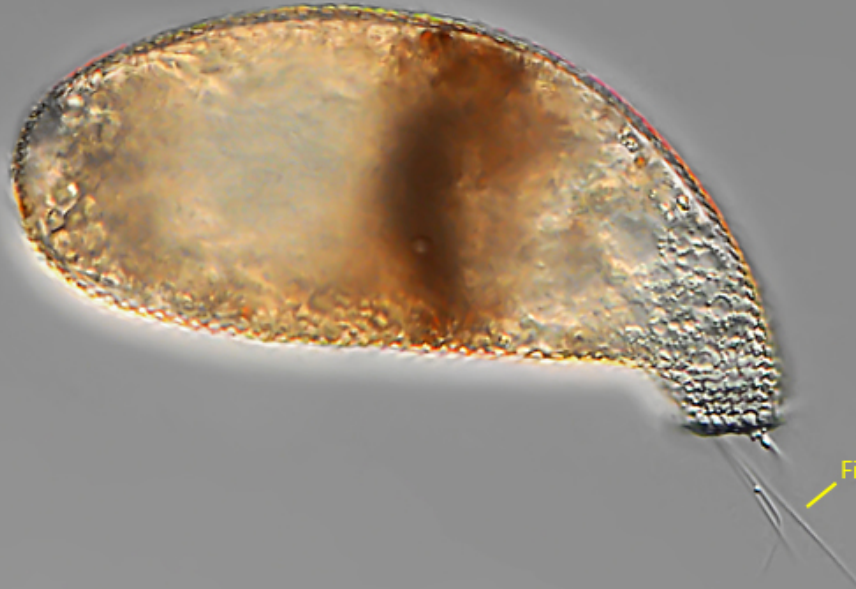
So far I have only found *Cyphoderia ampulle* in the [Simmelried](#) and in the [Paradieswiesen](#). In the [Simmelried](#), however, the species only occurs very rarely and sporadically.

This testate amoeba is easily recognizable by its characteristic, retort-shaped test and is easy to identify. The test of the similar species *Cyphoderia calceolus* is clearly pointed at the posterior end and not broadly rounded.

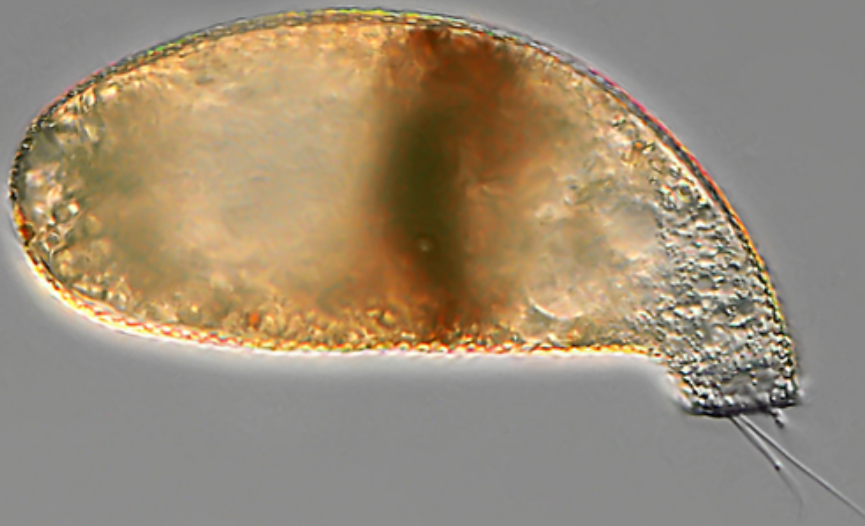
The test of *Cyphoderia ampulla* consists of a thin, organic layer on which the round, silica scales are arranged very regularly. They are embedded in a mostly brownish, organic matrix. The size of the round scales on the test varies. They are largest in the middle of the test. In my specimens, they had a diameter of about 4 µm in the middle of the test and were

circular (s. fig. 3).

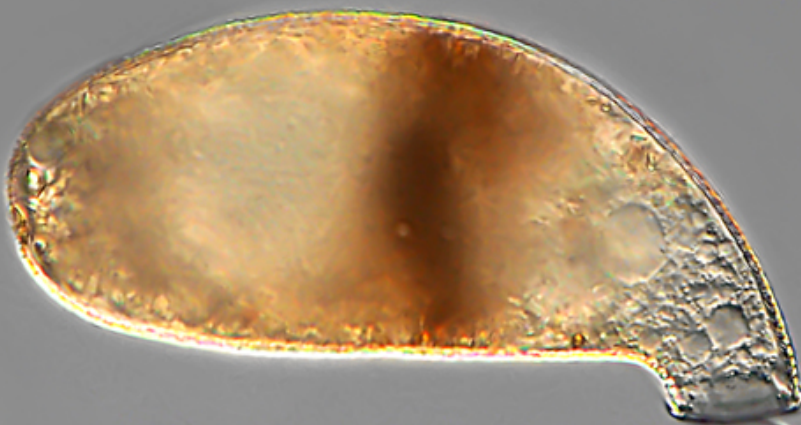
Cyphoderia ampulla
Obj. 40 X



a



b



c

© Martin Kreutz

Fig. 1 a-c: *Cyphoderia ampulla*. L = 129 μ m. Three focal planes of a specimen found in June 2024 in the [Paradieswiesen](#). Note the thin, threadlike filopodia (Fi). Obj. 40 X.

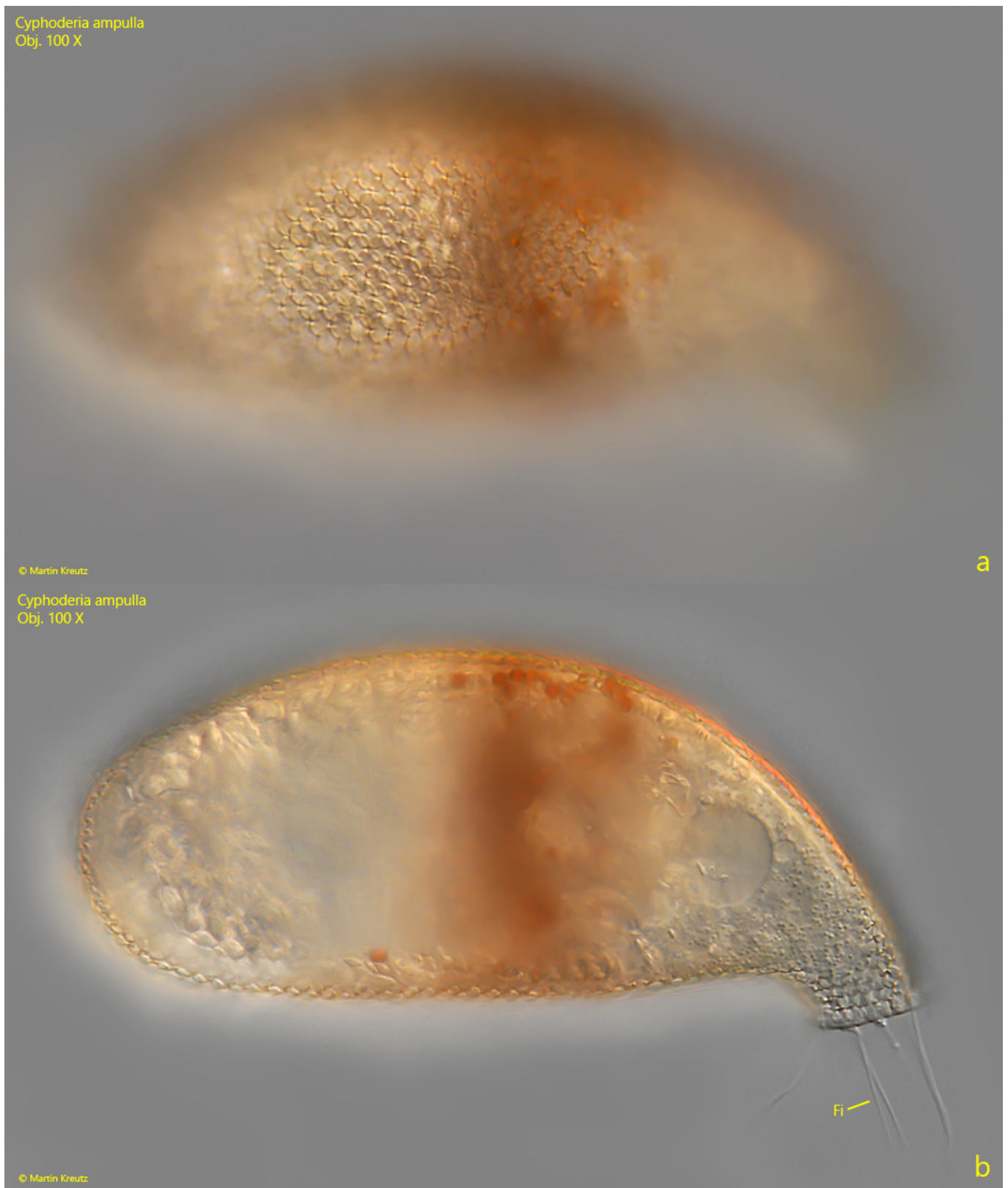




Fig. 2 a-c: *Cyphoderia ampulla*. L = 129 μm . The same specimen as shown in fig. 1 a-c in detail. Fi = filopodia. Obj. 100 X.

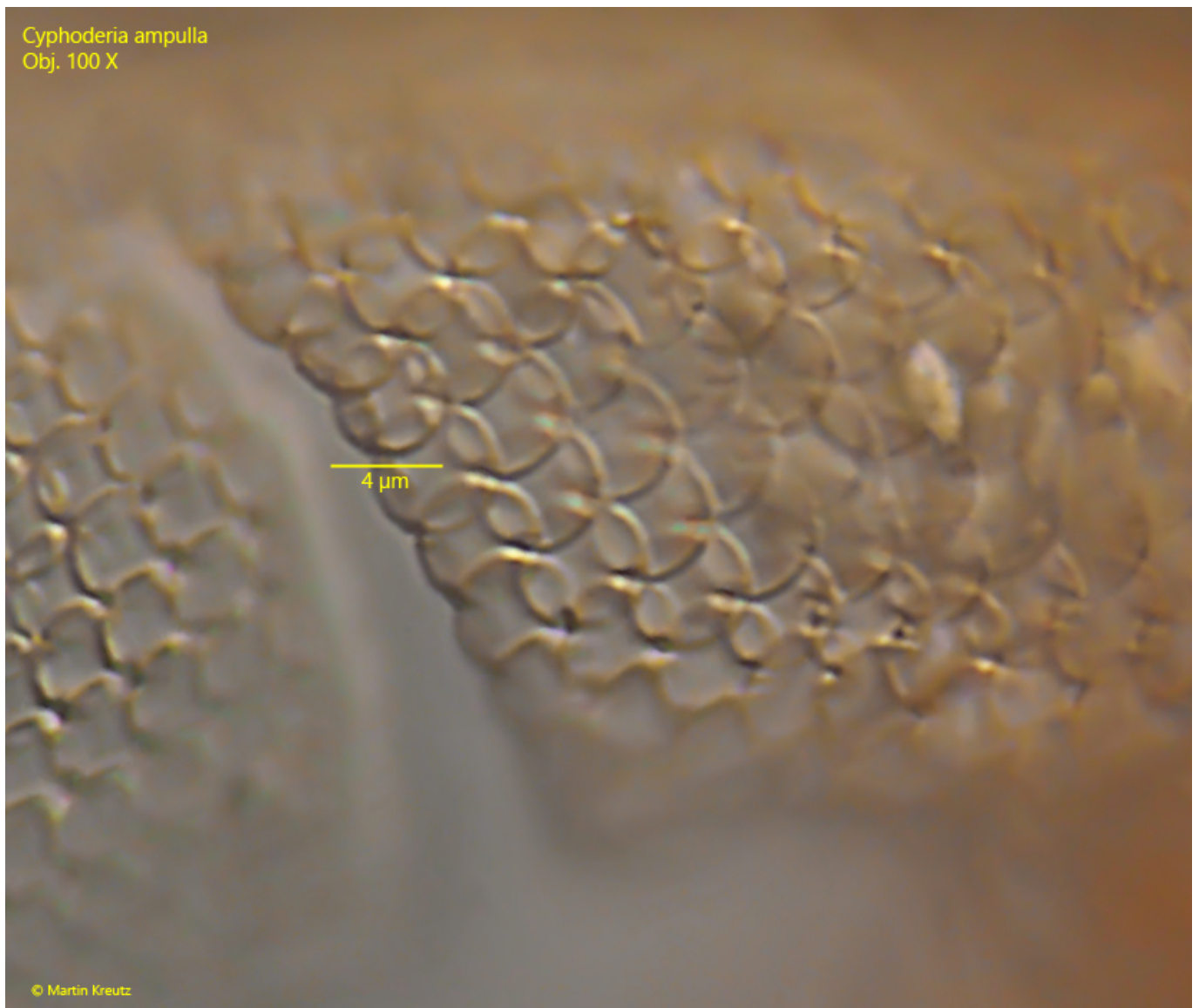


Fig. 3: *Cyphoderia ampulla*. The circular scales in detail. In mid-body they have a diameter of approximately 4 µm. Obj. 100 X.