

***Ditrema mikrous* De Saedeleer, 1934**

Most likely ID: n.a.

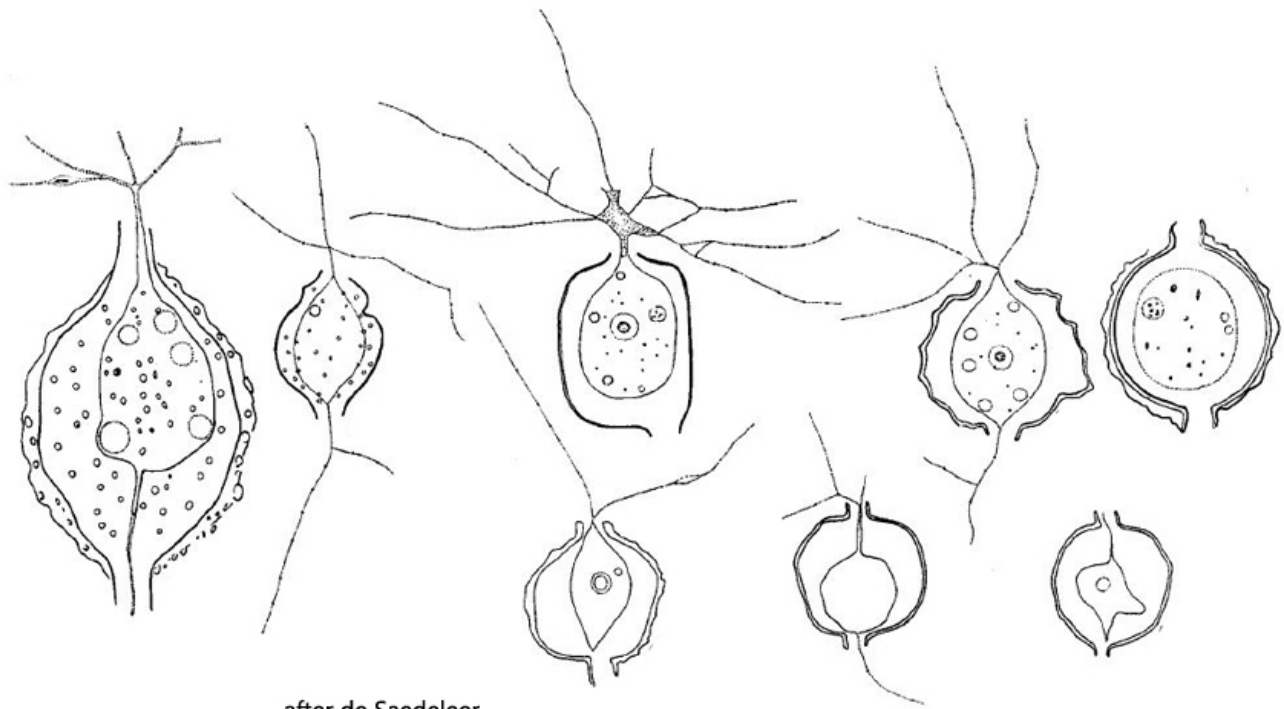
Synonym: n. a.

Sampling location: [Simmelried](#)

Phylogenetic tree: n.a.

Diagnosis:

- shell hyaline, thin, without xenosomes, sometimes covered with brownish crust
- in frontal view spherical or oval, sometimes irregular or angular
- in lateral view dome-shaped
- shell with two opposite necks
- length of shell (including necks) 9.3–13.6 μm
- diameter of necks 1.7–2 μm
- protoplast fills shell not completely
- granulofilopodia form a dichotomously branched and anastomosing network
- nucleus central, with a single nucleolus
- several contractile vacuoles



after de Saedeleer

Ditrema mikrous

So far I could detect *Ditrema mikrous* only in the [Simmelried](#). Like the similar species [Ditrema longicollis](#), *Ditrema mikrous* likes to settle on [floating coverslips](#). I could observe both species in parallel on the same coverslips. The main distinguishing feature from [Ditrema longicollis](#) is the size. According to De Saedeleer, 1934 (s. [literature](#)) *Ditrema mikrous* with 9.3–13.6 µm length (including the necks) is only half the size of [Ditrema longicollis](#). I can confirm these size differences. In my population the length of the specimens was 12.3–13.9 µm which agrees well with the data of De Saedeleer. I could also observe that the shells of some specimens were covered with a brownish crust (s. fig. 4). This was different from the orange-brown or brown coloration caused by iron deposits that occur in [Ditrema longicollis](#). Since I have not find any *Ditrema* shells with a length of 14–23 µm (i.e., the gap between the size range of *Ditrema mikrous* and [Ditrema longicollis](#)), *Ditrema mikrous* cannot be a smaller variant of [Ditrema longicollis](#), confirming De Saedeleer's delimitation.

More images and information of *Ditrema mikrous*: [Ferry Siemensma-Microworld-Ditrema mikrous](#)

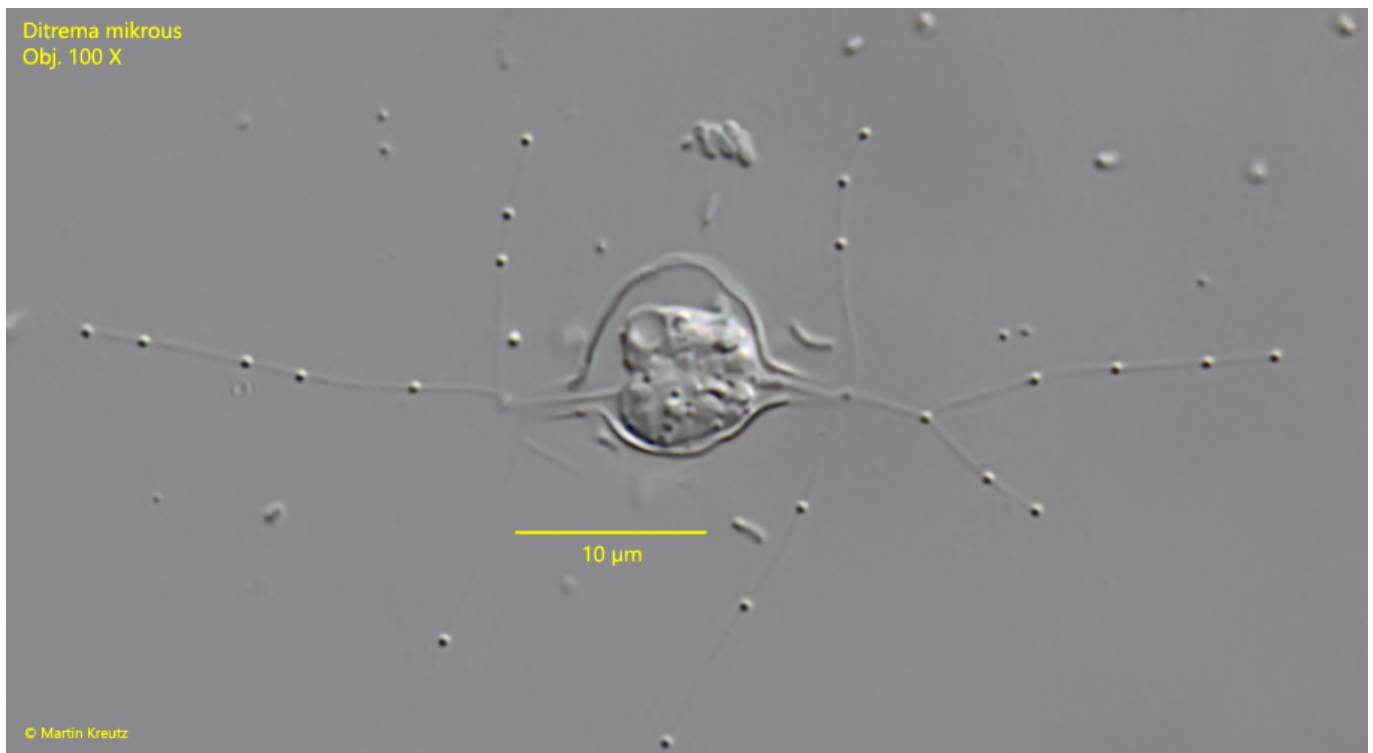


Fig. 1: *Ditrema mikrous*. L = 13.9 µm (including necks). A partly extended specimen with an irregularly shaped shell. Obj. 100 X.

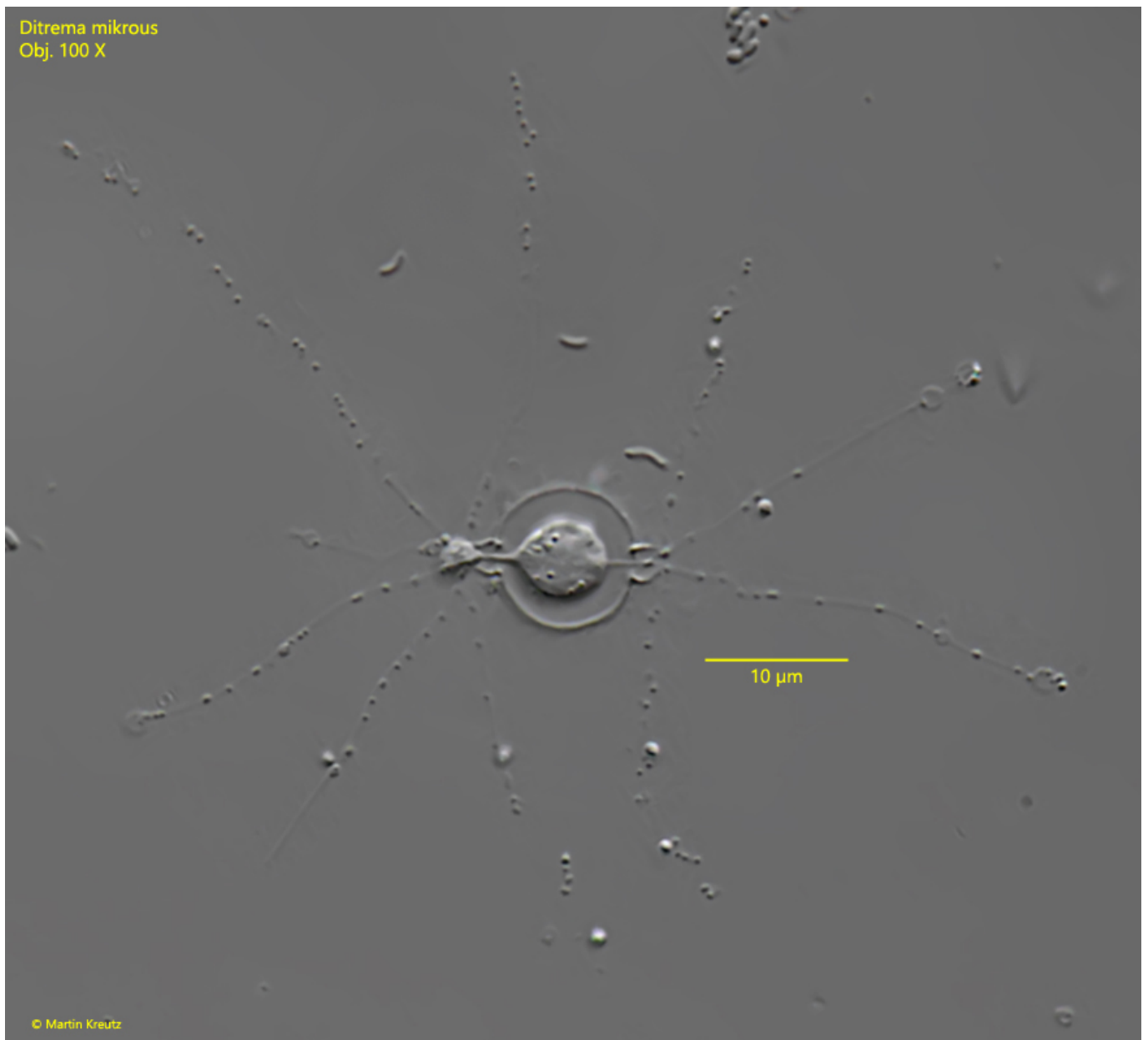


Fig. 2: *Ditrema mikrous*. L = 12.2 μ m (including necks). A partly extended specimen with a spherical, hyaline shell. Obj. 100 X.

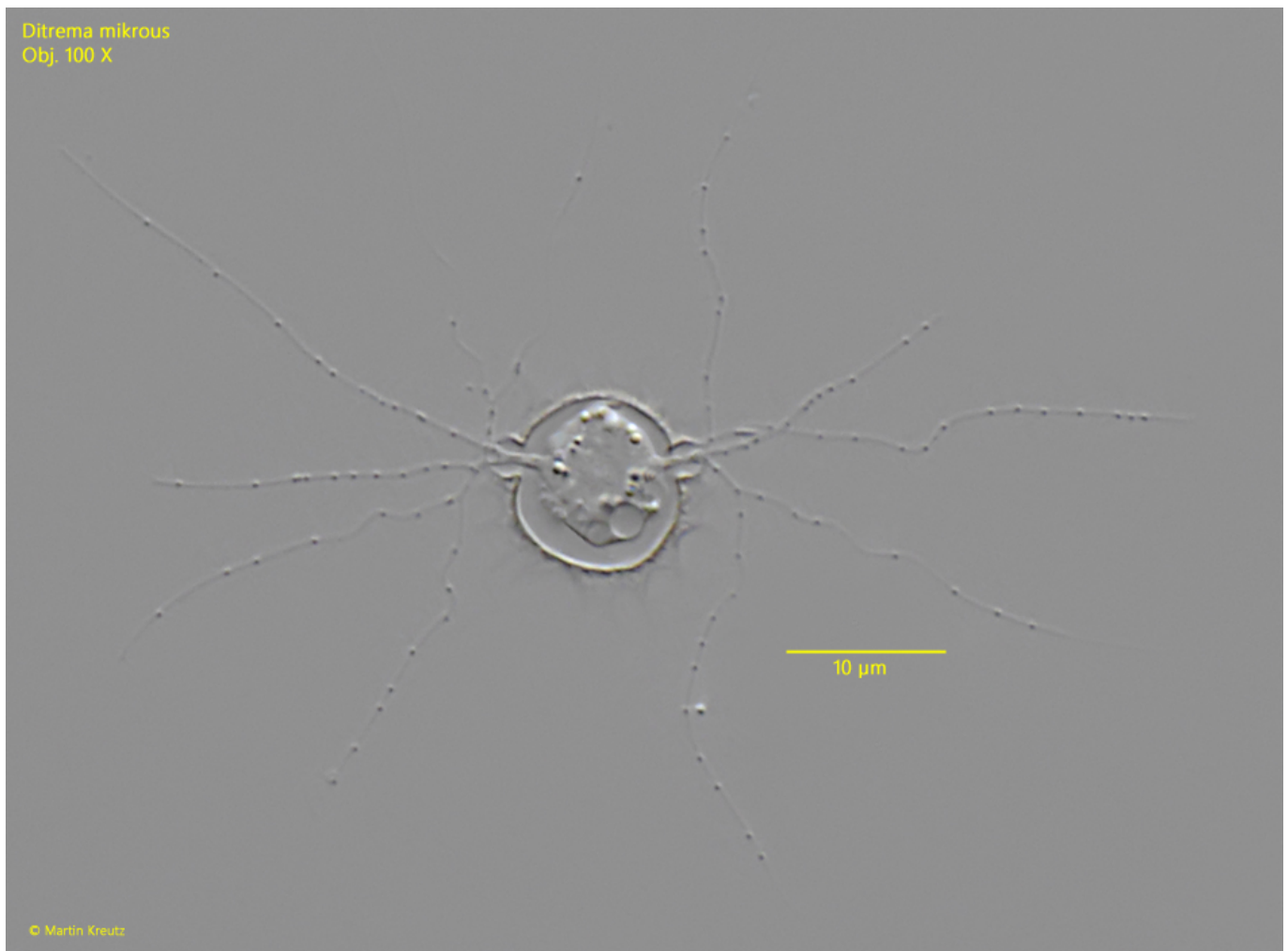


Fig. 3: *Ditrema mikrous*. L = 12.0 μm (including necks). A fully extended specimen with a slightly brownish shell. Obj. 100 X.

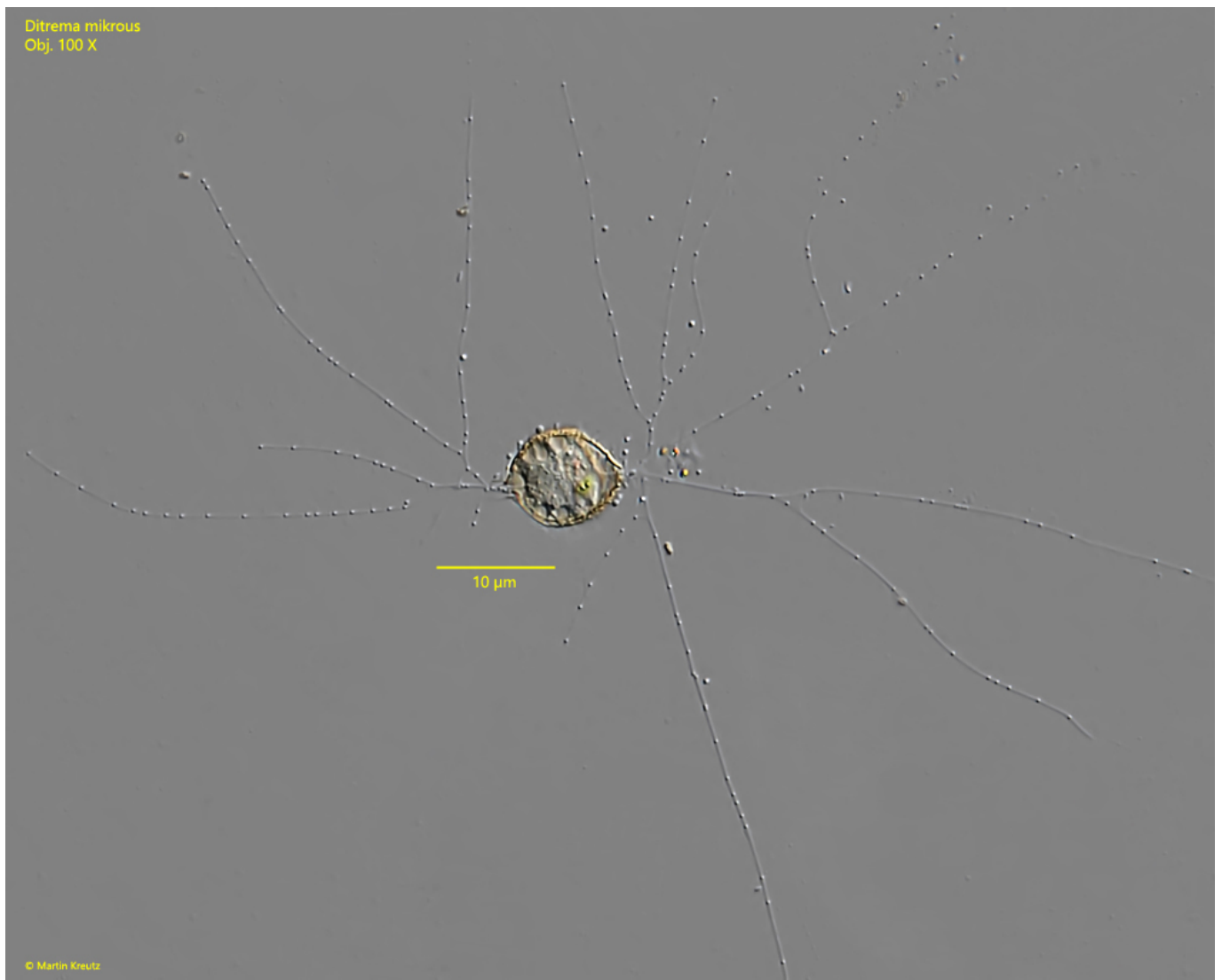


Fig. 4: *Ditrema mikrous*. L = 12.4 μm (including necks). A fully extended specimen with a broad oval shell covered with a brownish crust. Obj. 100 X.