

***Elosa woralli* Lord, 1891**

Most likely ID: n.a.

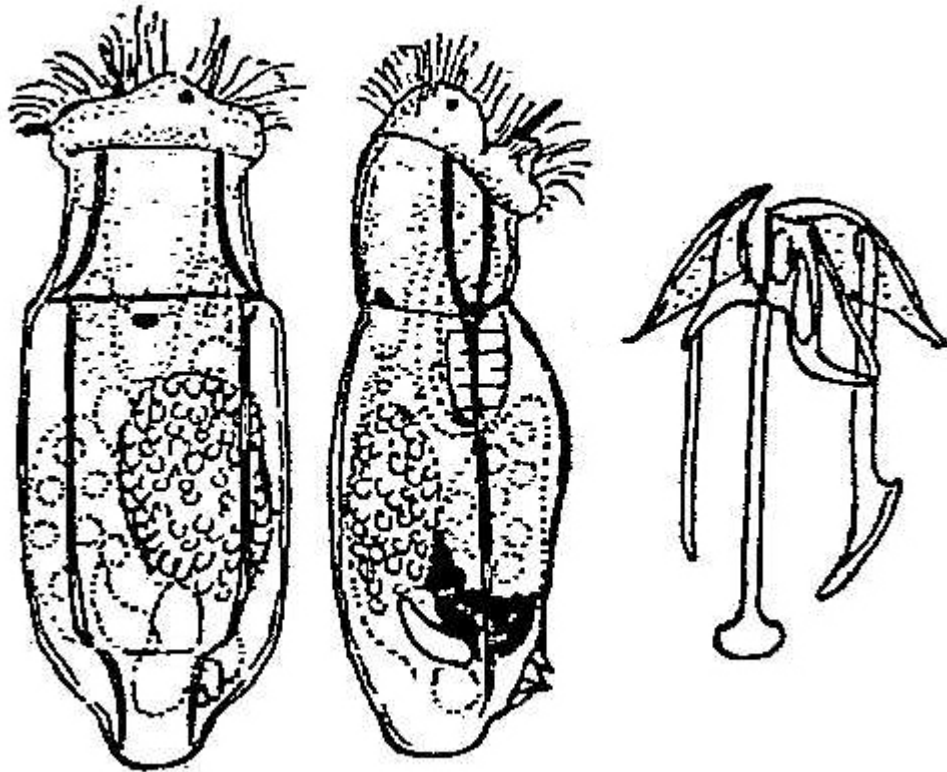
Synonym: *Elosa worralli*

Sampling location: [Simmelried](#)

Phylogenetic tree: [Elosa woralli](#)

Diagnosis:

- body elongate ovoid, dorso-ventrally slightly flattened
- posterior end rounded, foot absent
- apically 1 or 2 palps
- cuticle thin, transparent
- length 80–100 µm
- corona crescent-shaped
- bladder small
- dorsal side with 2 longitudinal folds
- one front eye shifted to right
- one cerebral eye shifted to left
- trophi asymmetrical



after Wulfert

Elosa woralli

Between April 2008 and July 2008 I found a few specimens of *Elosa woralli* in the [Simmelried](#). Before and after that I have no records of this species. I have never been able to find *Elosa woralli* in my other sampling sites. The species has only rarely been described and seems to be rare.

Elosa woralli is easy to identify as it has two eyespots, which are not arranged next to each other, but one below the other. The front eye is also slightly shifted to the right and the lower (cerebral) eye slightly to the left. Another special feature of *Elosa woralli* is that it has no foot and no toes.

More images and information on *Elosa woralli*: [Michael Plewka-Freshwater life-Elosa woralli](#)

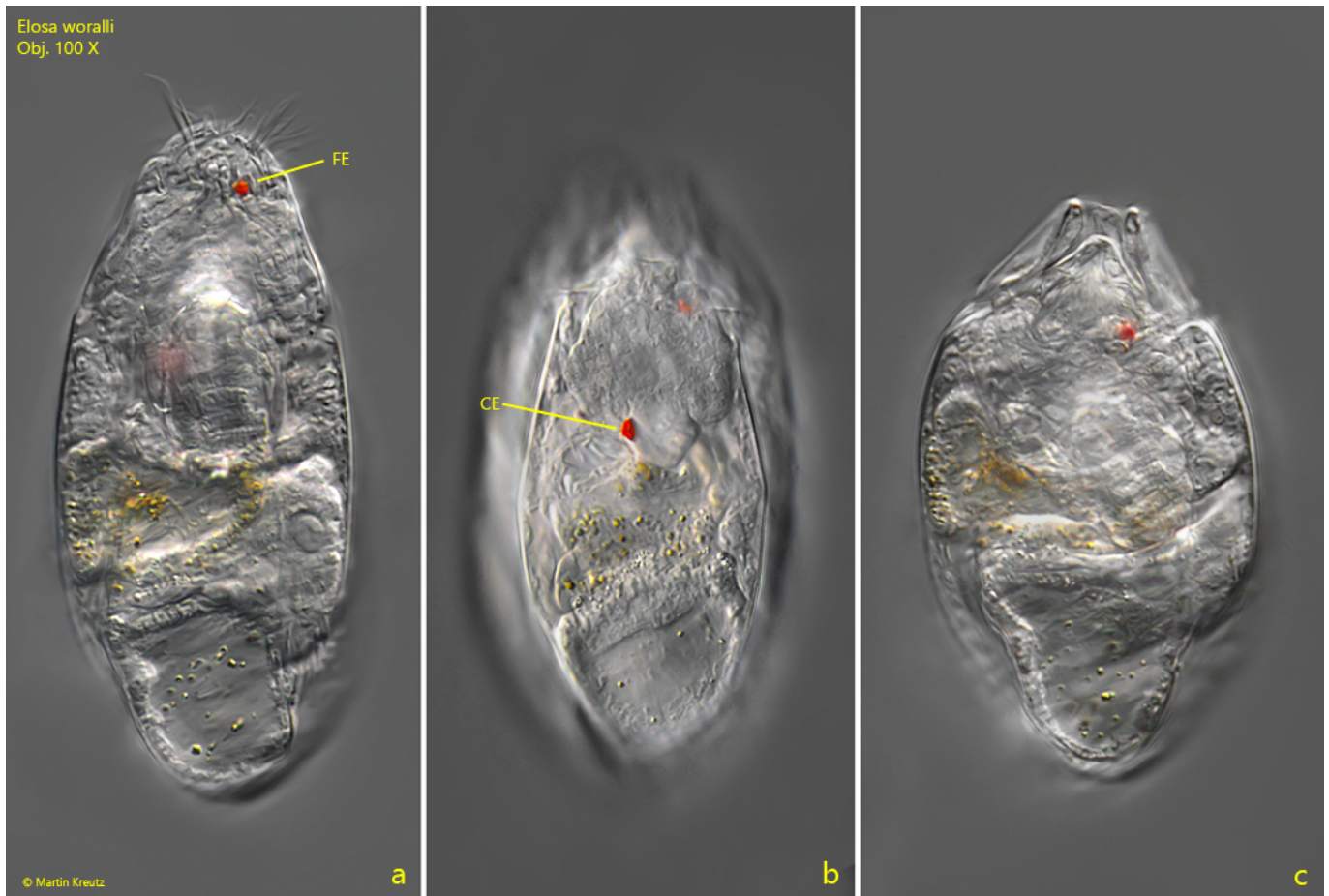
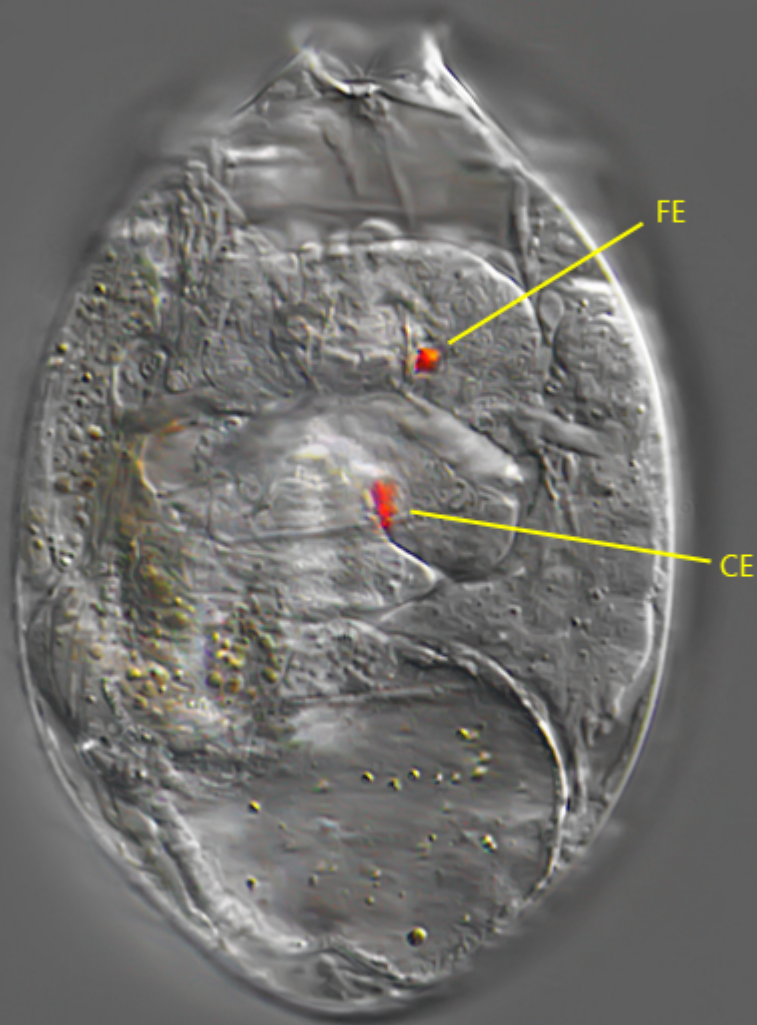


Fig. 1 a-c: *Elosa woralli*. L = 92 μ m. An elongated (a) and contracted specimen (c) from dorsal. Note the frontal eye (FE) slightly shifted to the right, while the cerebral eye (CE) is slightly shifted to the left. Obj. 100 X.

Elosa woralli
Obj. 100 X



© Martin Kreutz

Fig. 2: *Elosa woralli*. The squashed specimen as shown in fig. 1 a-c. FE = frontal eye, CE = cerebral eye. Obj. 100 X.

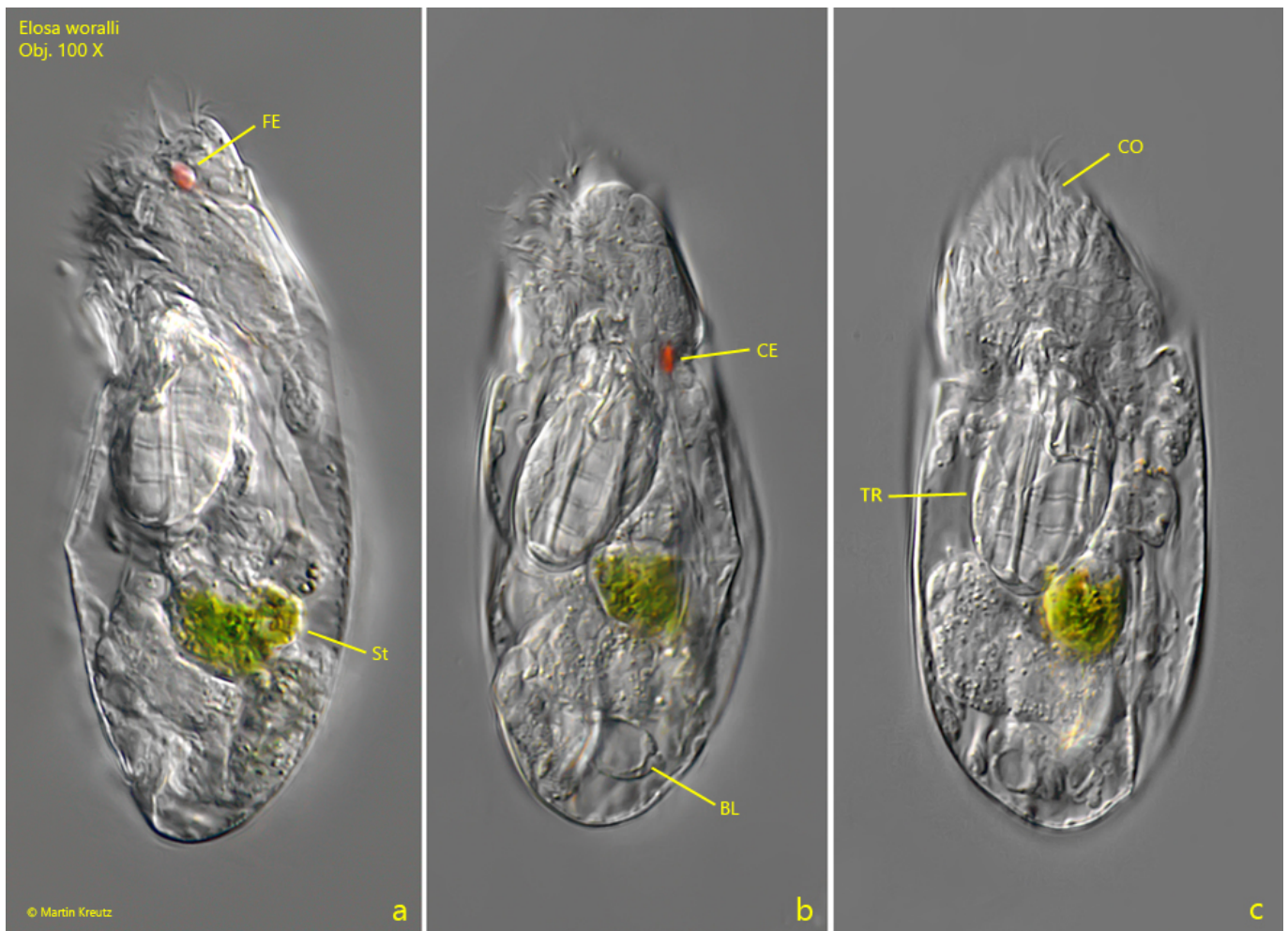


Fig. 3 a-c: *Elosa woralli*. L = 87 μ m. A second specimen from left (a, b) and from ventral (c). BL = bladder, CE = cerebral eye, CO = corona, FE = frontal eye (FE), St = stomach, TR = trophies. Obj. 100 X.

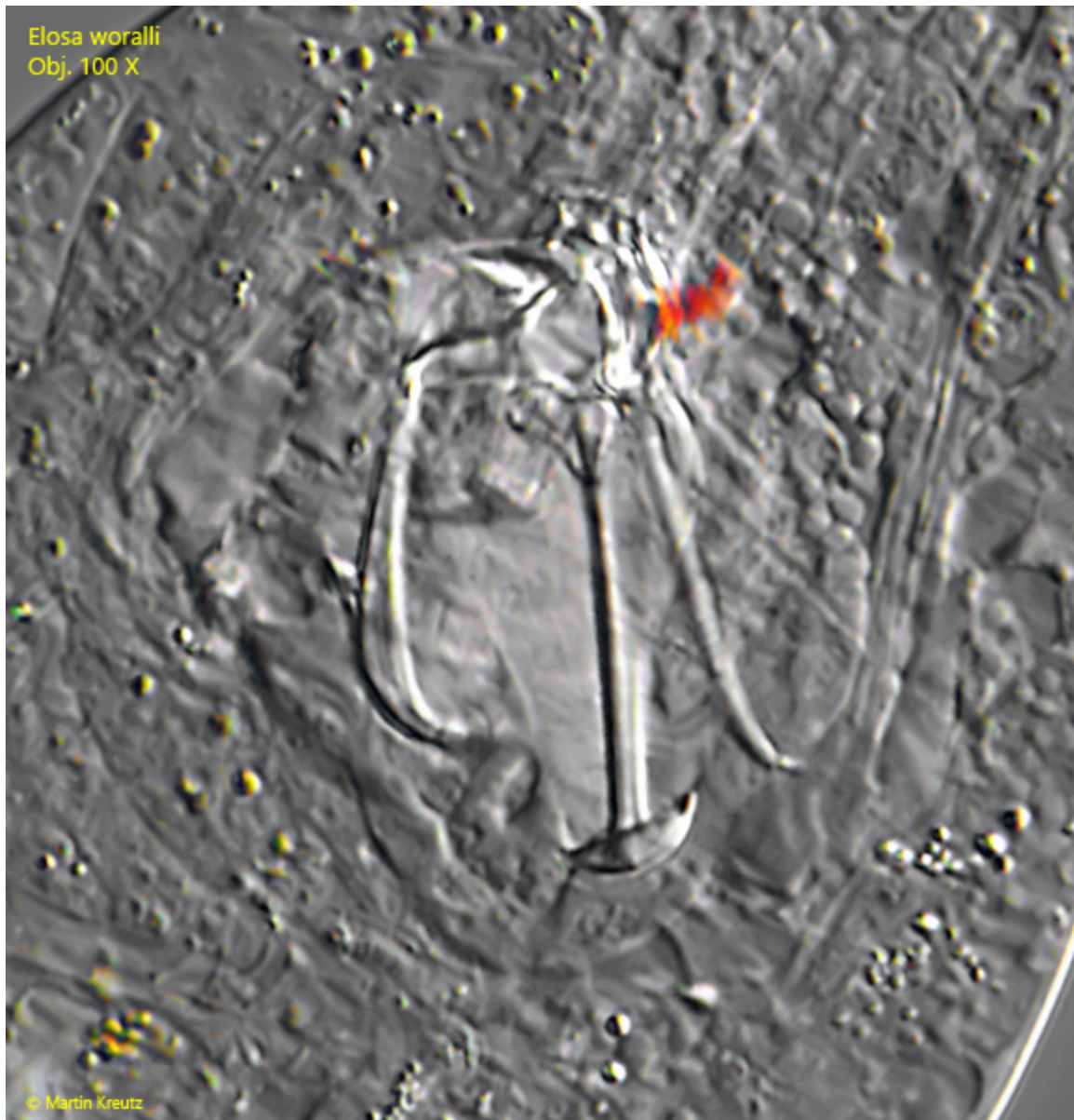


Fig. 4: *Elosa woralli*. The trophi in a strongly squashed specimen. Obj. 100 X.