

*Gloeotheca membranacea*

(Rabenhorst) Bornet, 1892

**Most likely ID:** n.a.

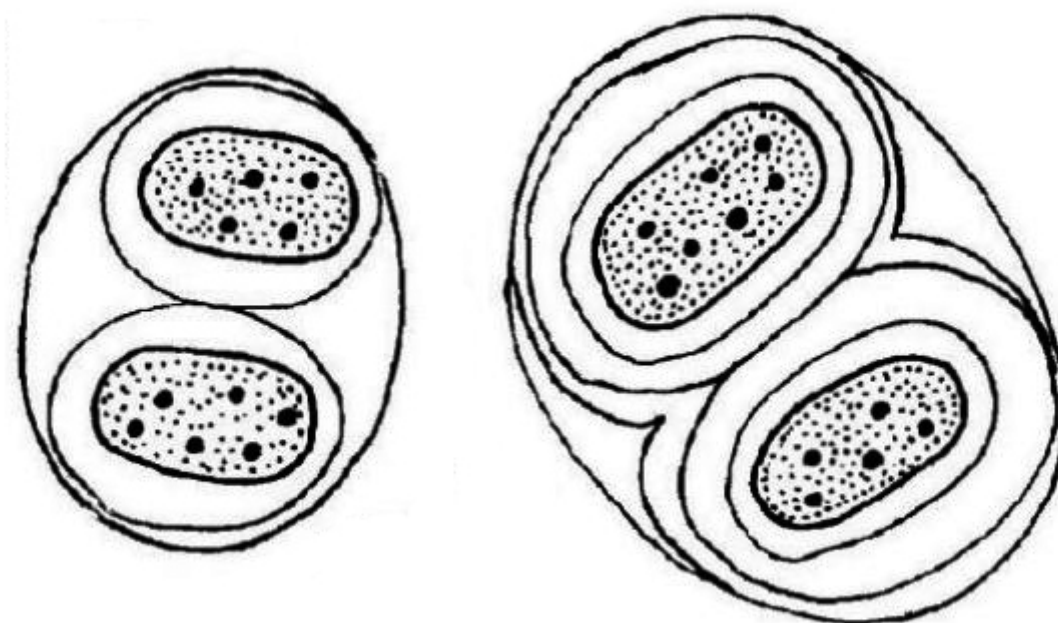
**Synonyms:** *Aphanocapsa membranacea*, *Aphanothece membranacea*

**Sampling location:** [Pond of the convent Hegne](#)

**Phylogenetic tree:** [Gloeotheca membranacea](#)

**Diagnosis:**

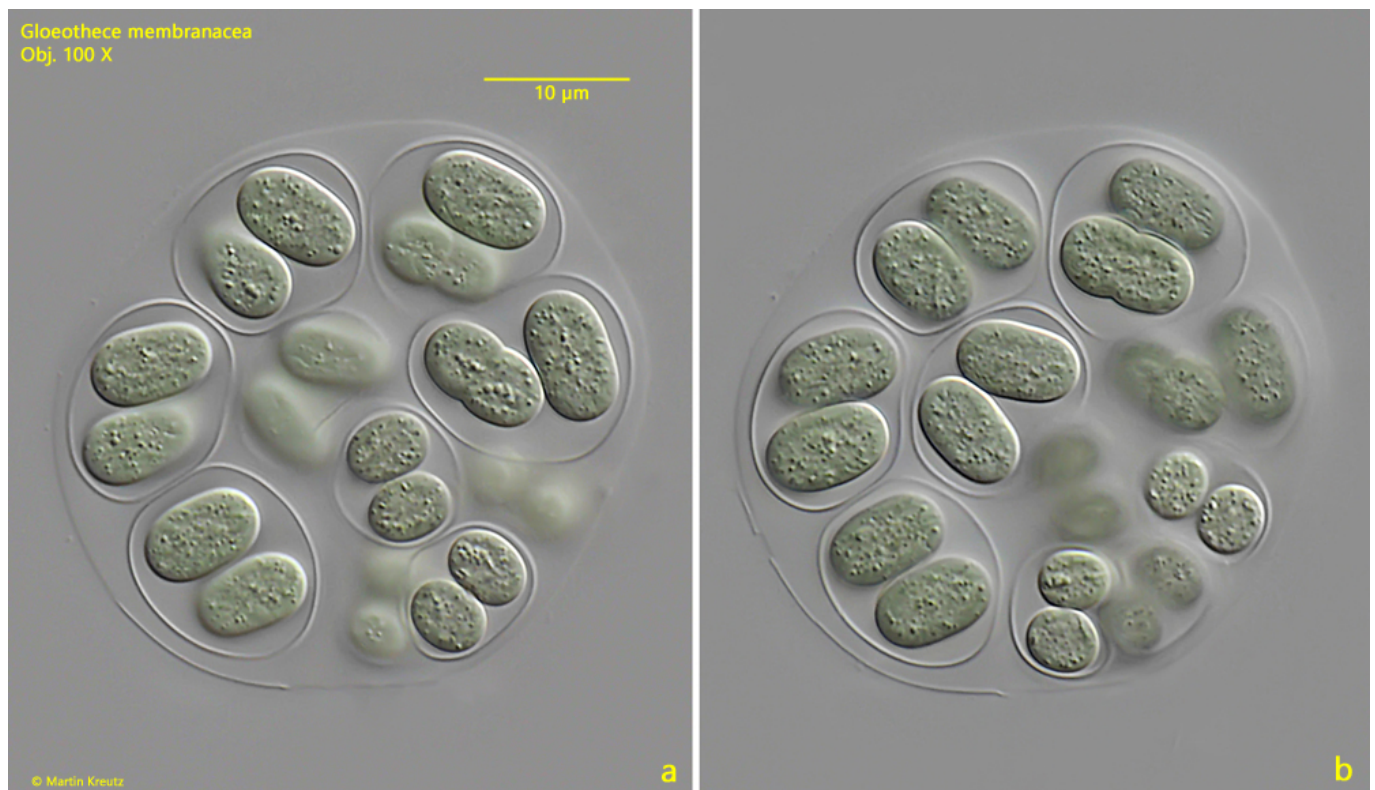
- colony spherical, irregular or rectangular
- colony surrounded by common mucilage, colorless or slightly pink
- cells surrounded by sharply defined mucus envelopes, concentrically layered
- cells ellipsoid or elongated oval, 7.5–9.9  $\mu\text{m}$  long 4.5–5.2  $\mu\text{m}$  broad
- cells colored blue-green or olive-green



after Patil & Basarkar

*Gloeotheca membranacea*

In October 2023, I found only very few colonies of *Gloeotheca membranacea* in the mud of the pond of the convent Hegne. The colonies are easily recognizable even at low magnifications due to the highly refractive gelatinous sheath. The cells of *Gloeotheca membranacea* are quite large for a cyanobacteria at around 10  $\mu\text{m}$  in length. Another striking feature is the sharply defined mucus envelope of the individual cells in the colony. This can also be multi-layered. In my population, the cells had a rather pale olive-green color.



**Fig. 1 a-b:** *Gloeotheca membranacea*. L = 10.4-11.2  $\mu\text{m}$  (of cells). Two focal planes of an almost spherical colony. Note the sharply defined mucus envelopes of the cells. Obj. 100 X.