

***Lepadella punctata* Wulfert, 1939**

Most likely ID: n.a.

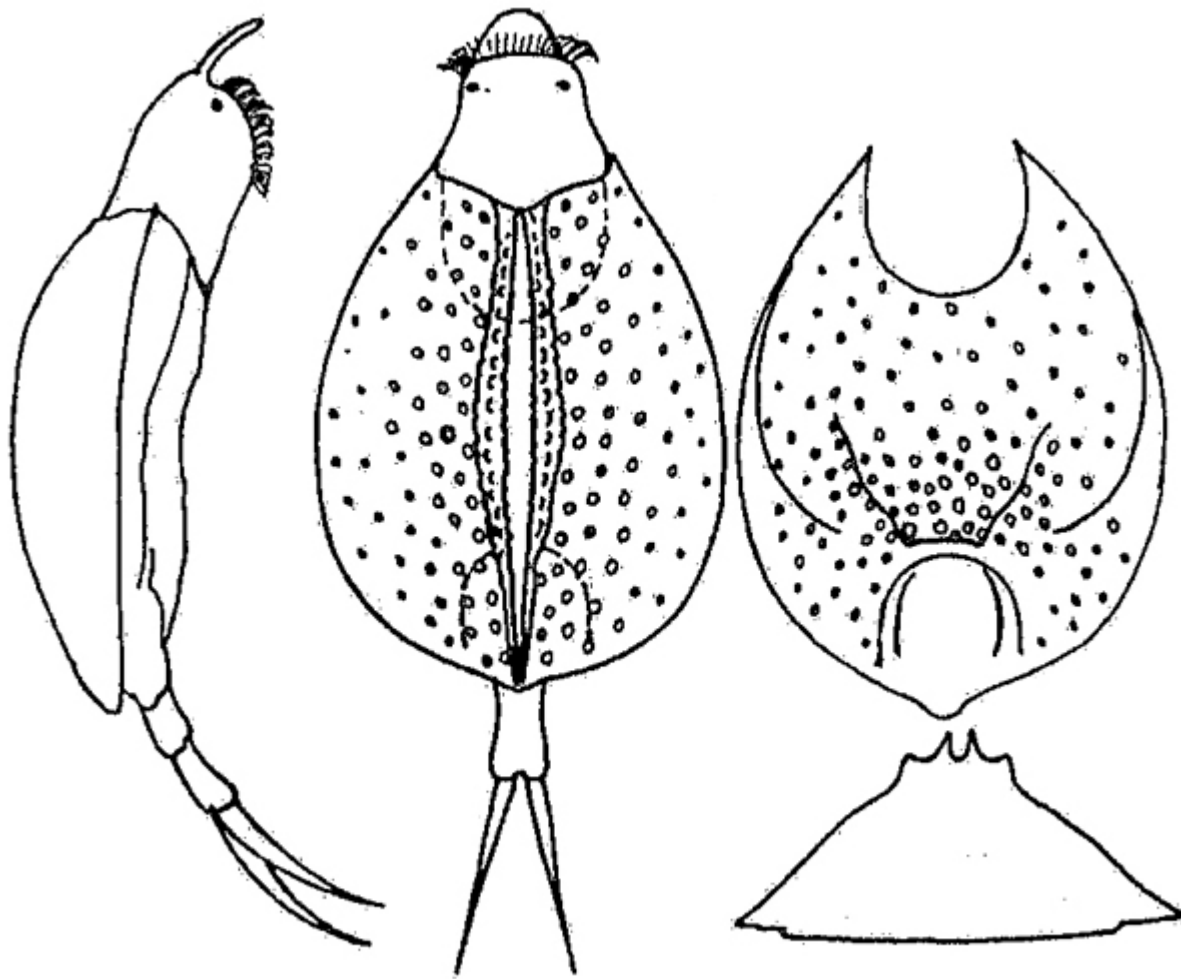
Synonym: n. a.

Sampling location: [Bussenried](#), [Simmelried](#)

Phylogenetic tree: [Lepadella punctata](#)

Diagnosis:

- lorica subcircular to widely ovate
- lorica with circular humps (ventrally and dorsally), humps become smaller towards lateral sides
- length of lorica ~ 80 µm, width ~ 65 µm
- dorsal side with 2 keels and 2 secondary keels
- ventral sinus semicircular
- 2 eyespots
- three foot segments, toes pointed



after Wulfert

Lepadella punctata

Lepadella punctata has only rarely been recorded. Only 2 specimens were found by Koste (1978). In my localities [Simmelried](#) and [Bussenried](#), however, I find the species regularly and more frequently. I have a total of over 10 records. All of them are from [Simmelried](#), with the exception of a few specimens that I found in [Bussenried](#) in August 2021.

In my population the length of the lorica was between 51 and 69 μm , so slightly smaller than given by Wulfert. I could not document exactly the dorsal side of the lorica with the four keels, but I could recognize the two larger main keels (s. fig. 5 a). The ornamentation of the ventral side appears to be almost crust-like (s. figs. 2 a-b and 4 a-b). However, the humps of the ventral lorica are arranged in a defined way and not „statistically“ arranged as Wulfert drew it (s. drawing above).

More images and information of *Lepadella punctata*: [Michael Plewka-Freshwater life-Lepadella punctata](#)

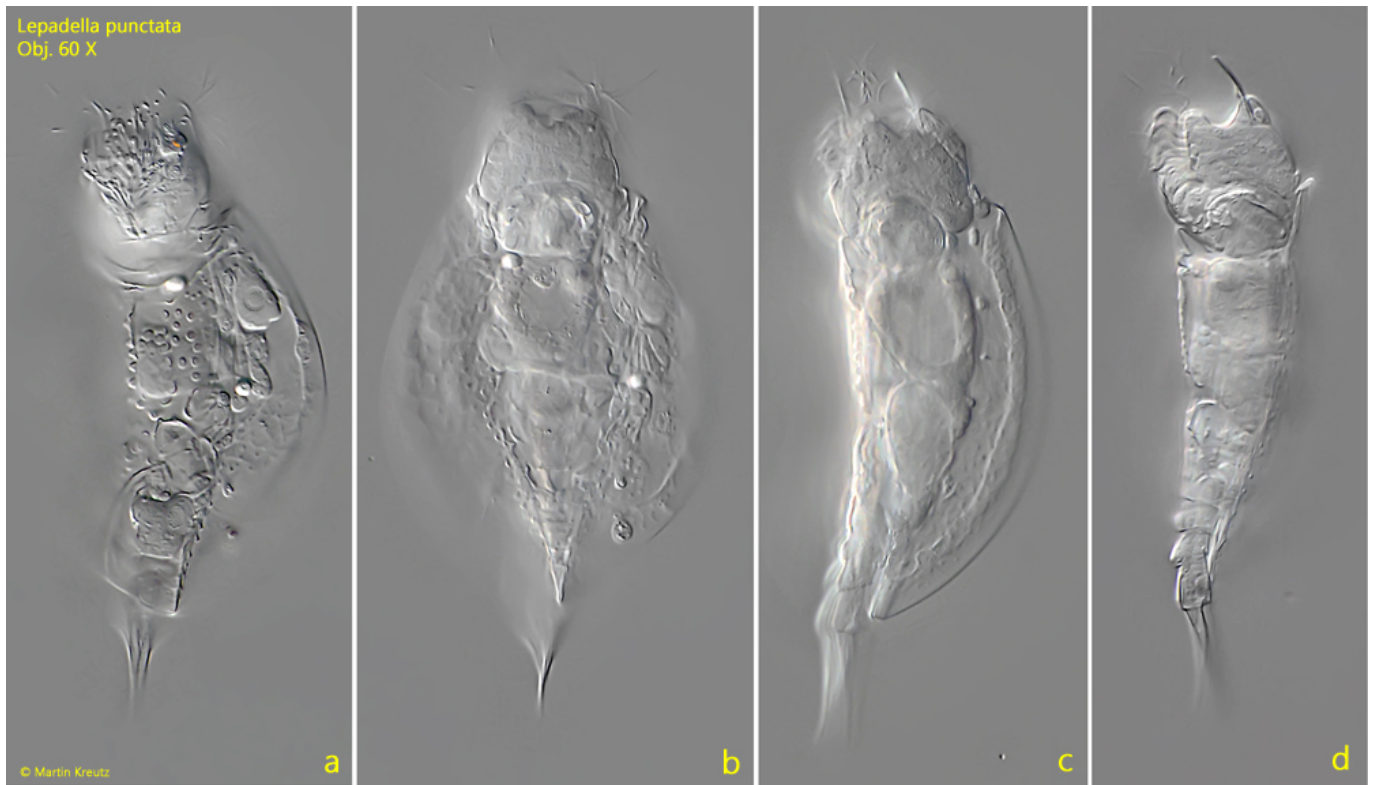


Fig. 1 a-d: *Lepadella punctata*. L = 62 μm (of the lorica). A freely swimming specimen from ventral (a), dorsal (b) and from left (c, d). Obj. 60 X.



Fig. 2 a-b: *Lepadella punctata*. L = 51 μm (of the lorica). Ventral view of a slightly squashed specimen. Obj. 100 X.

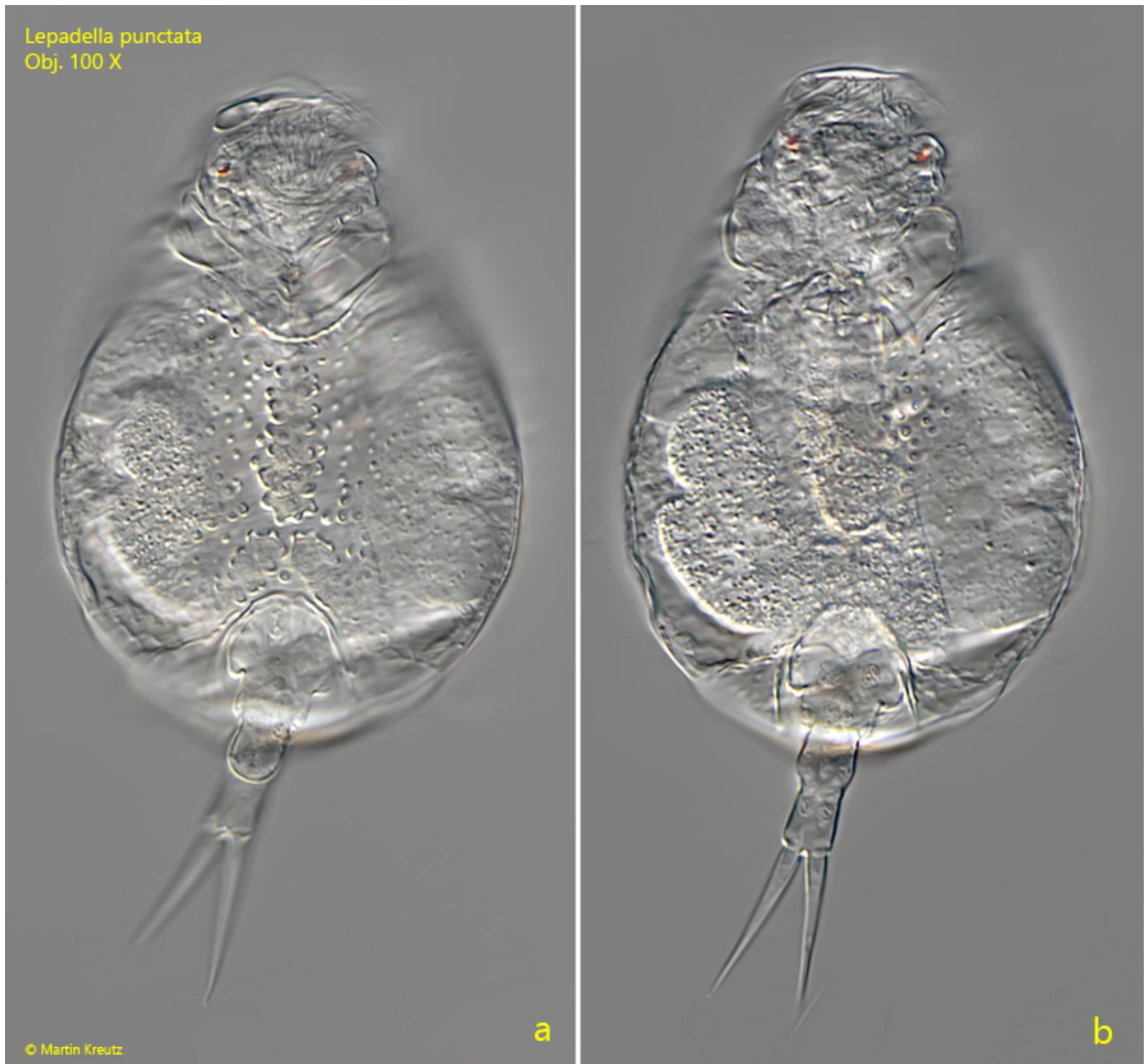


Fig. 3 a-b: *Lepadella punctata*. L = 63 μ m (of the lorica). Two focal planes from ventral of a second specimen found in May 2010. Obj. 100 X.

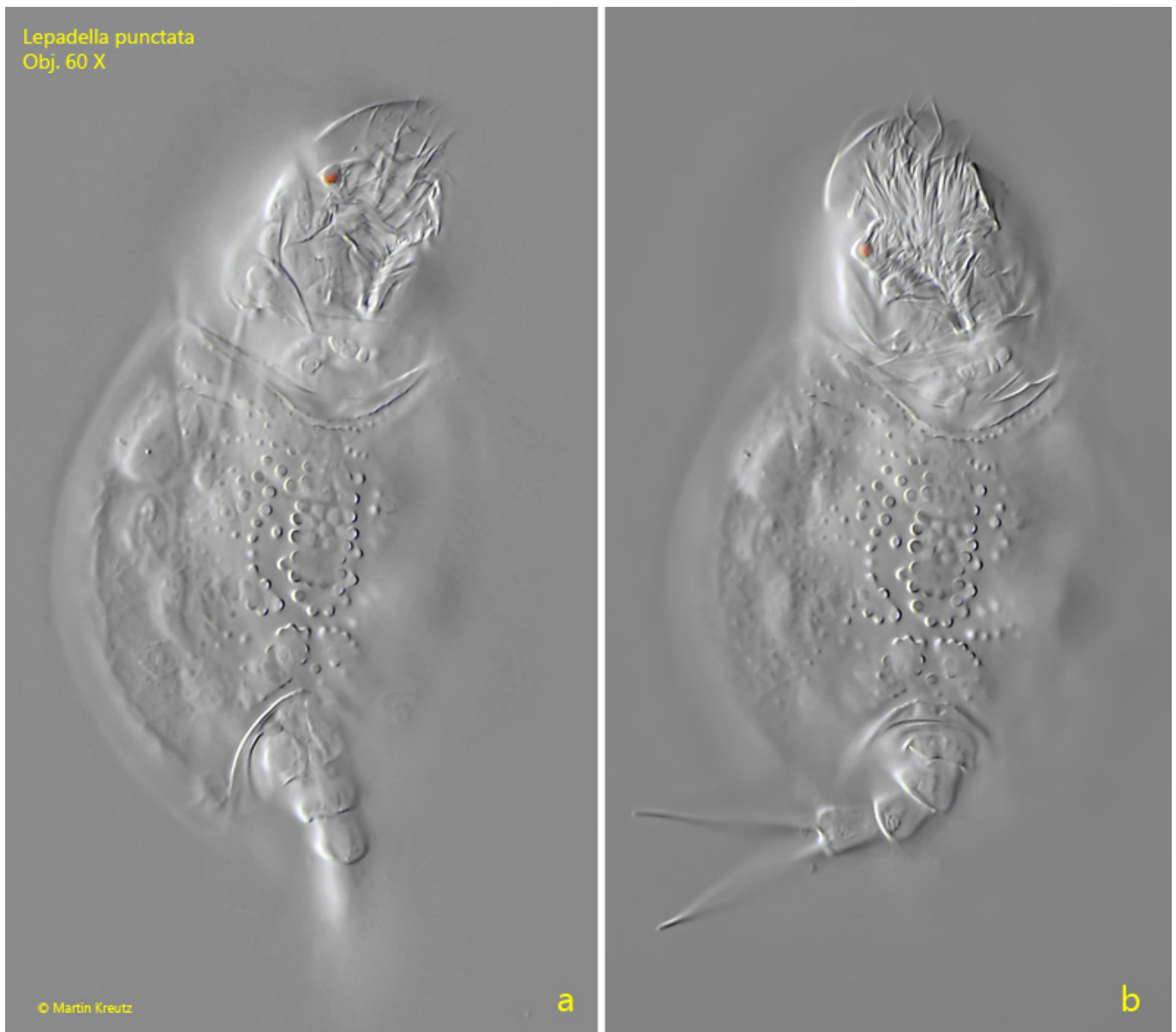


Fig. 4 a-b: *Lepadella punctata*. L = 69 μ m (of the lorica). Ventral view of a third freely swimming specimen found in August 2021. Obj. 60 X.

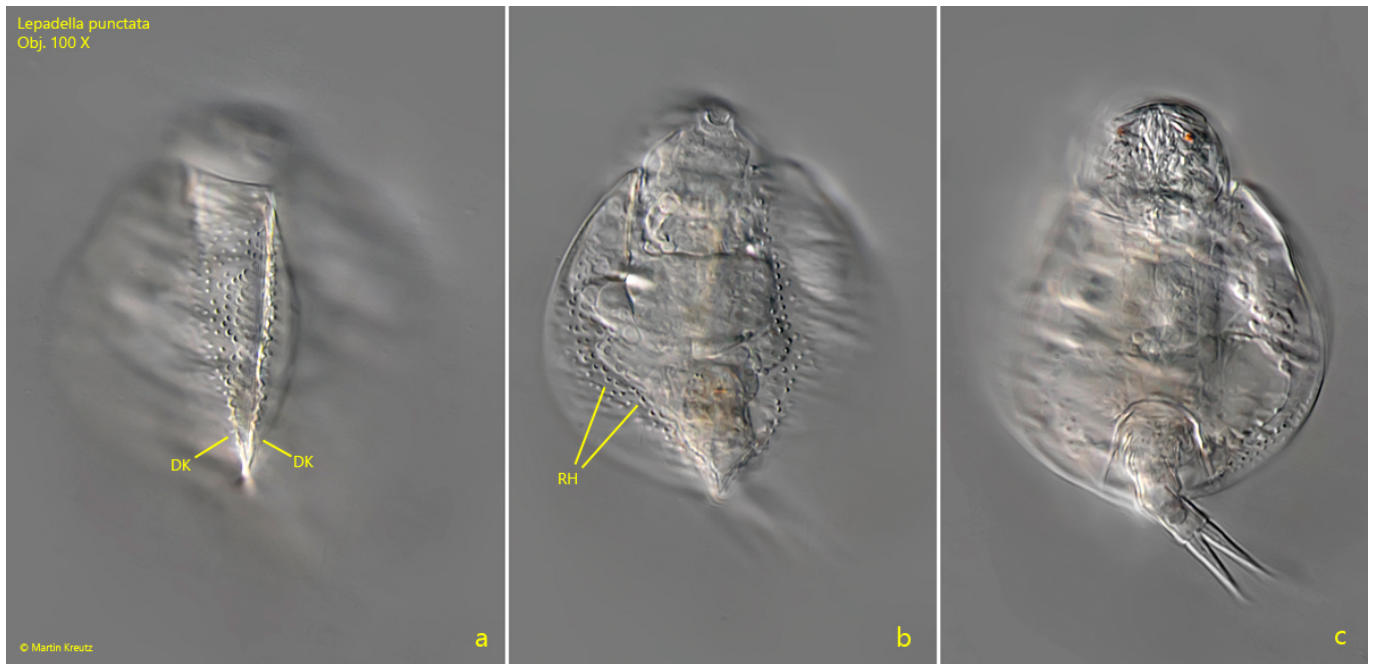


Fig. 5 a-c: *Lepadella punctata*. L = 60 μm (of the lorica). Dorsal view of a slightly squashed specimen. Note the double keel (DK) and the round humps also present on the dorsal side. Obj. 100 X.