

Pediastrum duplex* var. *asperum

(A. Braun) Hansgirg, 1855

Most likely ID: n.a.

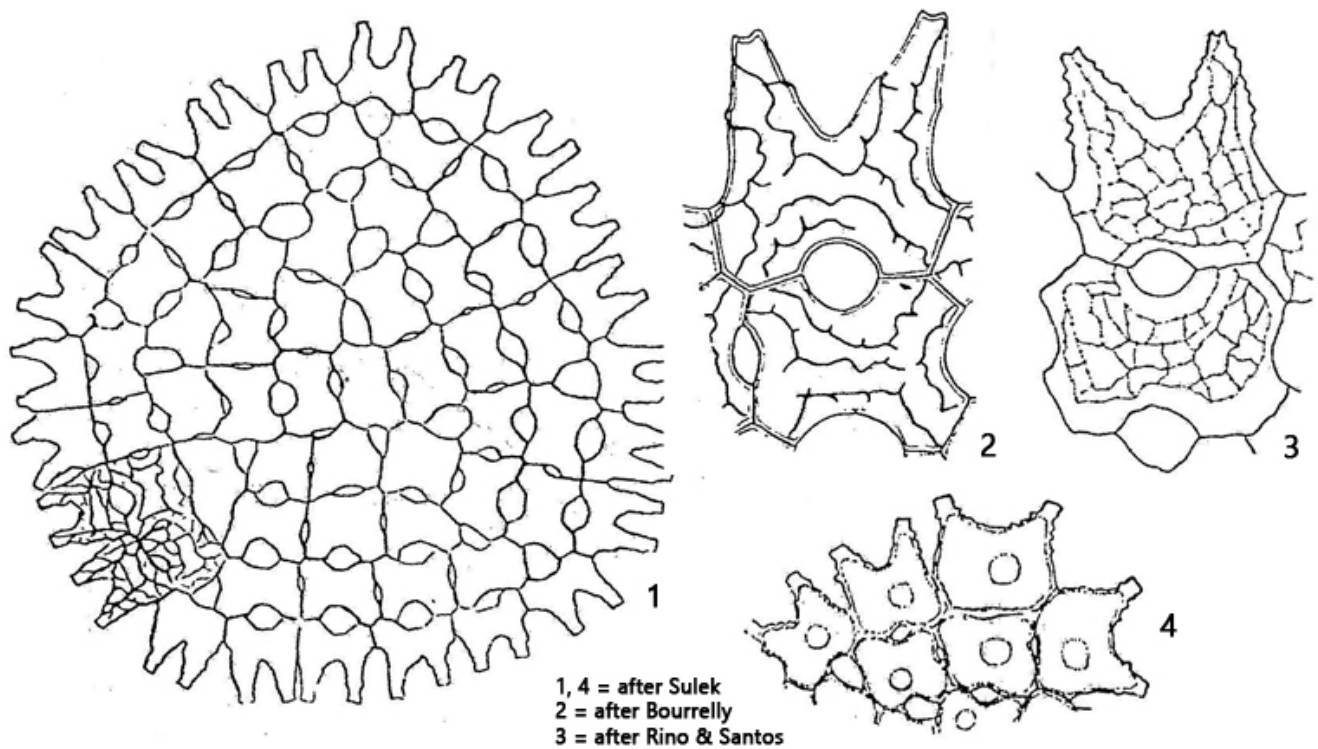
Synonyms: *Pediastrum pertusum* var. *asperum*, *Pediastrum angulosum* var. *asperum*

Sampling location: [Pond of the convent Hegne](#)

Phylogenetic tree: [Pediastrum duplex](#) var. *asperum*

Diagnosis:

- coenobium star-shaped, flat and single layered
- diameter coenobium about 80 µm
- coenobium of (4)-8-16-32-(64) cells
- cell wall with a reticulate ornamentation and warts
- marginal cells U-shaped and bilobed
- inner cells H-shaped
- intercellular space lens-shaped or circular
- chloroplast parietal
- single pyrenoid



Pediastrum duplex var. *asperum*

I found *Pediastrum duplex* var. *asperum* in October 2023 in the uppermost mud layer of the pond the convent Hegne. The main characteristic is the reticulate ornamentation of the cell wall interspersed with warts. This can only be recognized at higher magnifications. However, the species can also be recognized at lower magnifications by the “rough” outline. *Pediastrum duplex* var. *asperum* only occurred sporadically in the samples. The population may be larger in the summer months.

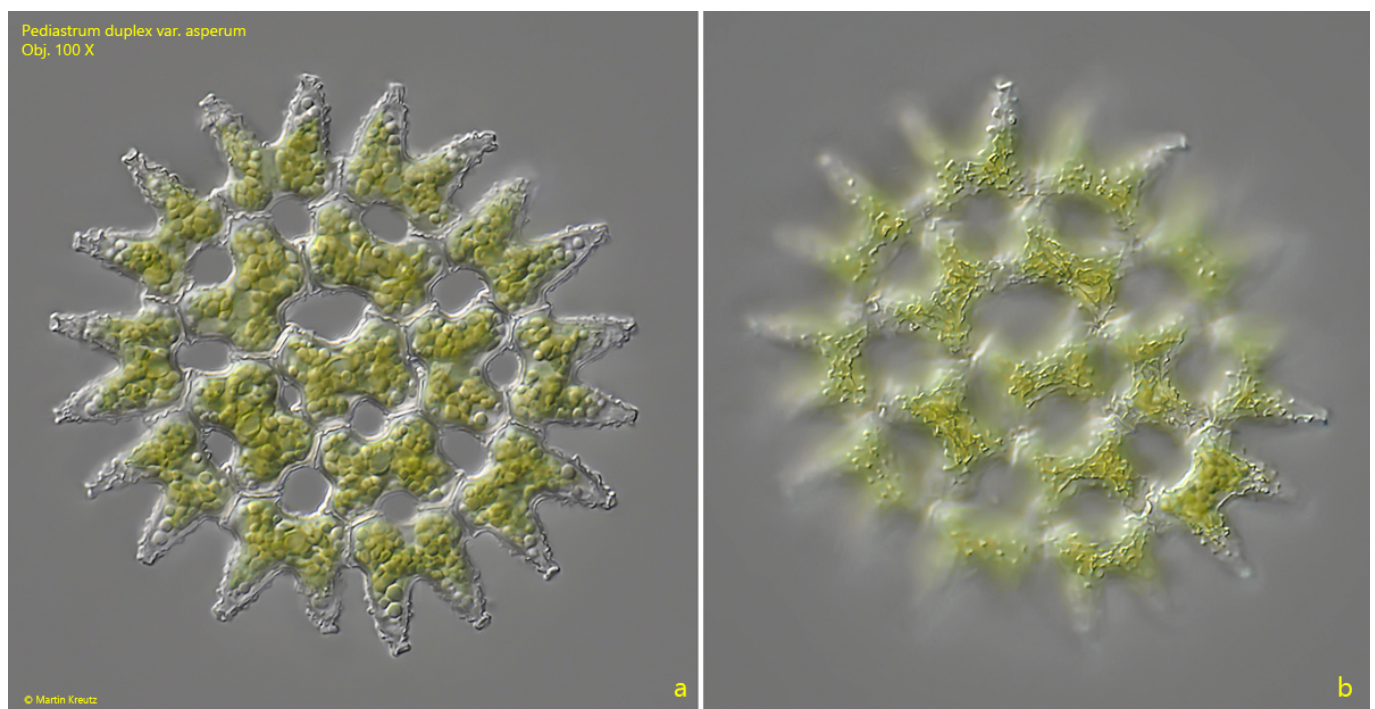


Fig. 1 a-b: *Pediastrum duplex* var. *asperum*. D = 72 μ m. Two focal planes of a coenobium of

16 cells. Note the reticulate ornamentation of the cell wall (b). Obj. 100 X.