

***Penium polymorphum* (Perty) Perty, 1852**

**Most likely ID:** n.a.

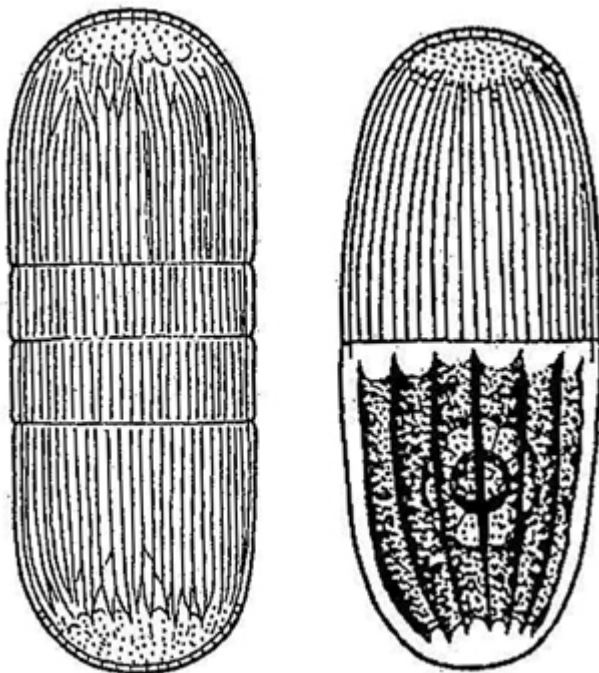
**Synonym:** n.a.

**Sampling location:** [Sima Moor \(Austria\)](#)

**Phylogenetic tree:** [Penium polymorphum](#)

**Diagnosis:**

- cells cylindrical or ellipsoidal with rounded ends
- length 35–75  $\mu\text{m}$
- cell wall with longitudinal striae, pass into reticulate pattern at apices
- 1–4 girdle bands
- two stelloid chloroplasts with longitudinal ribs and one pyrenoid

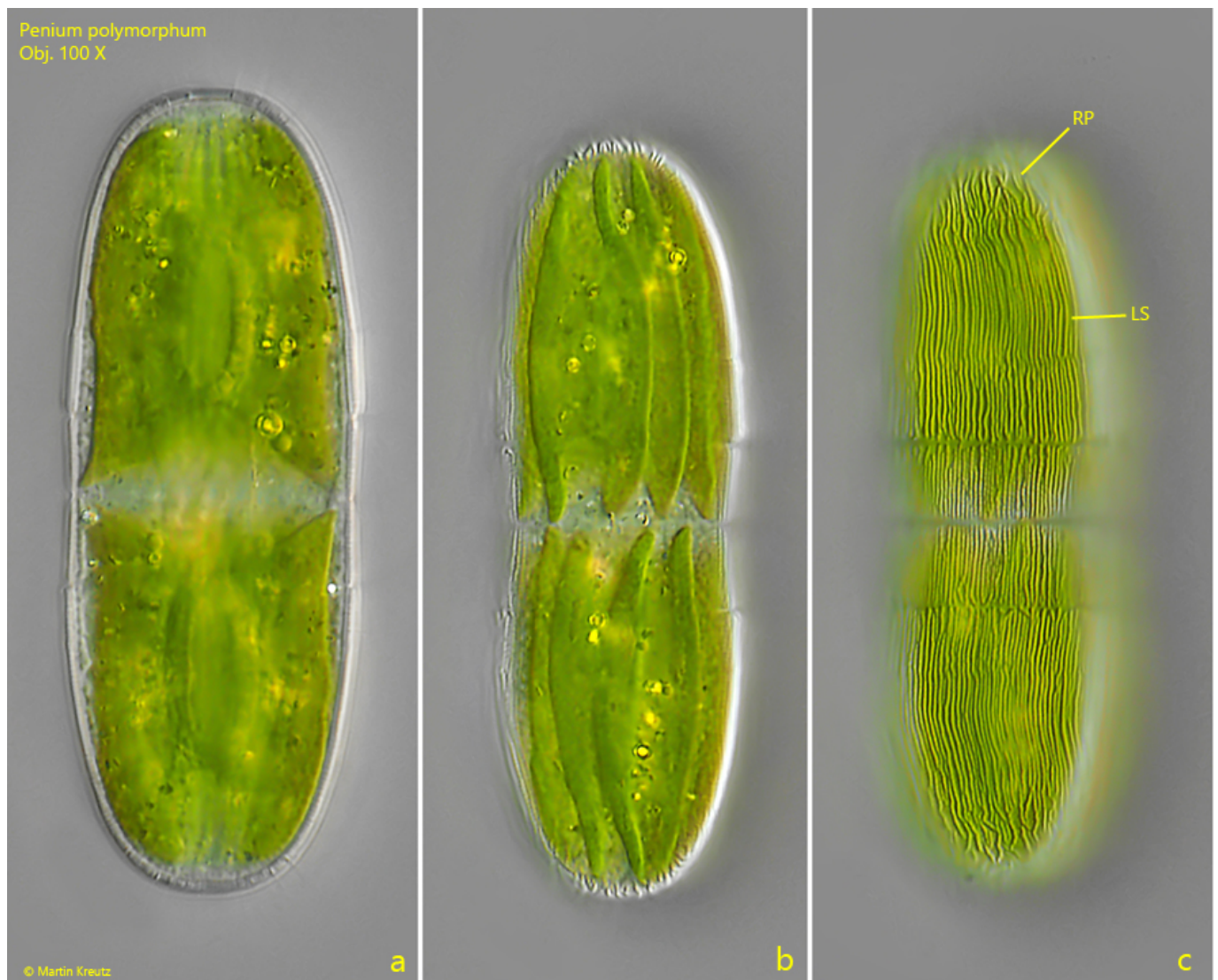


after Förster

*Penium polymorphum*

I found *Penium polymorphum* in July 2017 and in June 2024 in the [Sima Moor \(Austria\)](#). This desmid alga is not present in my local sites.

The cells of *Penium polymorphum* are cylindric-oval with each one stelloid chloroplast per semi-cell. The cell wall shows a characteristic pattern. In the middle an almost parallel longitudinal striation is visible what pass into a reticulate pattern towards the apices (s. fig. 1 c).



**Fig. 1 a-c:** *Penium polymorphum*. L = 75  $\mu\text{m}$ . Three focal planes of a specimen found in June 2024 in the [Sima Moor](#). Note the longitudinal striation (LS) of the cell wall which pass into a reticulate pattern (RP) towards the apices. Obj. 100 X.



**Fig. 2 a-c:** *Penium polymorphum*. L = 60  $\mu\text{m}$ . Three focal planes of a second specimen. Obj. 100 X.