

Pompholyxophrys stellata

Nicholls & Dürschmidt, 1985

Most likely ID: n.a.

Synonym: n.a

Sampling location: [Simmelried](#)

Phylogenetic tree: [Pompholyxophrys stellata](#)

Diagnosis:

- cell spherical, diameter 24–65 µm (including layer auf scales)
- covered with flattened, oval scales
- scales oval in frontal view, length 3.0–5.4 µm X width 1.6–3.5 µm
- scales slender oval in lateral view, in the middle often swollen.
- cytoplasm orange or reddish with colored granules
- feeds on algae
- nucleus located eccentrically, with central nucleolus
- no contractile vacuole visible
- pseudopodia fine and short

No drawings from previous authors available.

I have found *Pompholyxophrys stellata* so far exclusively in the [Simmelried](#). The findings are from January 1997, February 2012 and July 2014. After that I have not found any more specimens. The species can be easily distinguished from [Pompholyxophrys punicea](#) by the flattened scales. In lateral view the scales appear very flat oval, sometimes somewhat thickened in the middle. In frontal view they are oval. Leaving these differences aside, the species appears to have the same characteristics as [Pompholyxophrys punicea](#).



Fig. 1 a-b: *Pompholyxophrys stellata*. D = 40 µm (of the squashed specimen). Two focal planes of a slightly squashed specimen. Note that some of the flat scales in lateral view are “swollen” in the middle (a, arrows). In frontal view the scales appear oval (b). Nu = nucleus. Obj. 100 X.

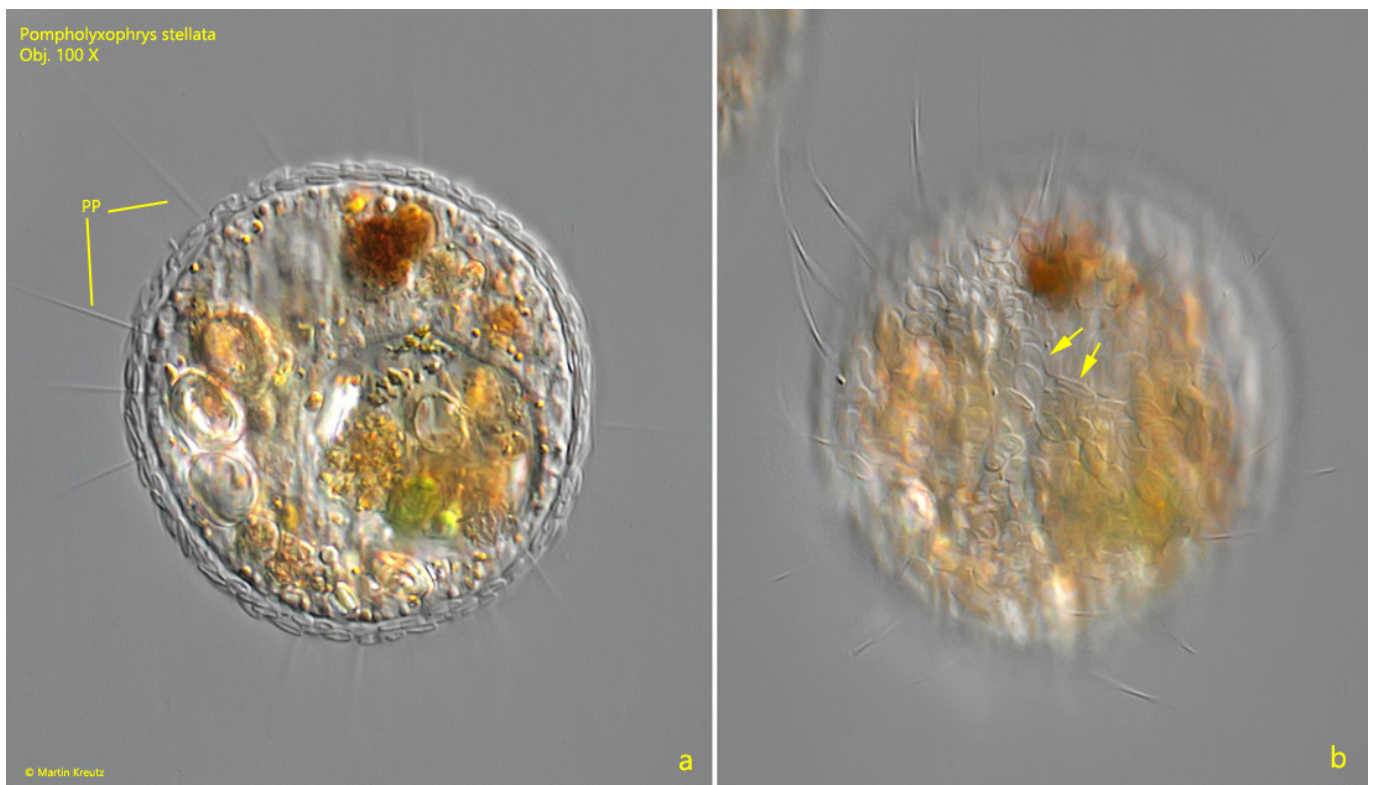


Fig. 2 a-b: *Pompholyxophrys stellata*. D = 54 µm (of the squashed specimen). Two focal planes of a slightly squashed second. In frontal view the flat scales are oval (b, arrows). PP = pseudopodia. Obj. 100 X.