

Rhodobacteria 1

Most likely ID: n.a.

Synonym: n.a.

Sampling location: [Simmelried](#)

Phylogenetic tree: n.a.

Diagnosis:

- the cells are oblong rods
- length 4-5.5 µm
- one irregularly shaped, highly refractive mass in center
- color slightly pink
- colonies irregularly shaped without sharp outline
- no visible gelatinuous sheet
- colonies of about 50-100 µm in diameter

No drawings from previous authors available.

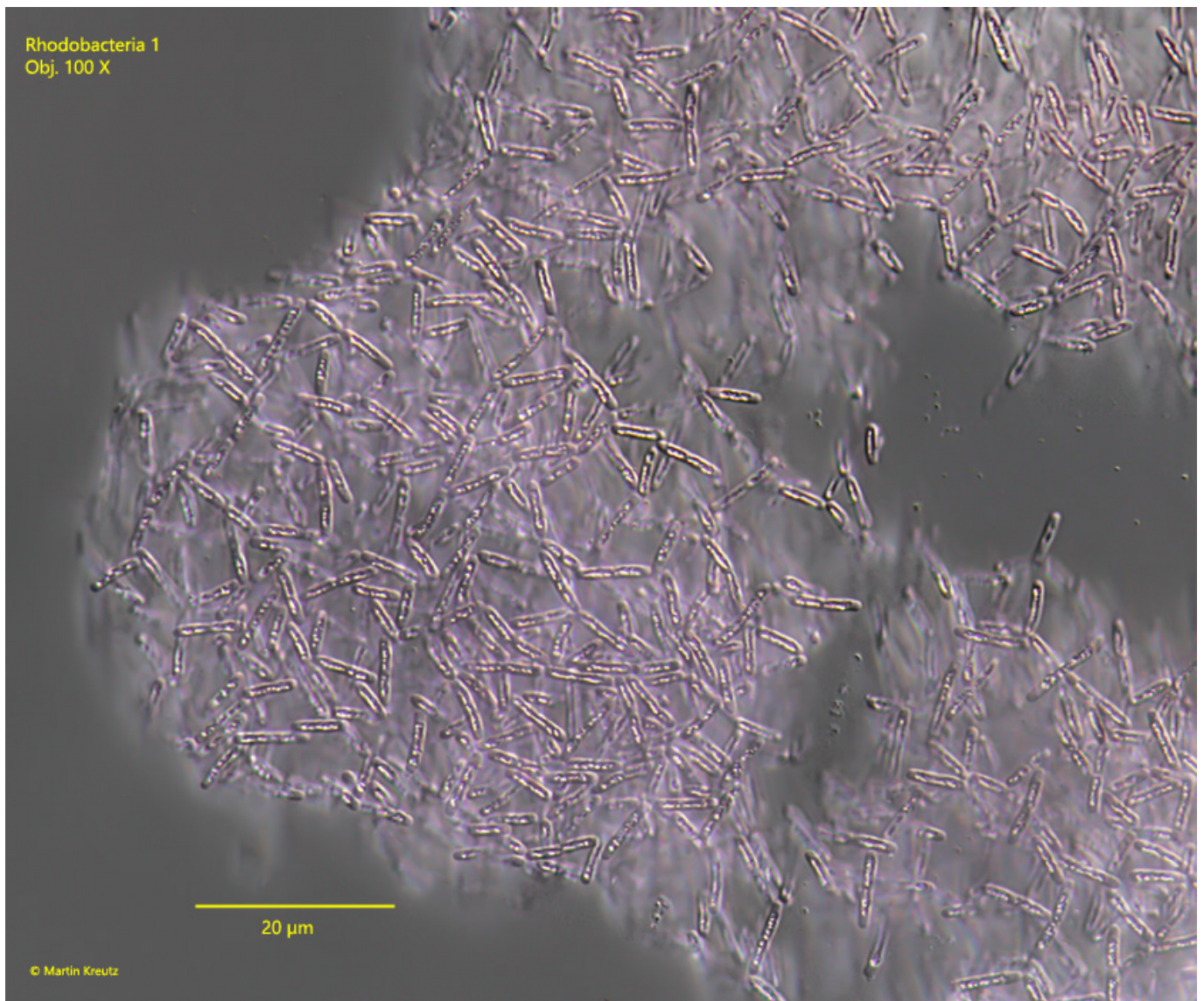


Fig. 1: *Rhodobacteria 1*. $L = 4\text{-}5.5\ \mu\text{m}$. A not squashed colony. Obj. 100 X.

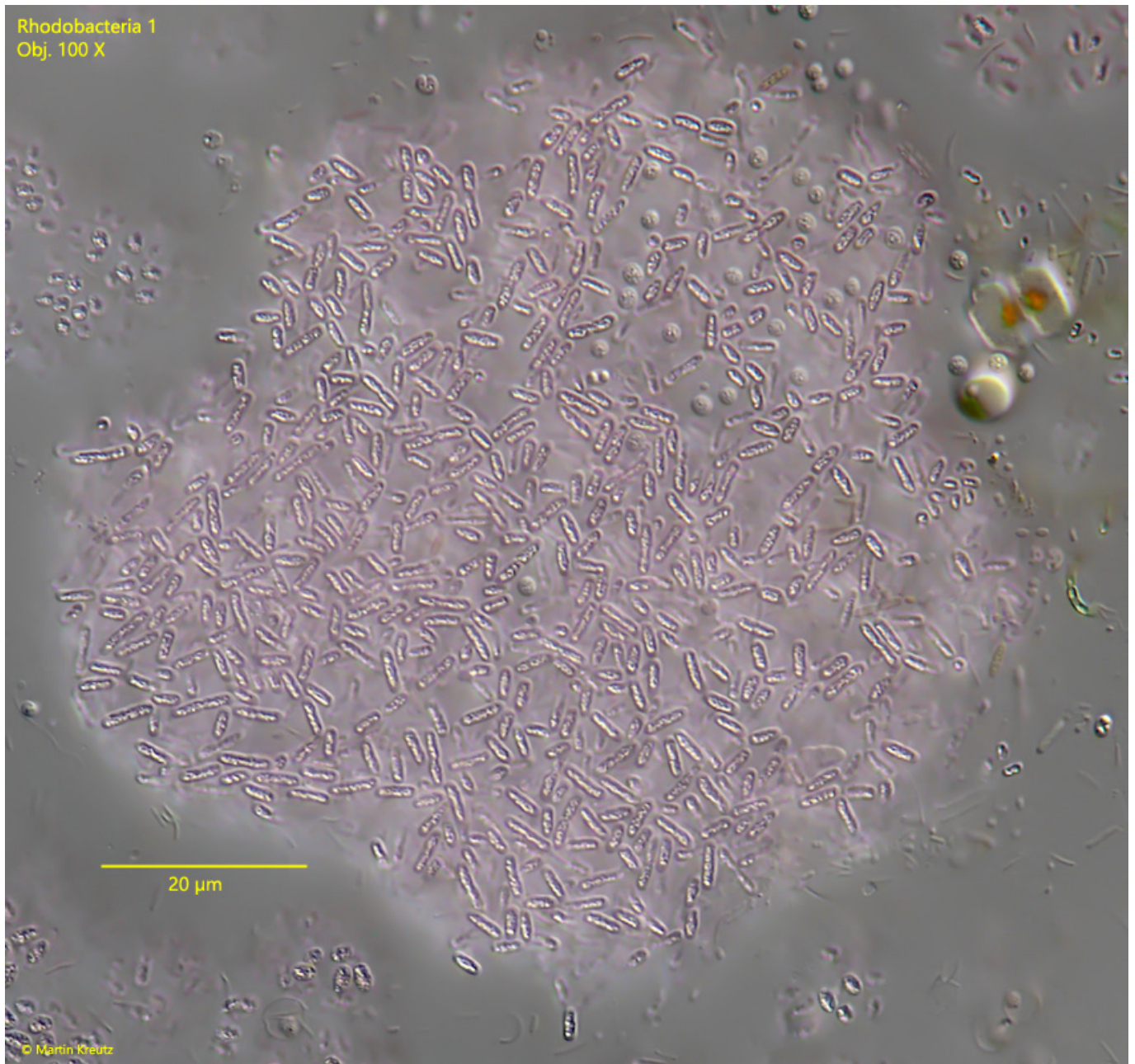


Fig. 2: *Rhodobacteria 1*. L = 4-5.5 µm. A pink colored colony with a diameter of about 80 µm. The individual cells are separated from each other and arranged irregularly in the colony. Obj. 100 X.

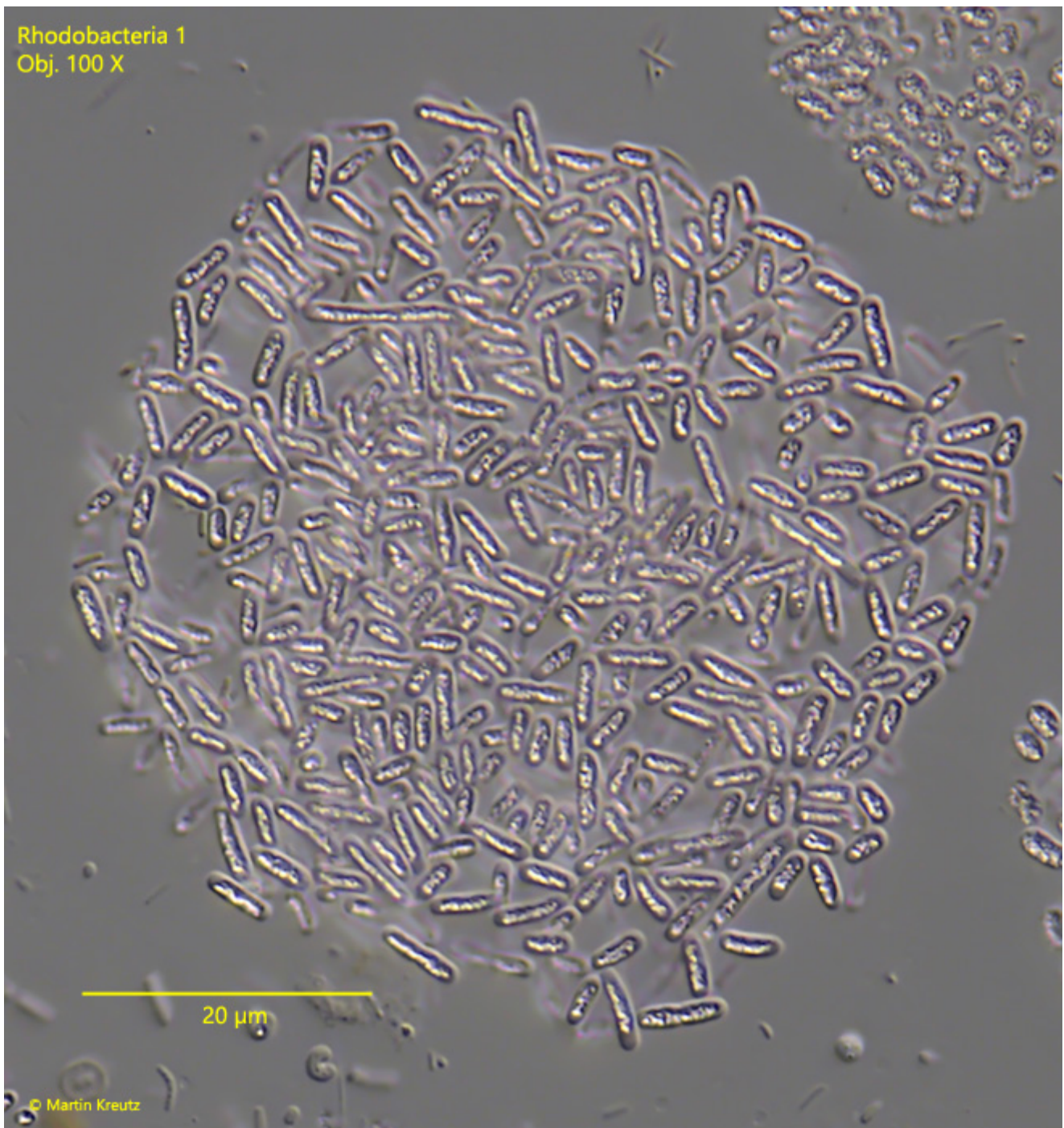


Fig. 3: *Rhodobacteria 1*. L = 4-5.5 μm . A slightly squashed, smaller colony. Obj. 100 X.



Fig. 4: *Rhodobacteria 1*. $L = 4\text{--}5.5\ \mu\text{m}$. The single *Rhodobacteria 1* cells in detail. Note the irregularly shaped, highly refractive mass in the center of each cell. Obj. 100 X.