

Rhodobacteria 11

Most likely ID: n.a.

Synonym: n.a

Sampling location: [Simmelried](#)

Phylogenetic tree: n.a.

Diagnosis:

- the cells are oblong, young cells ovoid
- length 5-10 µm
- slightly pink colored
- spherical colonies, about 50-100 µm in diameter
- cells in the colonies are separated from each other
- no visible gelatinous sheath
- only few visible division stages in the colonies
- granules in the cells are scattered, with some distinct dark granules per cell

No drawings from previous authors available.

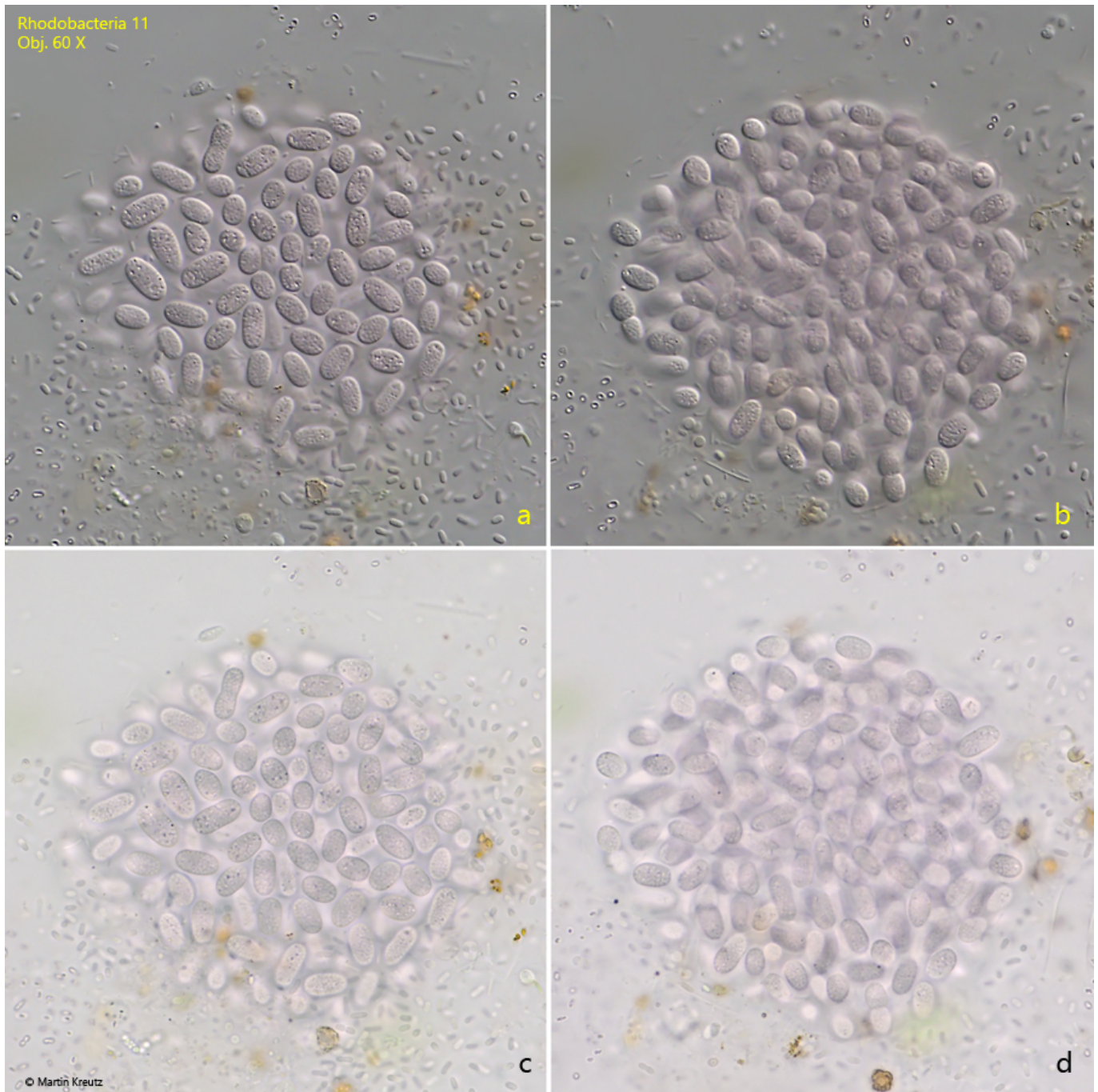


Fig. 1: *Rhodobacteria 11*. L = 5-10 μm . A slightly squashed colony in DIC (a, b) and in brightfield illumination (c, d). All cells are separated from each other. No gelatinous sheath is visible. Obj. 60 X.

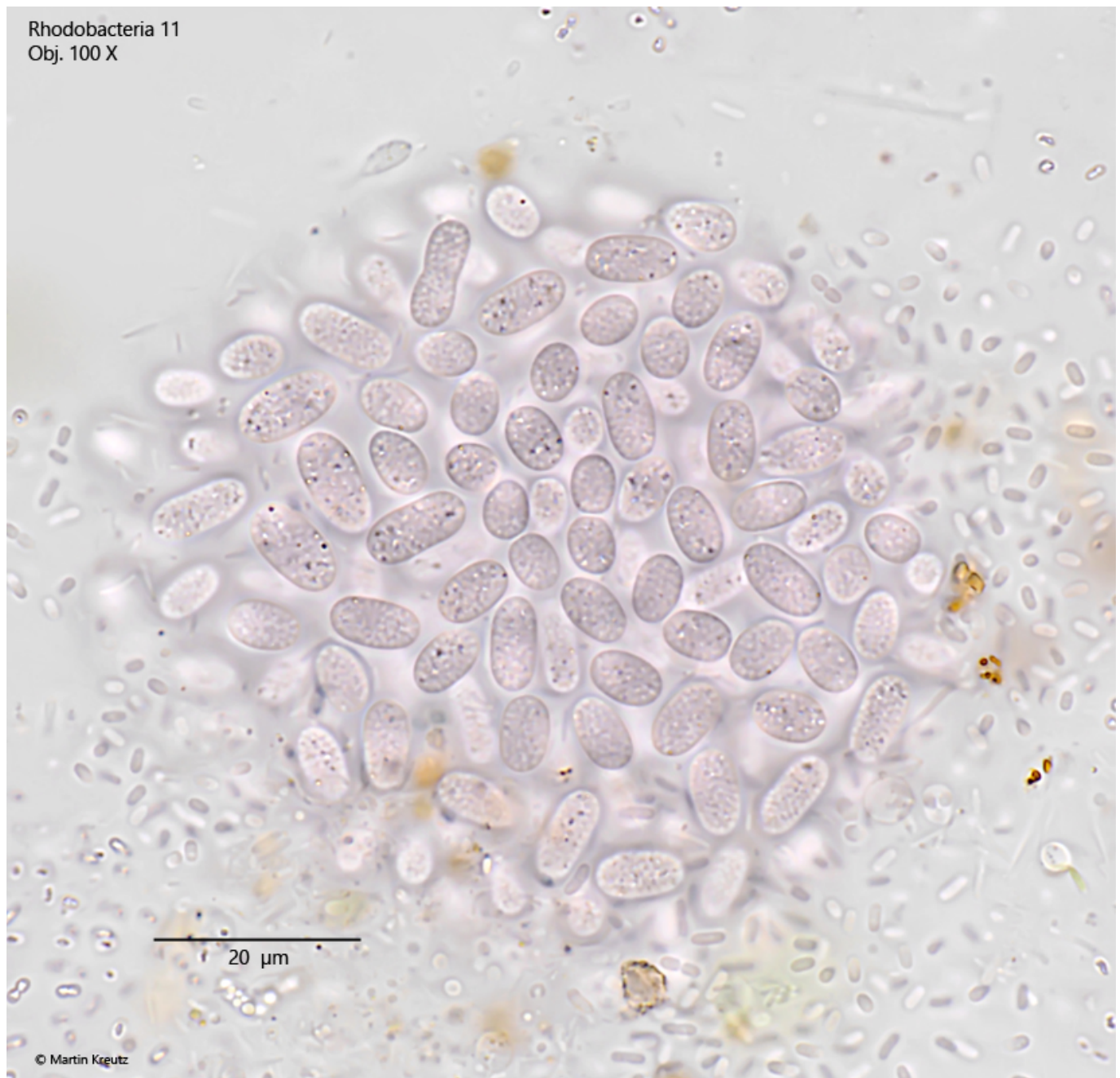


Fig. 2: *Rhodobacteria 11*. L = 5-10 μm. The same colony as shown in fig. 1. Obj. 100 X.

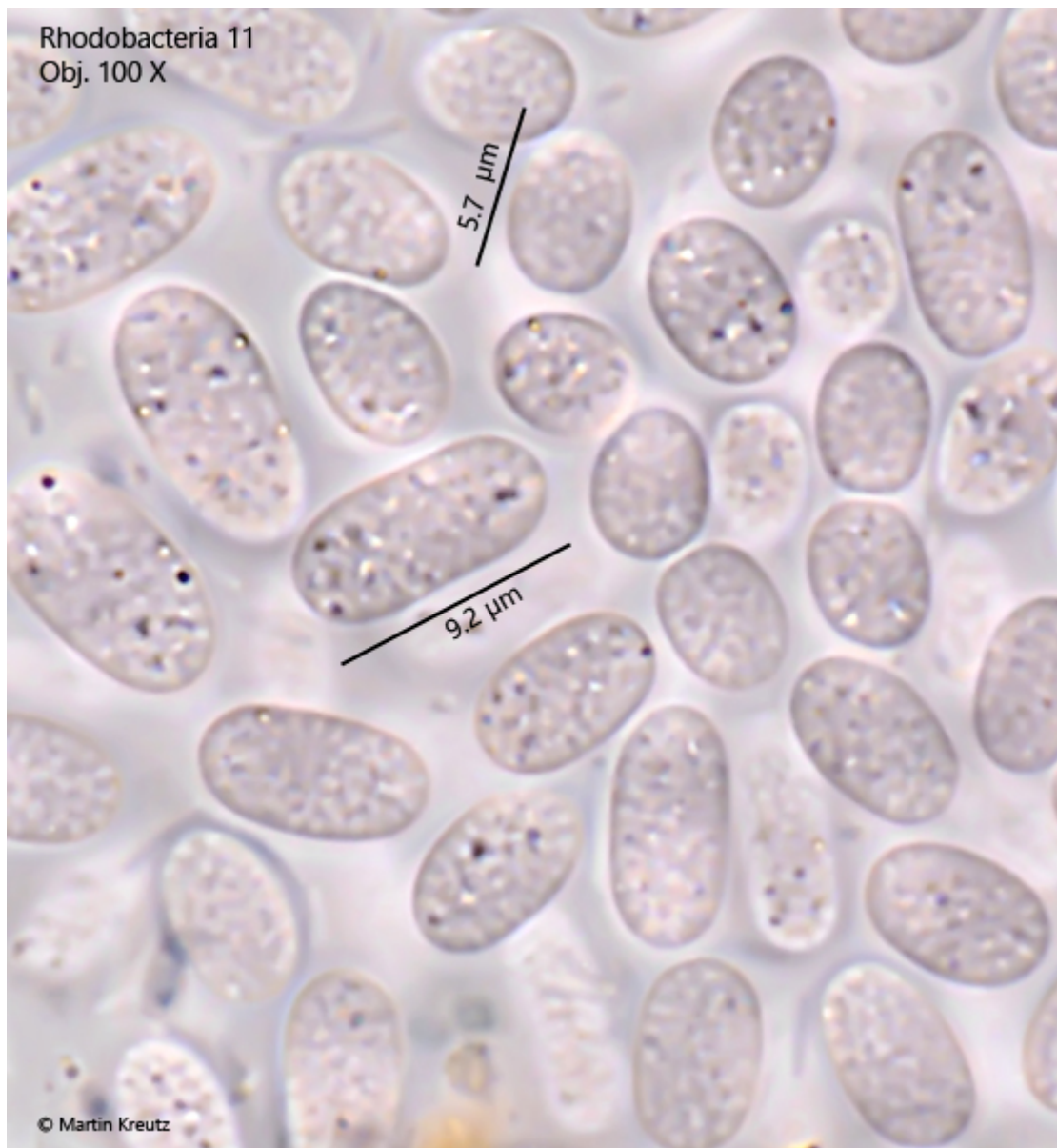


Fig. 3: *Rhodobacteria 11*. L = 5-10 μm . The cells in a squashed colony in detail. Note the distinct dark granules in the cells. Obj. 100 X.