

Rhodobacteria 2

Most likely ID: n.a.

Synonym: n.a

Sampling location: [Simmelried](#)

Phylogenetic tree: n.a.

Diagnosis:

- the cells are oval, sometimes irregularly
- length 3 – 4.5 µm
- cells filled almost completely with irregularly shaped, highly refractive mass
- colorless or slightly pink
- colonies irregularly shaped without sharp outline
- no visible gelatinuous sheat
- colonies of about 30 – 70 µm in diameter

No drawings from previous authors available.

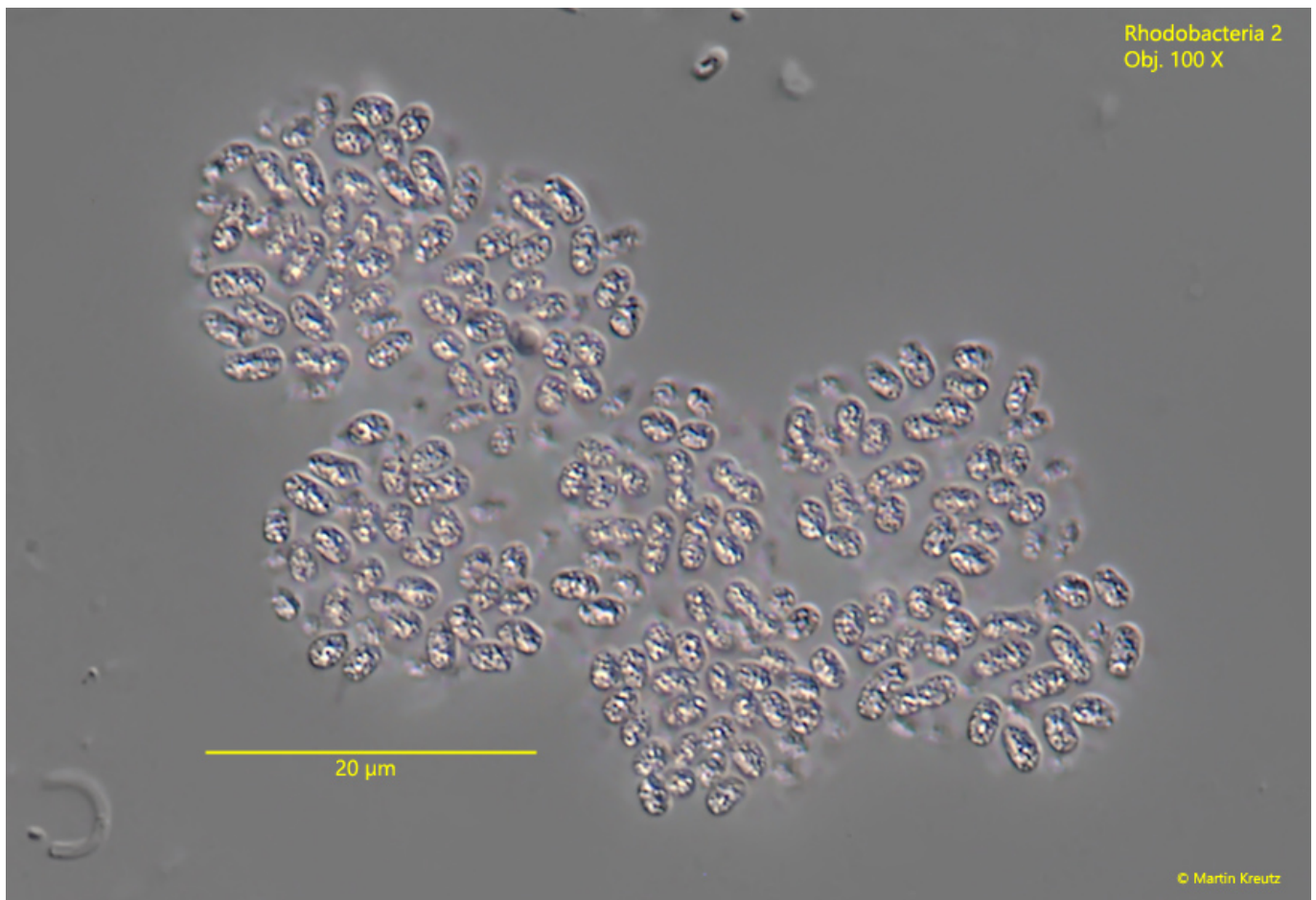


Fig. 1: *Rhodobacteria 2*. $L = 3 - 4.5 \mu\text{m}$. A slightly squashed colony. All cells are separated from each other. Obj. 100 X.

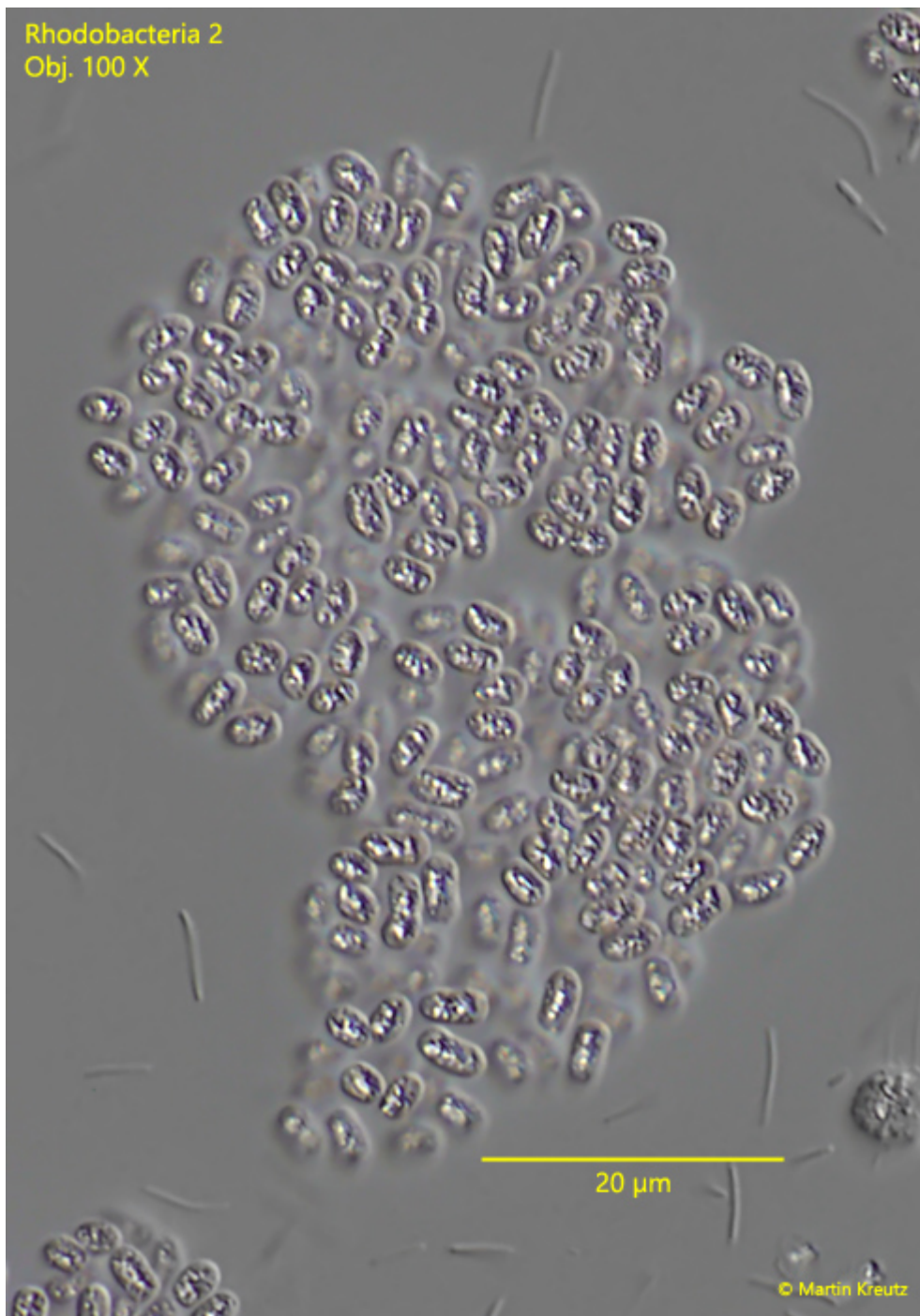


Fig. 2: *Rhodobacteria 2*. L = 3 - 4.5 µm. A slightly squashed colony. Obj. 100 X.

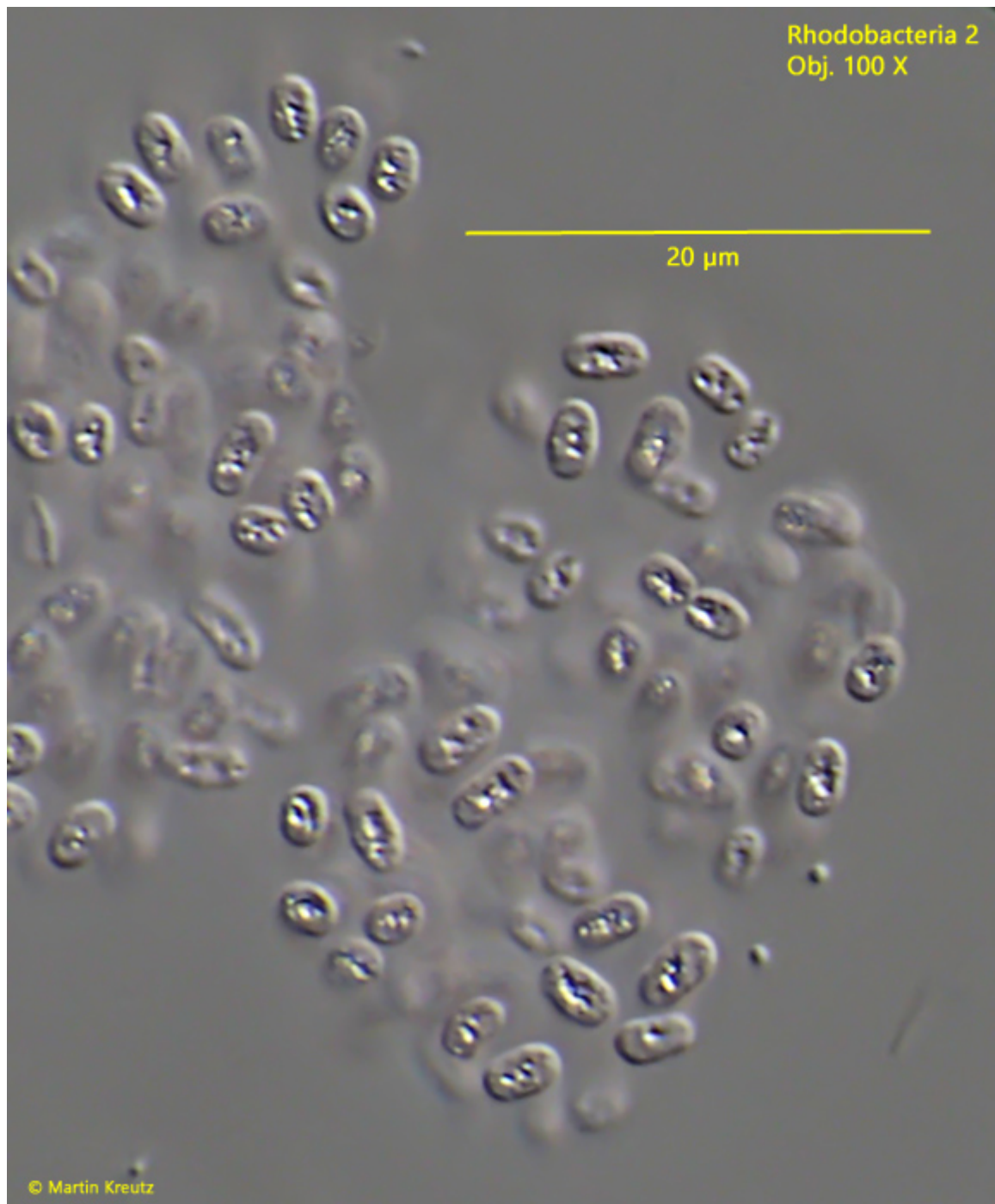


Fig. 3: *Rhodobacteria 2*. $L = 3 - 4.5 \mu\text{m}$. A third, slightly squashed colony. Obj. 100 X.

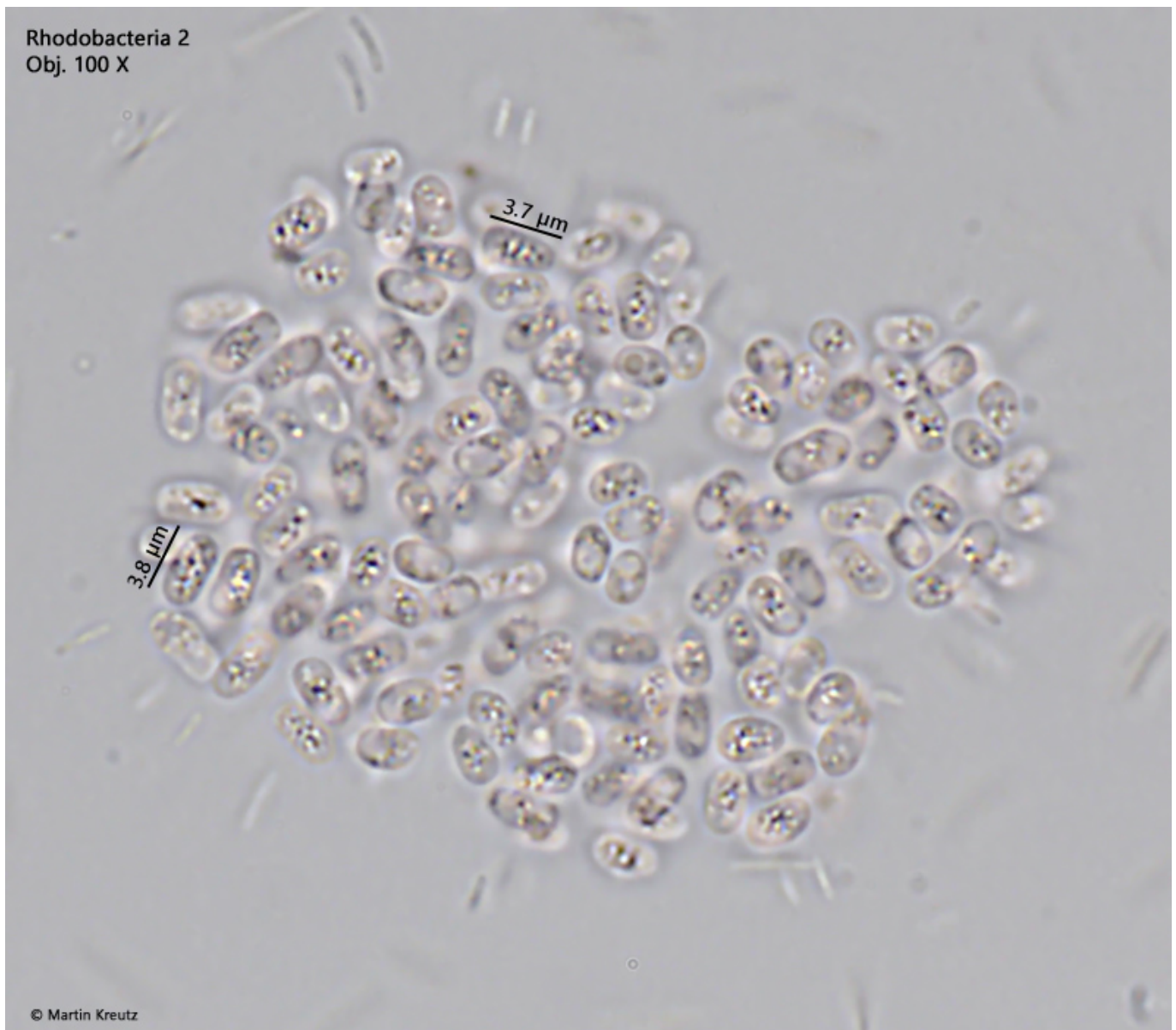


Fig. 4: *Rhodobacteria 2*. $L = 3 - 4.5 \mu\text{m}$. A colony in brightfield. Obj. 100 X.

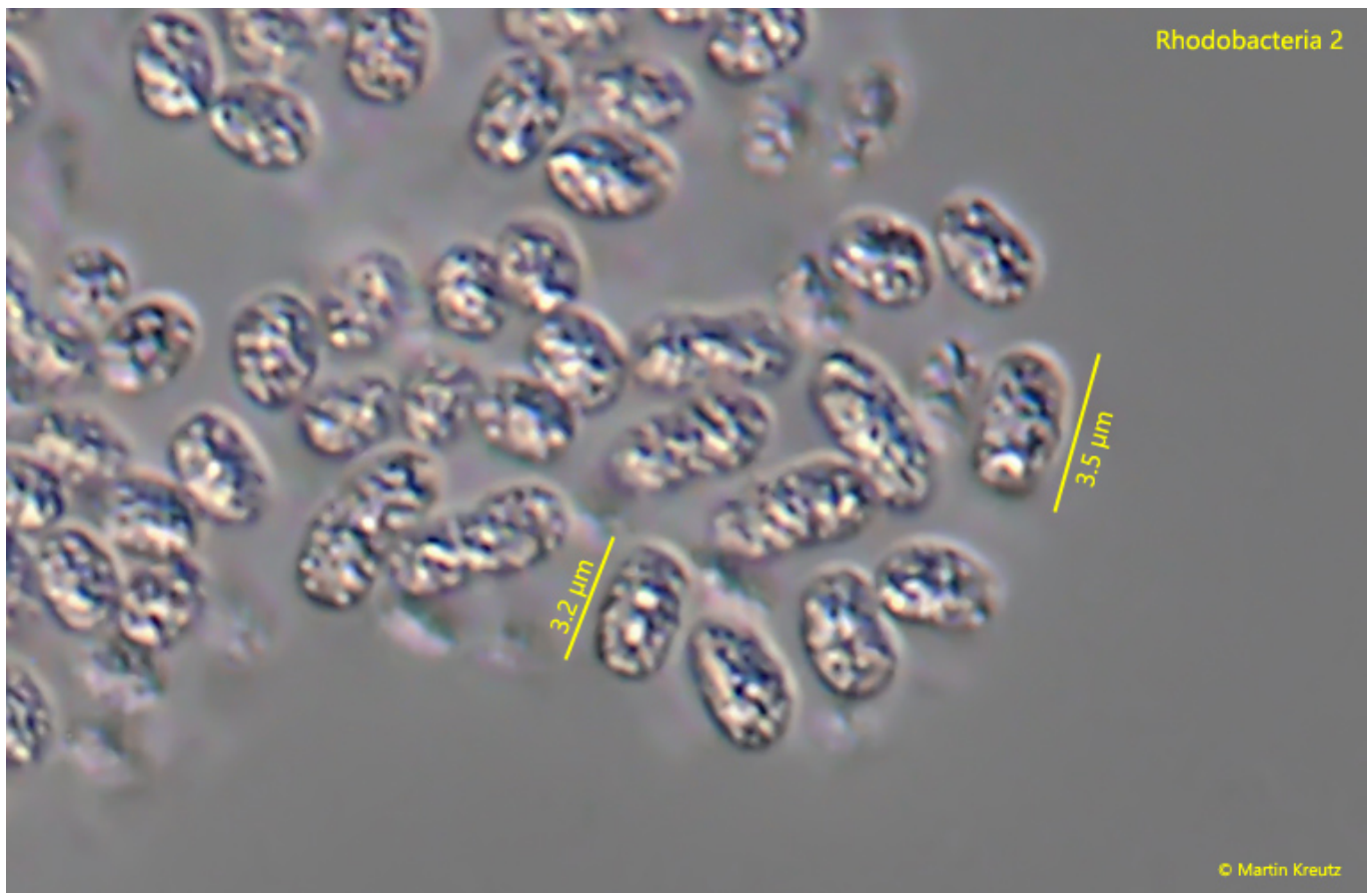


Fig. 5: *Rhodobacteria 2*. $L = 3 - 4.5 \mu\text{m}$. The cells in detail. The cells are almost completely filled with a highly refractive mass. Obj. 100 X.

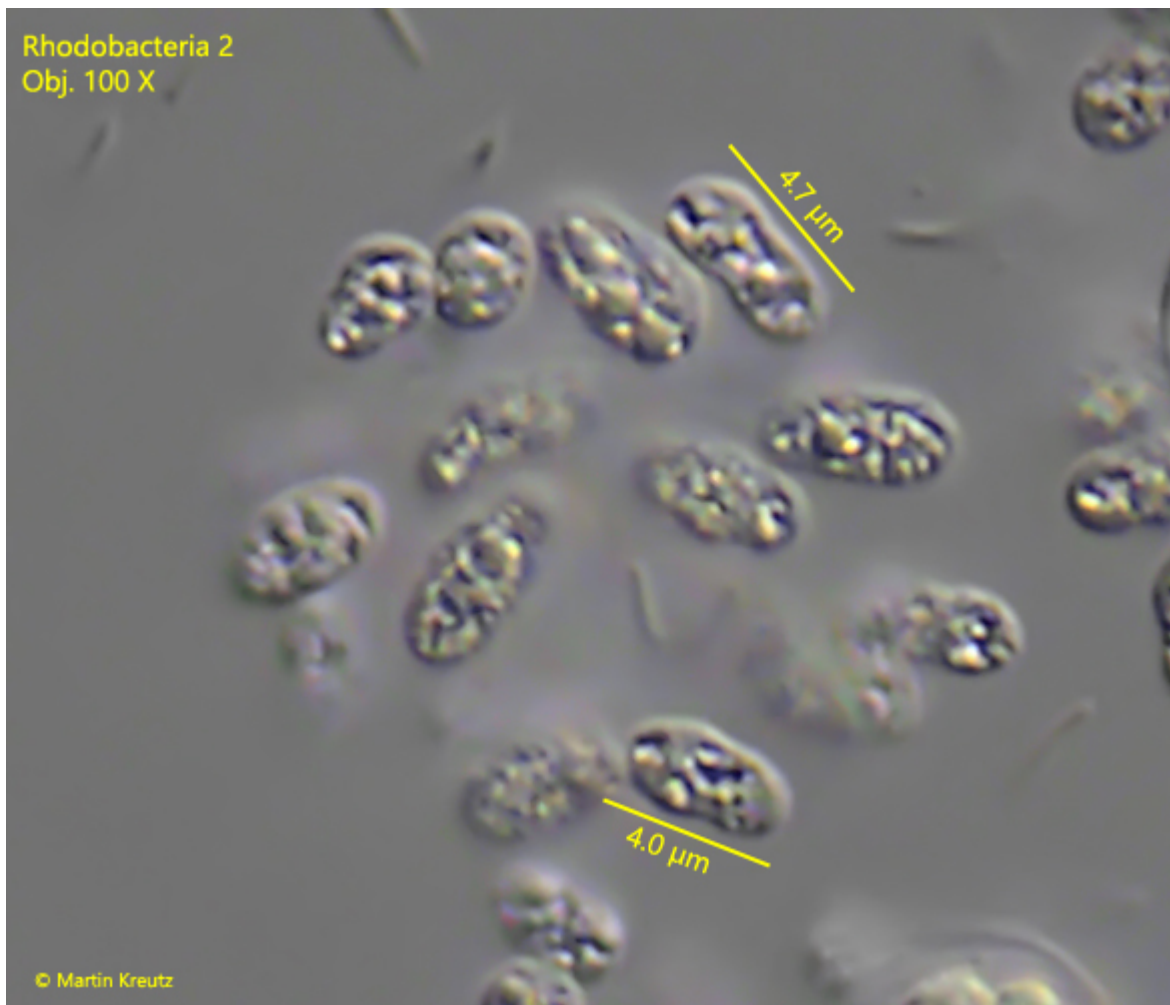


Fig. 6: *Rhodobacteria 2*. $L = 3 - 4.5 \mu\text{m}$. The cells from a second colony in detail. Obj. 100 X.