

## ***Rhodobacteria 5***

**Most likely ID:** n.a.

**Synonym:** n.a

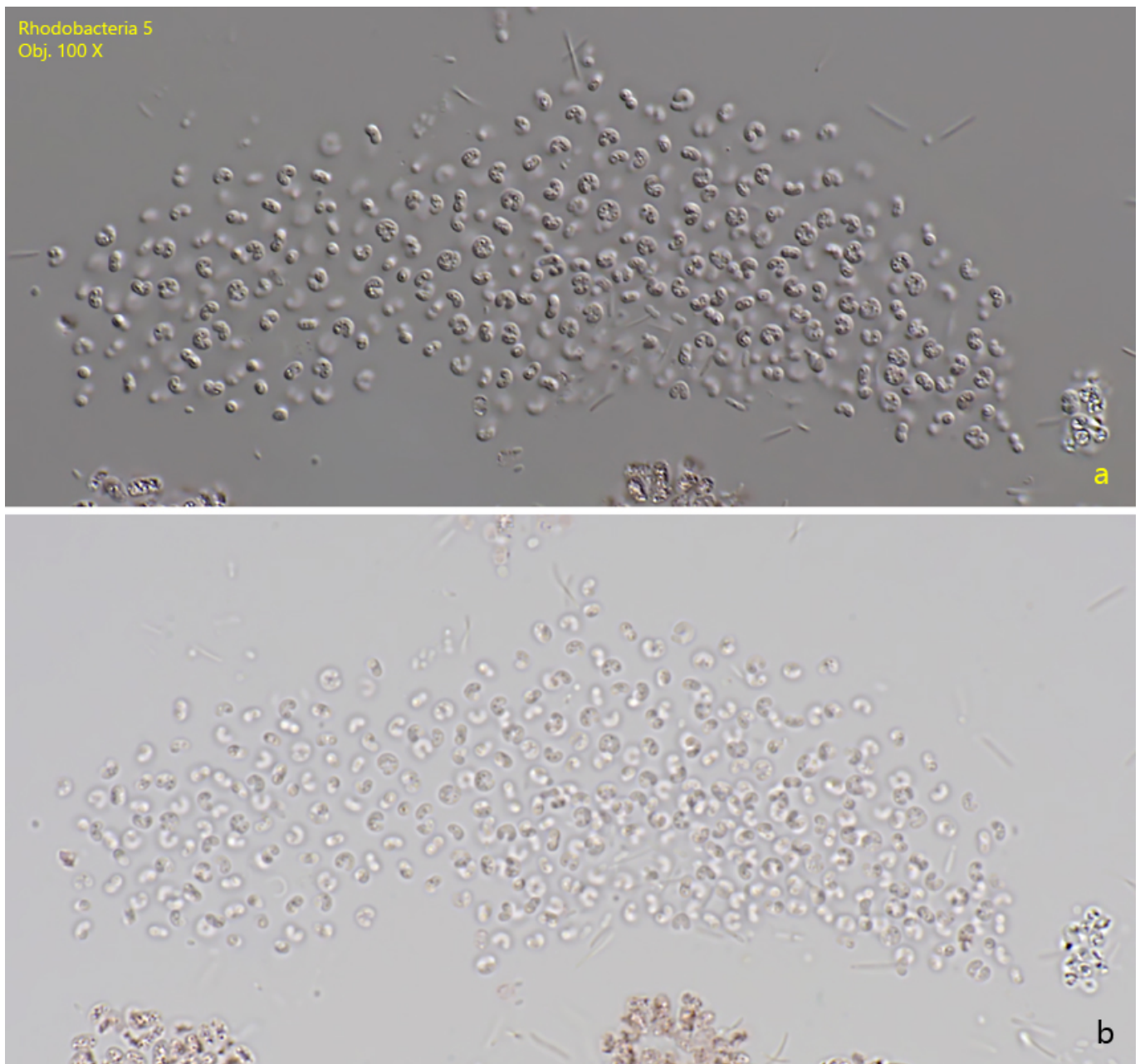
**Sampling location:** [Simmelried](#)

**Phylogenetic tree:** n.a.

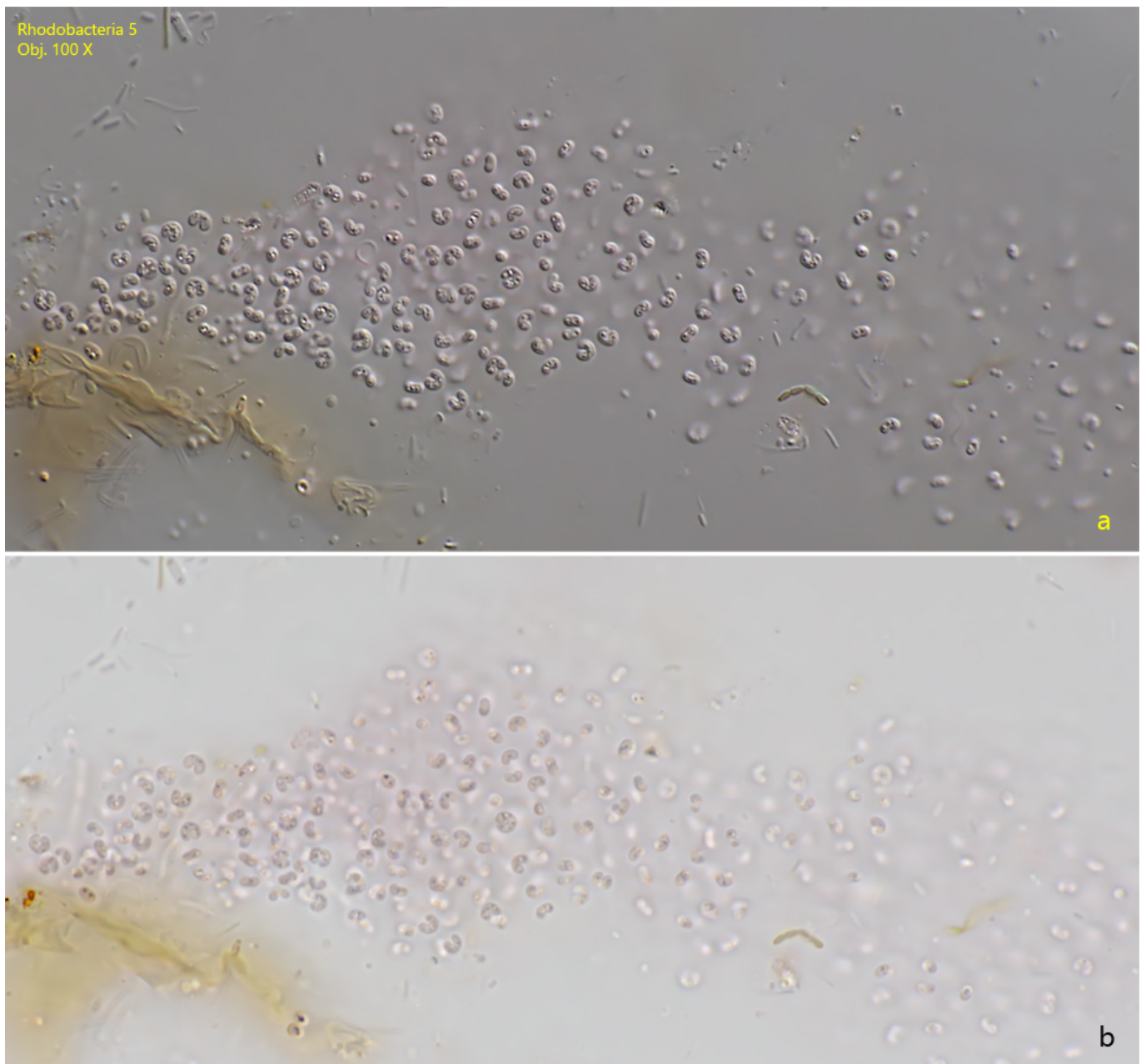
### **Diagnosis:**

- cells are U-shaped, sometimes curved
- length 2.3 – 2.6 µm, width 1.5 -2.1 µm
- cells filled with spherical granules
- color slightly pink
- colonies irregularly shaped without sharp outline
- no visible gelatinous sheath
- colonies of about 50 – 150 µm in diameter

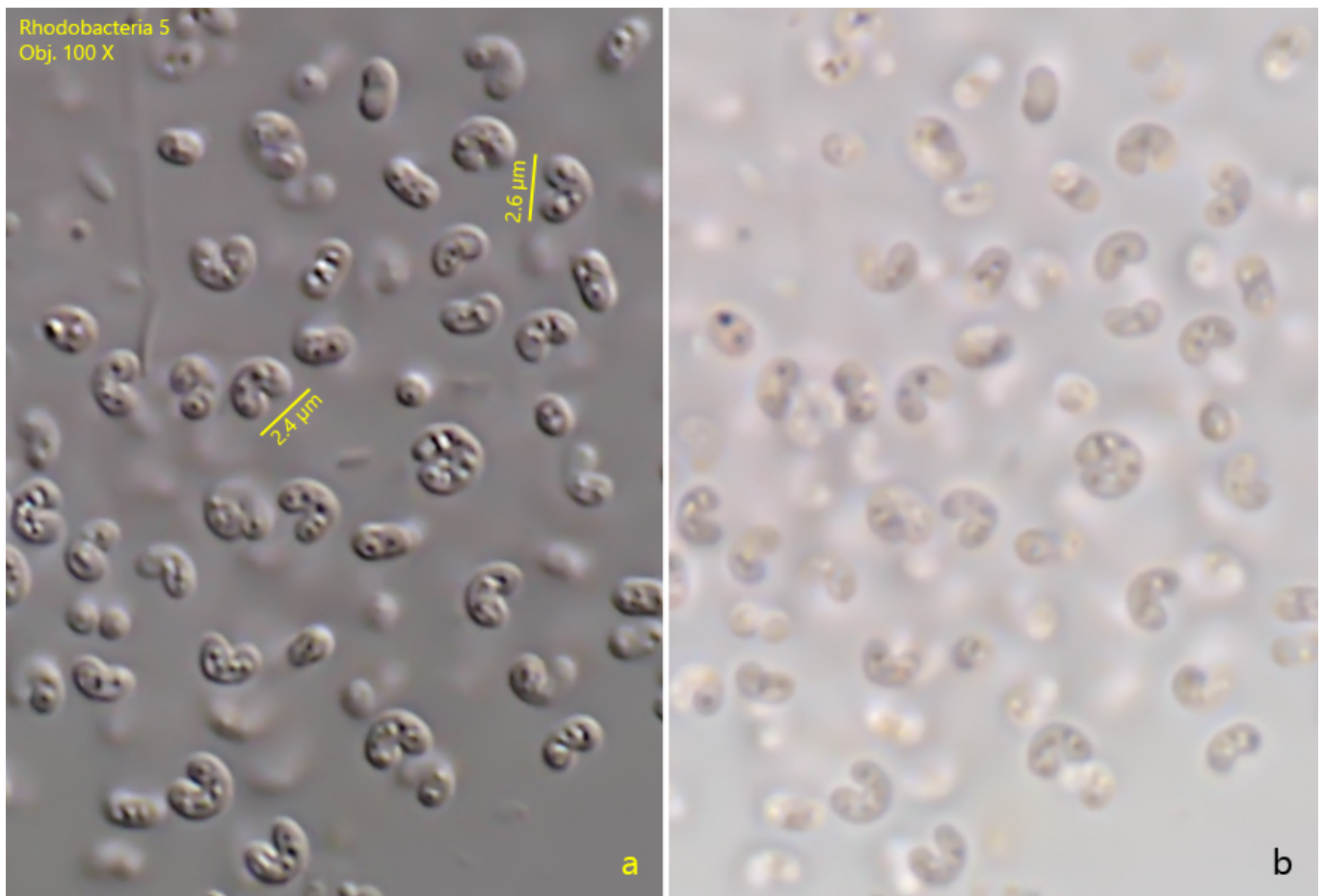
No drawings from previous authors available.



**Fig. 1 a-b:** *Rhodobacteria 5*.  $L = 2.6 \times B = 2.3 \mu\text{m}$ . A slightly squashed colony in DIC (a) and brightfield illumination (b). All cells are separated from each other. Obj. 100 X.



**Fig. 2 a-b:** *Rhodobacteria 5*.  $L = 2.6 \times B = 2.3 \mu\text{m}$ . A second slightly squashed colony in DIC (a) and brightfield illumination (b). Obj. 100 X.



**Fig. 3 a-b:** *Rhodobacteria 5*.  $L = 2.6 \times B = 2.3 \mu\text{m}$ . The U-shaped cells of *Rhodobacteria 5* in detail in DIC (a) and brightfield illumination (b). Several spherical inclusions are always visible in the cells. Obj. 100 X.