

## ***Rhodobacteria 8***

**Most likely ID:** n.a.

**Synonym:** n.a

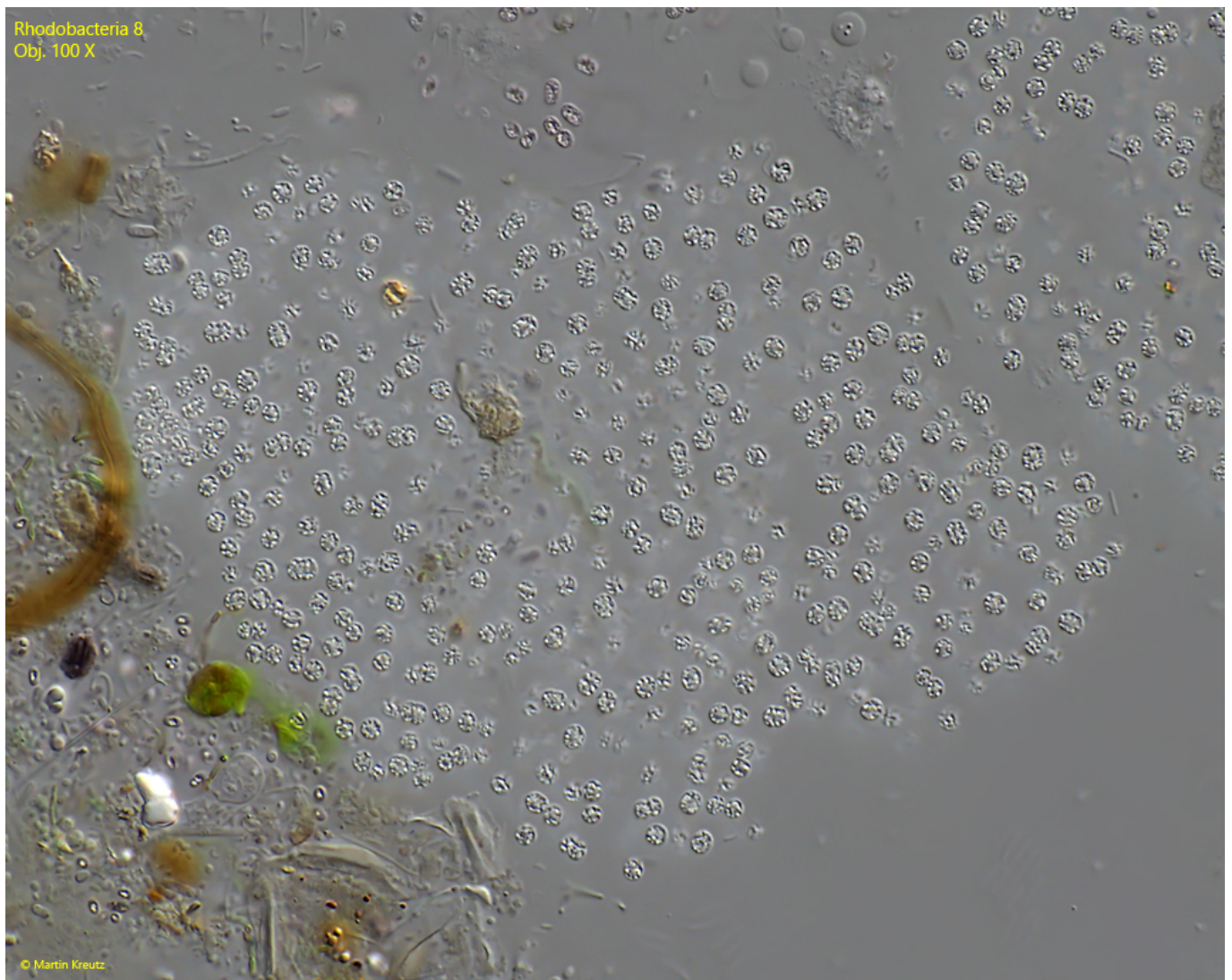
**Sampling location:** [Simmelried](#)

**Phylogenetic tree:** n.a.

### **Diagnosis:**

- the cells are spherical
- diameter 2.2. - 2.6  $\mu\text{m}$
- highly refractive mass mainly arranged in the periphery of cells
- colorless
- colonies irregularly shaped without sharp outline
- no visible gelatinous sheet
- colonies of about 50 - 150  $\mu\text{m}$  in diameter
- cells in colony are sparated from each other

No drawings from previous authors available.

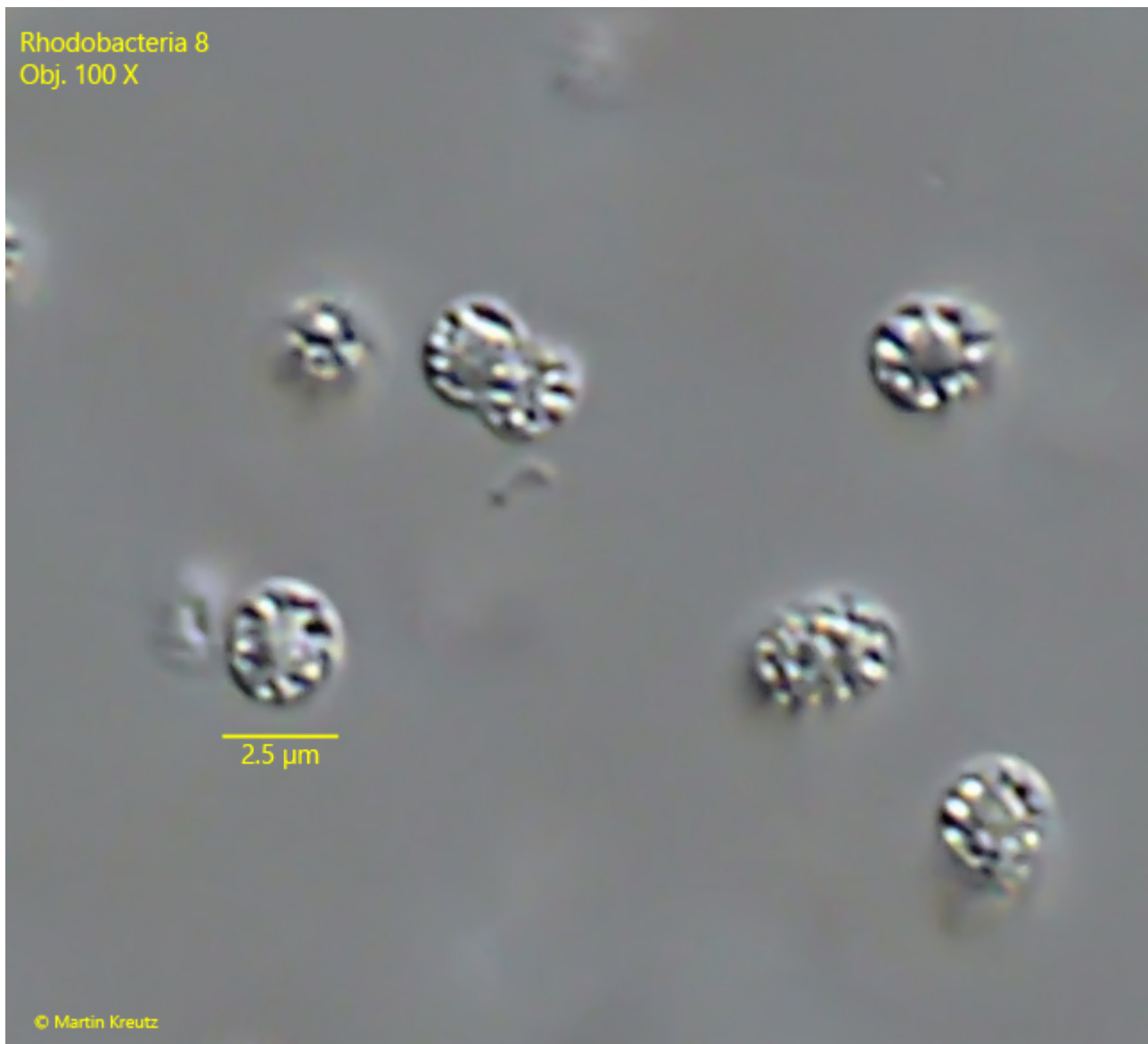


**Fig. 1:** *Rhodobacteria 8*.  $D = 2.2. - 2.6 \mu m$ . A slightly squashed colony. All cells are separated from each other. Obj. 100 X.



**Fig. 2:** *Rhodobacteria 8*.  $D = 2.2. - 2.6 \mu m$ . A more strongly squashed colony. All cells are separated from each other. Obj. 100 X.





**Fig. 3:** *Rhodobacteria 8*.  $D = 2.2. - 2.6 \mu\text{m}$ . The cells of a colony in detail. Note the refractive mass in the periphery of the cells. Obj. 100 X.