

***Squatinella leydigi* (Zacharias, 1886)**

**Most likely ID:** n.a.

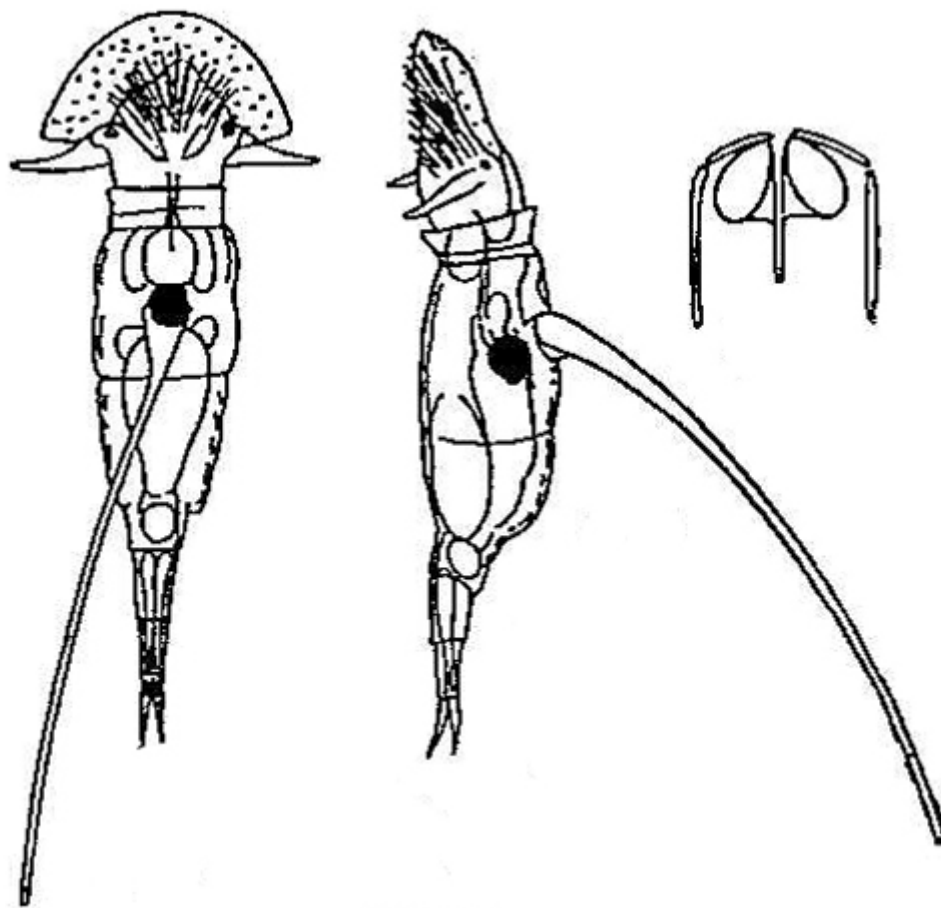
**Synonym:** n.a.

**Sampling location:** [Simmelried](#)

**Phylogenetic tree:** [Squatinella leydigi](#)

**Diagnosis:**

- lorica oval with one distinct dorsal spines
- dorsal spine (90-110  $\mu\text{m}$ ) with blunt, distal end
- head shield depressed, mushroom cap-shaped
- two lateral auricles below head shield
- length 110-200  $\mu\text{m}$
- ventral shield absent
- foot with three segments
- no spine on the third foot segment
- equal pair of slender, pointed toes

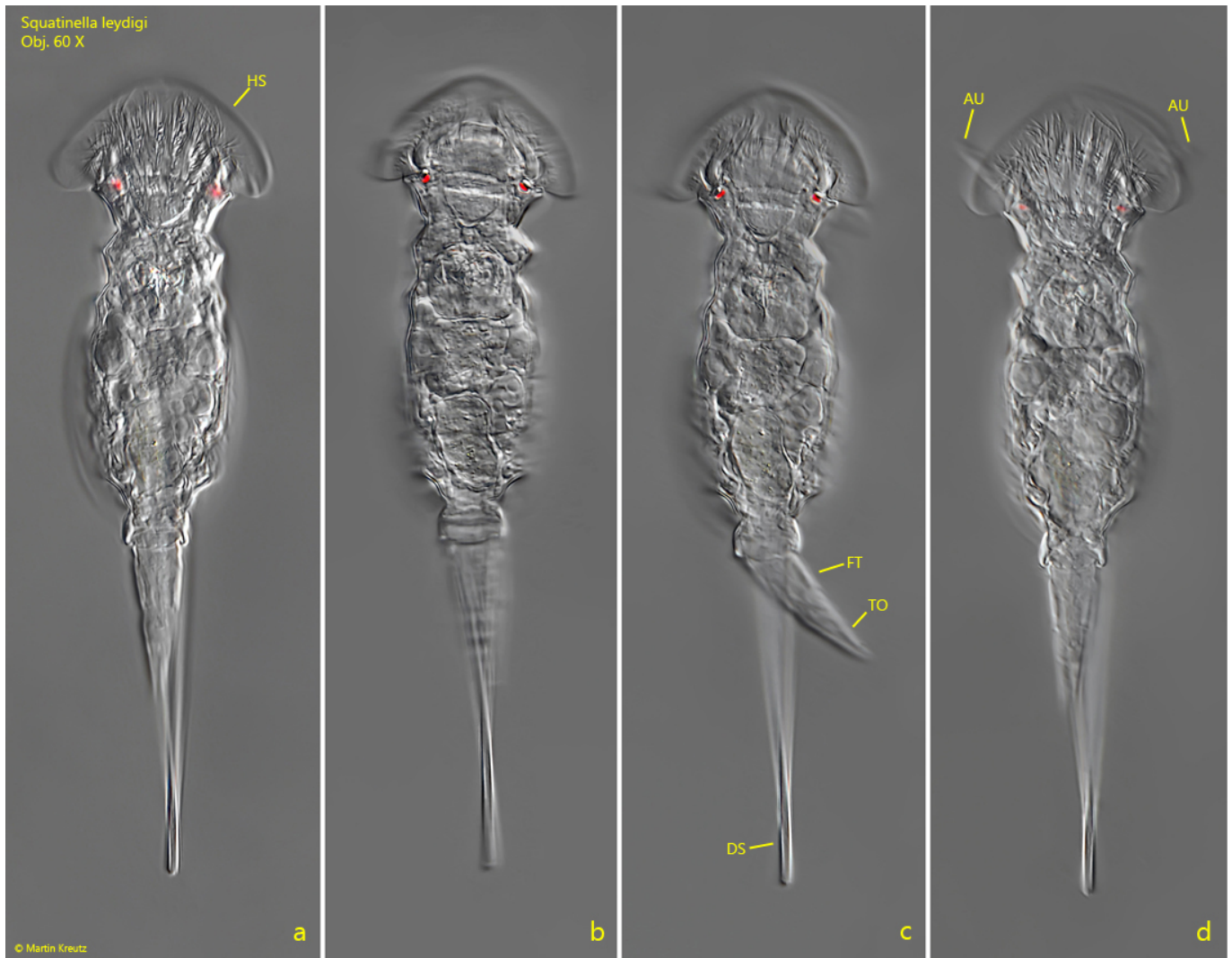


after Wulfert

*Squatinella leydigi*

So far I have only found one specimen of *Squatinella leydigi* in February 2017 in a sample from the [Simmelried](#). Unfortunately, I mistook the specimen for the similar species *Squatinella longispinata*, which is why I only took photos from the dorsal view (s. fig. 1 a-d).

Although the specimen is only visible from the dorsal side, it can be identified as *Squatinella leydigi*, because the head shield is shaped like a mushroom cap. The two lateral auricles can also be seen in the blur (s. fig. 1 d). Another characteristic feature of *Squatinella leydigi* is the blunt end of the dorsal spine (s. fig. 2).



**Fig. 1 a-d:** *Squatinella leydigi*. L = 137  $\mu$ m. Different focal planes from dorsal. Note the mushroom cap-shaped head shield (HS). The two lateral auricles (AU) are out of focal plane. DS = dorsal spine, FT = foot, TO = toes. Obj. 60 X.



**Fig. 2:** *Squatinella leydigi*. The blunt distal end of the dorsal spine (arrow). Obj. 60 X.