

Staurastrum teliferum* var. *gladiosum

(W.B.Turner) Coesel & Meesters, 2013

Most likely ID: n.a.

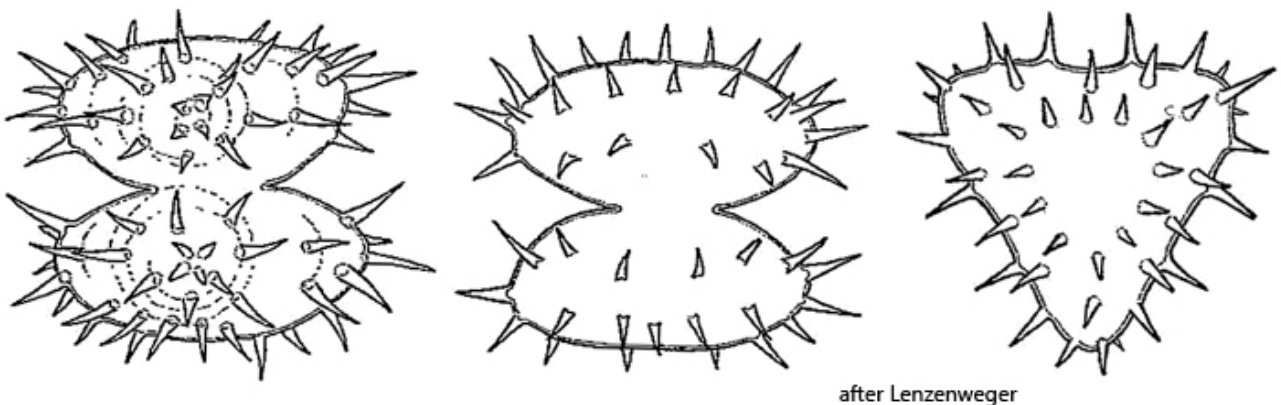
Synonym: *Staurastrum gladiosum*

Sampling location: [Lauchsee Moor \(Austria\)](#)

Phylogenetic tree: [Staurastrum teliferum var. gladiosum](#)

Diagnosis:

- cells 3-radiate
- semi-cells elliptical, with almost straight lateral sides
- length 36–42 μm , width 34–43 μm (excluding spines)
- apices slightly convex
- sinus deep, narrowed at an acute angle
- in apical view slightly concave sides
- cell wall with concentric rows of spines



Staurastrum teliferum var. *gladiosum*

I have only found *Staurastrum teliferum* var. *gladiosum* once so far, in June 2024 in the [Lauchsee Moor](#) in Austria. This variety differs from the main form *Staurastrum teliferum* by the somewhat flattened, broadly elliptical semi-cells and especially by the spines, which are arranged in concentric rows. This arrangement can be clearly

seen in fig. 1 a.

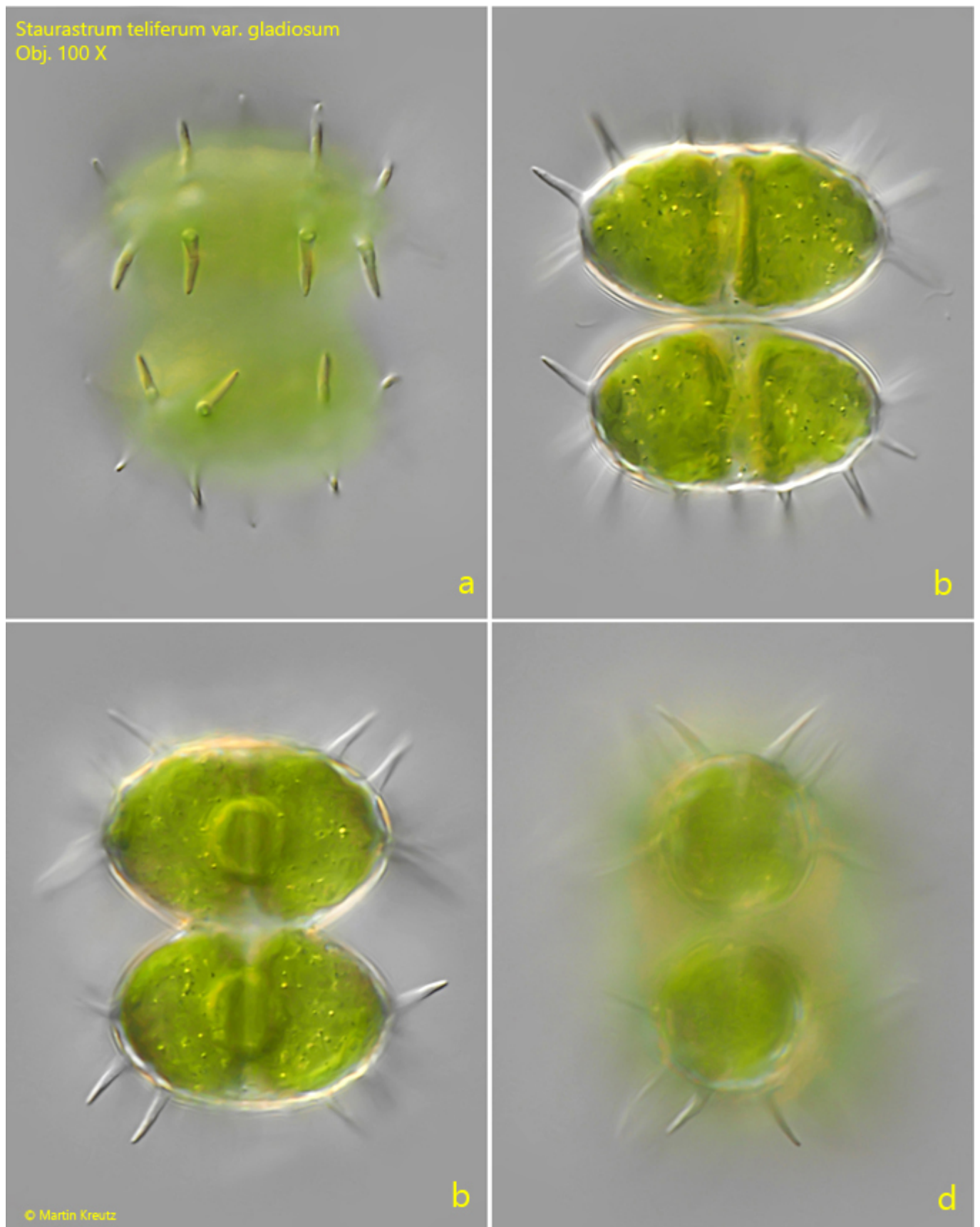


Fig. 1 a-d: *Staurastrum teliferum* var. *gladiusum*. L = 35 μ m (without spines). Different focal planes of a specimen. Note the spines in concentric rows (a). Obj.

100 X.