

***Trachelomonas manginii* f. *subpunctata***

**Safonova, 1963**

**Most likely ID:** n.a.

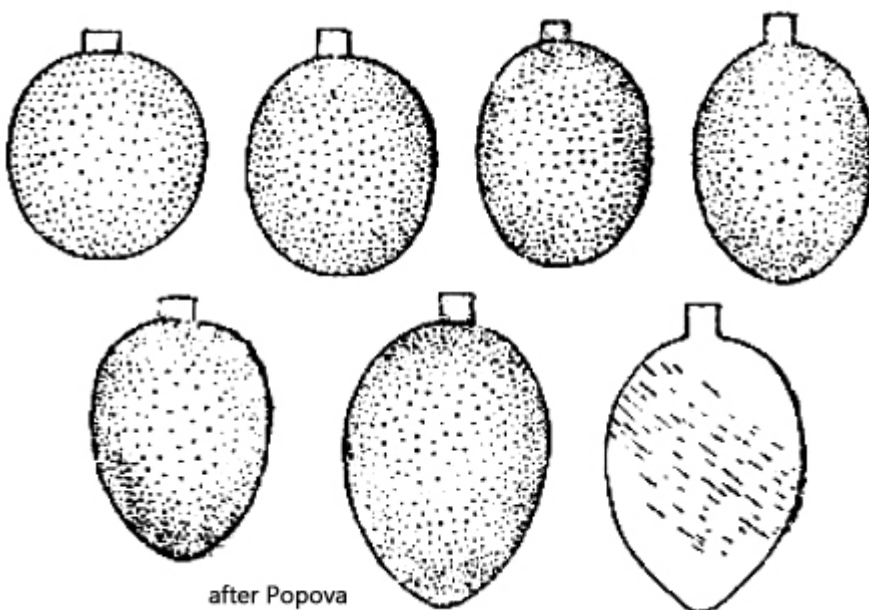
**Synonym:** n.a.

**Sampling location:** [Simmelried](#)

**Phylogenetic tree:** [Trachelomonas manginii](#) f. *subpunctata*

**Diagnosis:**

- lorica ellipsoidal, rhomboid or ovoid
- length 22.4–26.4  $\mu\text{m}$  (with neck)
- narrow neck cylindrical or subcylindrical
- lorica brownish or yellowish, finely dotted
- several disc-shaped chloroplasts without pyrenoid
- flagellum about twice body length
- eyespot large

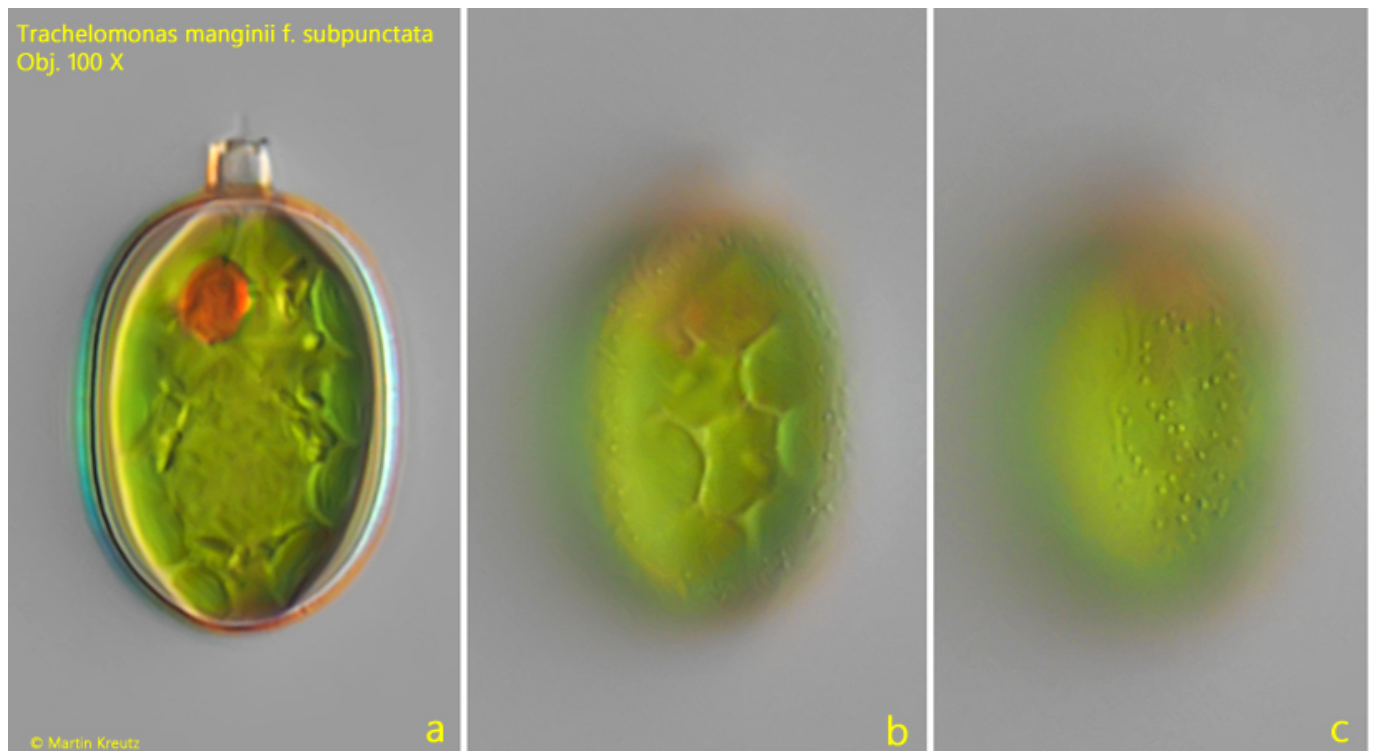


*Trachelomonas manginii* f. *subpunctata*

So far, I have found *Trachelomonas manginii* f. *subpunctata* exclusively in the [Simmelried](#). The shape of the lorica shows some variability. I have mainly found specimens with an almost spherical lorica (s. fig. 3 a-c) and ellipsoid specimens (s. figs. 1 a-c and 2 a-c). All specimens had a comparatively narrow neck, which is clearly set off from the lorica and has a cylindrical or slightly conical shape. The apical margin of the neck is smooth, without spines. The lorica has a uniform thickness and all specimens I examined had distinct punctation, as Popova (1966) illustrated (s. drawings above).

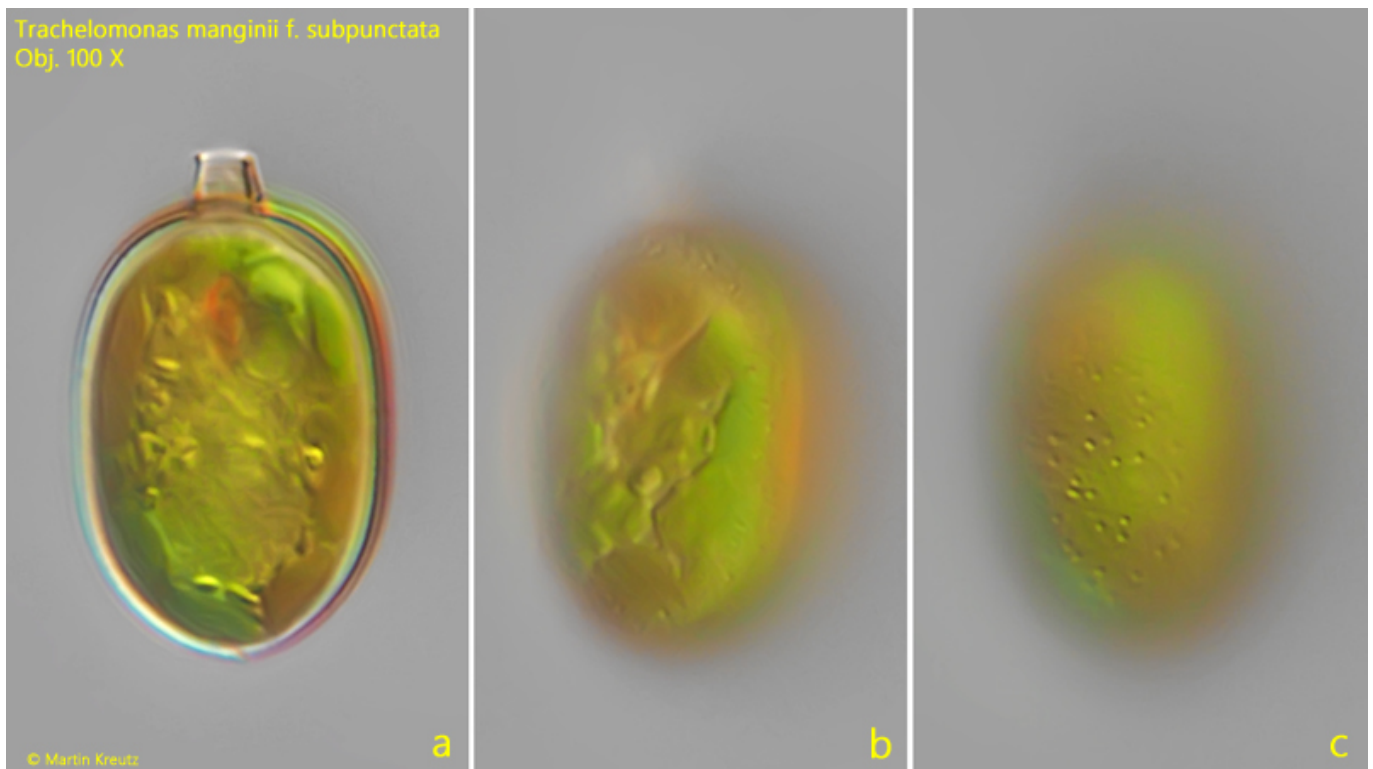
My specimens were about 10% larger than those investigated by Popova but corresponded in all other characteristics to the description of *Trachelomonas manginii* f. *subpunctata*. The basic form *Trachelomonas manginii* has a smooth shell without punctation but is otherwise identical.

The similar species *Trachelomonas planctonica* has a strongly punctuated or scrobiculate (furrowed, pitted) thick-walled lorica with a spherical or broadly ellipsoid shape and a cylindrical neck. The neck is 4–5  $\mu\text{m}$  wide and 2.6–4  $\mu\text{m}$  high (Huber-Pestalozzi, 1955). Popova also reports a neck height of up to 4  $\mu\text{m}$ . In my specimens, the neck was 3.6–4.2  $\mu\text{m}$  wide and 2.4–2.9  $\mu\text{m}$  high, thus narrower and shorter. It also had a smooth, non-serrated apical rim, and the thin-walled lorica had only fine punctation. These features indicate *Trachelomonas manginii* f. *subpunctata*.

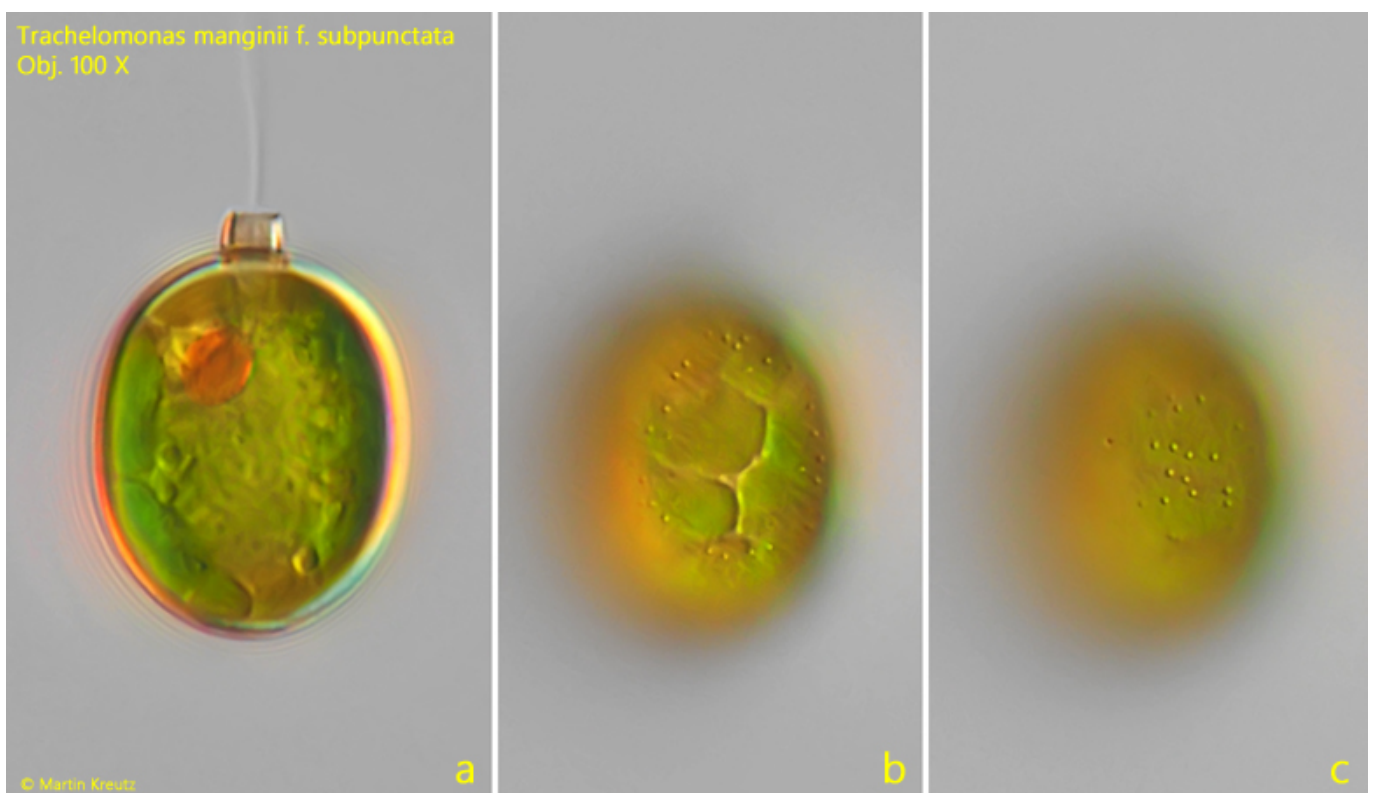


**Fig. 1 a-c:** *Trachelomonas manginii* f. *subpunctata*. L = 28  $\mu\text{m}$  (with neck). Three

focal planes of a freely swimming specimen. Note the dotted surface of the lorica (c). Obj. 100 X.



**Fig. 2 a-c:** *Trachelomonas manginii* f. *subpunctata*. L = 30  $\mu$ m (with neck). A second, freely swimming specimen. Obj. 100 X.



**Fig. 3 a-c:** *Trachelomonas manginii* f. *subpunctata*. L = 27  $\mu$ m (with neck). Three

focal planes of a third specimen. Obj. 100 X.