

***Trachelomonas oblonga* Lemmermann, 1899**

Most likely ID: n.a.

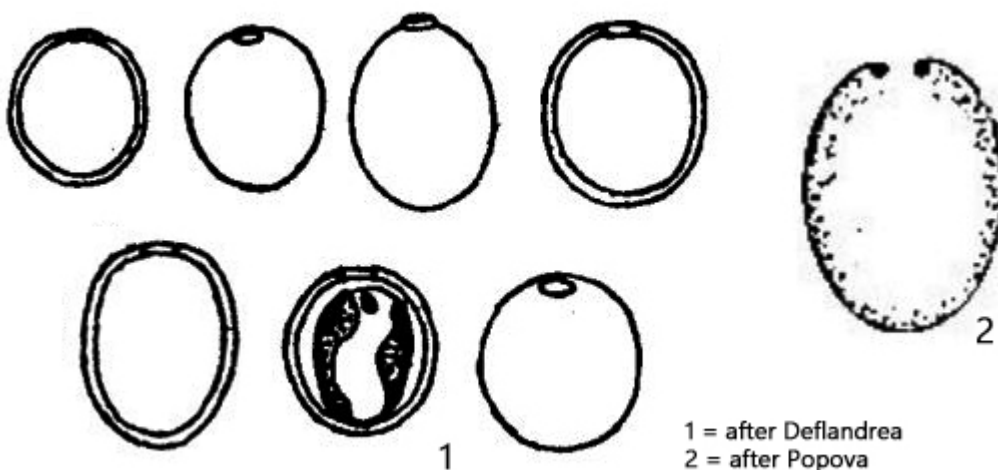
Synonym: n.a.

Sampling location: [Simmelried](#)

Phylogenetic tree: [Trachelomonas oblonga](#)

Diagnosis:

- lorica ellipsoidal
- length 12–19 μm , width 10–13 μm
- porus with or without thickening
- sometimes with very short neck
- lorica yellowish, brownish or redbrown, smooth
- several disc-shaped chloroplasts with pyrenoids
- flagellum about twice lorica length



Trachelomonas oblonga

I found *Trachelomonas oblonga* in the [Simmelried](#) among floating plants. However, the species is very rare there.

There are numerous varieties of *Trachelomonas oblonga*, which mainly differ in slight variations in the shape of the lorica. In general, *Trachelomonas oblonga* belongs to the smaller species within the genus. The wall of the lorica is comparatively thick and smooth. In my population, the porus also had no thickening or collar. The number of chloroplasts is given by Deflandre (1927) as two, which are arranged laterally and have no pyrenoids, while Popova (1966) as well as John et al. (2002) report several disc-shaped chloroplasts with pyrenoids.

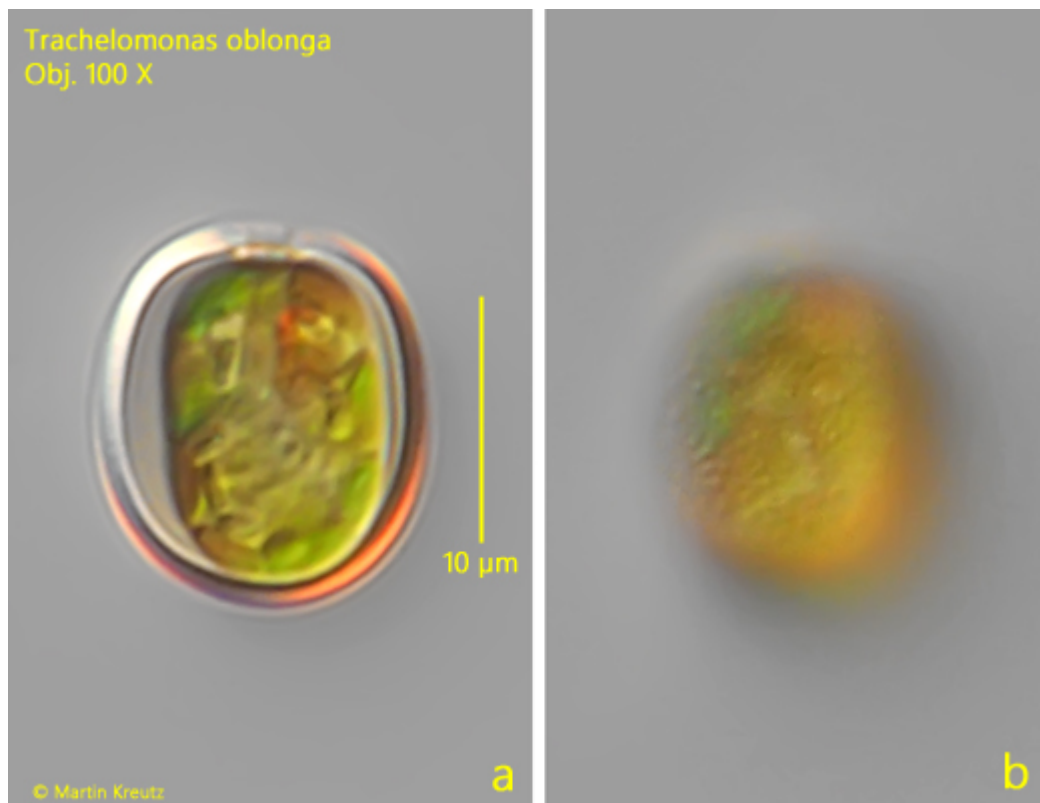


Fig. 1 a-b: *Trachelomonas oblonga*. L = 15.9 μm (of lorica). Two focal planes of a freely swimming specimen. Obj. 100 X.