

Trichocerca capucina

Wierzejski & Zacharias, 1893

Most likely ID: n.a.

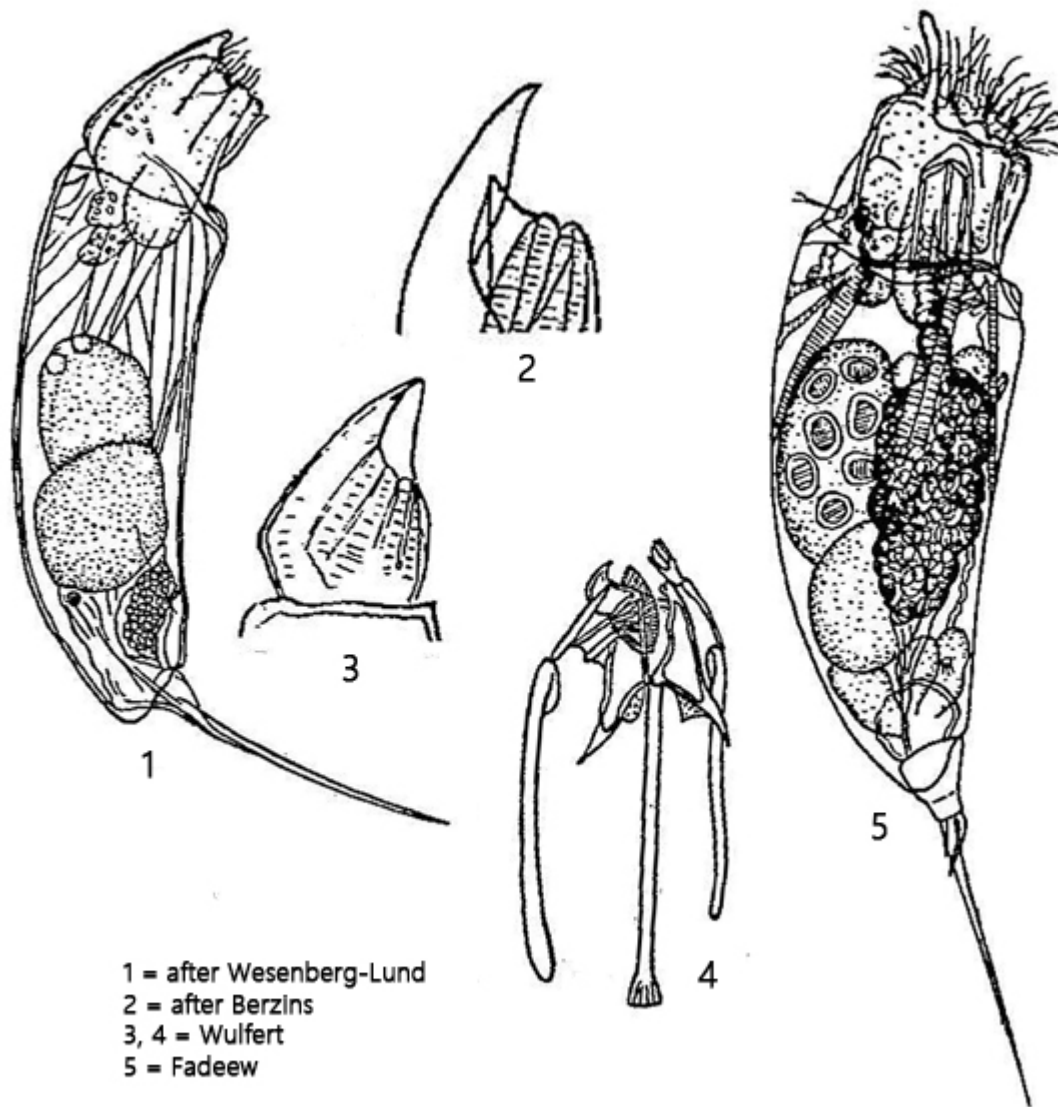
Synonym: n.a.

Sampling location: Pond of the campsite Fliesshorn

Phylogenetic tree: [Trichocerca capucina](#)

Diagnosis:

- body elongate and cylindrical
- dorsal anterior margin of lorica hood-shaped
- anterior collar of lorica foldable
- length 250–430 μm
- head with 5 apical palp organs
- head set off by transverse fold
- one almost straight main toe (90–125 μm)
- at least 6 secondary toes
- one cervical eyespot



Trichocerca capucina

I have only found *Trichocerca capucina* once so far. These were plankton samples from the pond at the Fliesshorn campsite in Dingelsdorf. The samples were taken in August 2024.

Trichocerca capucina is very large at around 400 µm in length and therefore very conspicuous in the samples. Even under light coverslip pressure, the specimens retract quickly and the typical “hood”, which is formed by the anterior margin of the lorica, can then be recognized (s. fig. 1 c). In addition, the collar of the lorica is foldable, thus closing the opening when the specimen retracts. The folds of the collar are easy to recognize (s. figs. 3 and 4). The head is separated from the body by a very clear transverse fold.

The specimens in my population were all very transparent, possibly due to a lack of food. The internal organs were therefore very easy to recognize (s. figs 1 a-c and 2). In contrast to the descriptions in the literature, I was able to identify at least 6 secondary toes (s. fig. 5). The literature reports a maximum of three (Koste, 1978). I cannot judge whether this is within the variability of the species or whether they were overlooked in the past. However, all secondary toes can only be recognized in strongly squashed specimens.

More images and information on *Trichocerca capucina*: [Michael Plewka-Freshwater life-Trichocerca capucina](#)

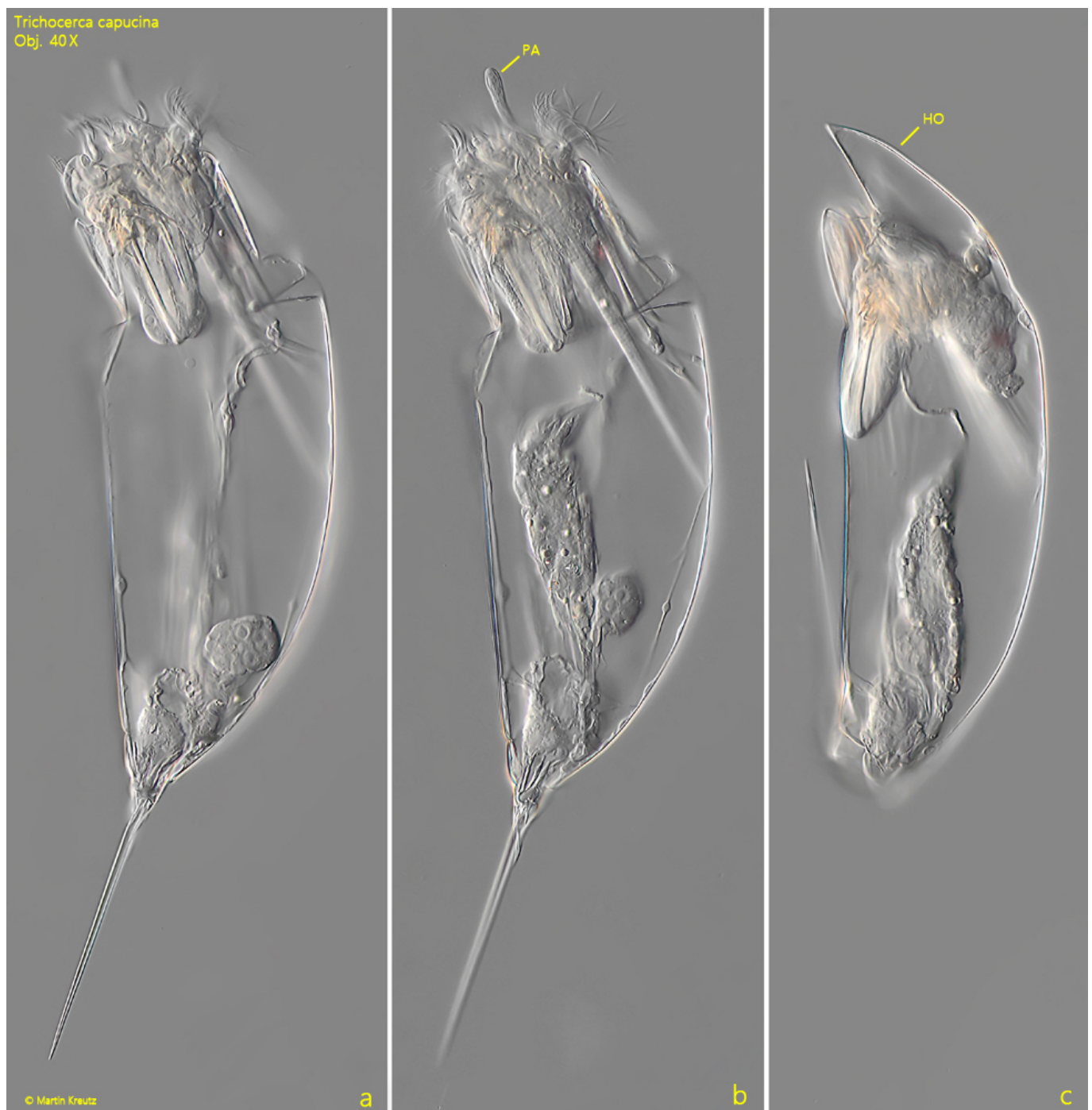
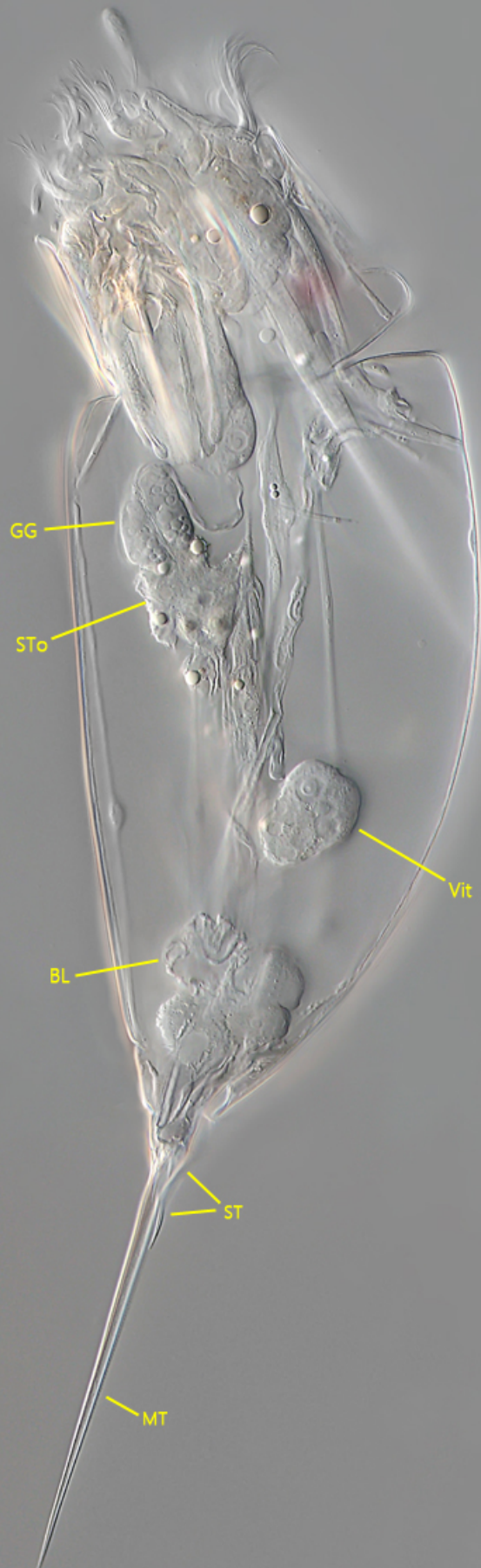


Fig. 1 a-c: *Trichocerca capucina*. L = 368 (with toe). A freely swimming (a, b) and retracted (c) specimen from left. Note the hood-shaped anterior margin (HO) of the lorica in the retracted specimen. PA = palp organ. Obj. 40 X.

Trichocerca capucina
Obj. 60 X



© Martin Kreutz

Fig. 2: *Trichocerca capucina*. L = 368 (with toe). The same specimen as shown in fig. 1 a-c in detail. BL = bladder, GG = gastric glands, MT = main toe, ST = secondary toes, STo = stomach, Vit = vitellarium. Obj. 60 X.

Trichocerca capucina
Obj. 60 X



© Martin Kreutz

Fig. 3: *Trichocerca capucina*. The foldable collar (CO) of a partly retracted specimen. Note the 4 (of 5) anterior palp organs (PA). Obj. 60 X.

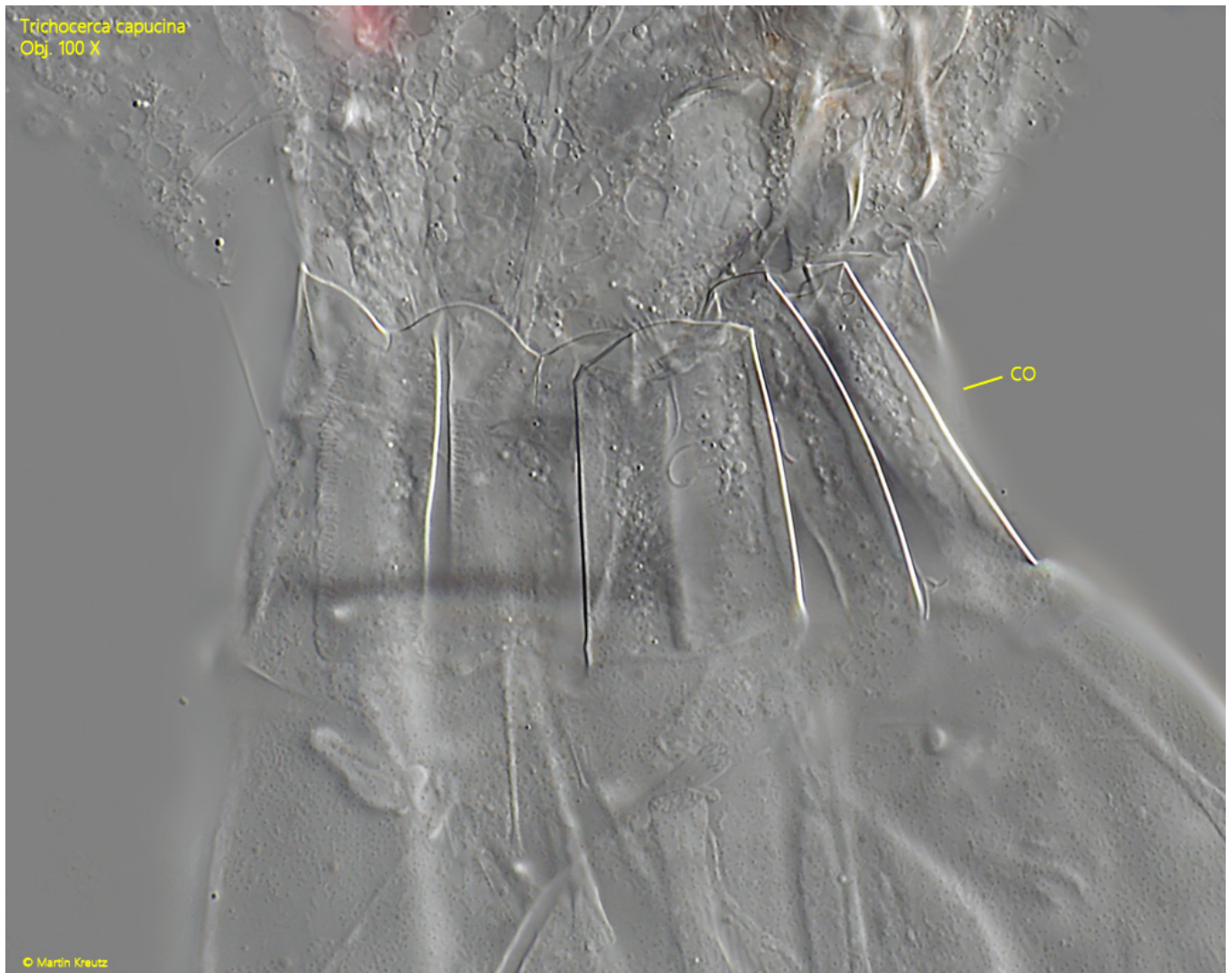


Fig. 4: *Trichocerca capucina*. The foldable collar (CO) in detail. Obj. 60 X.

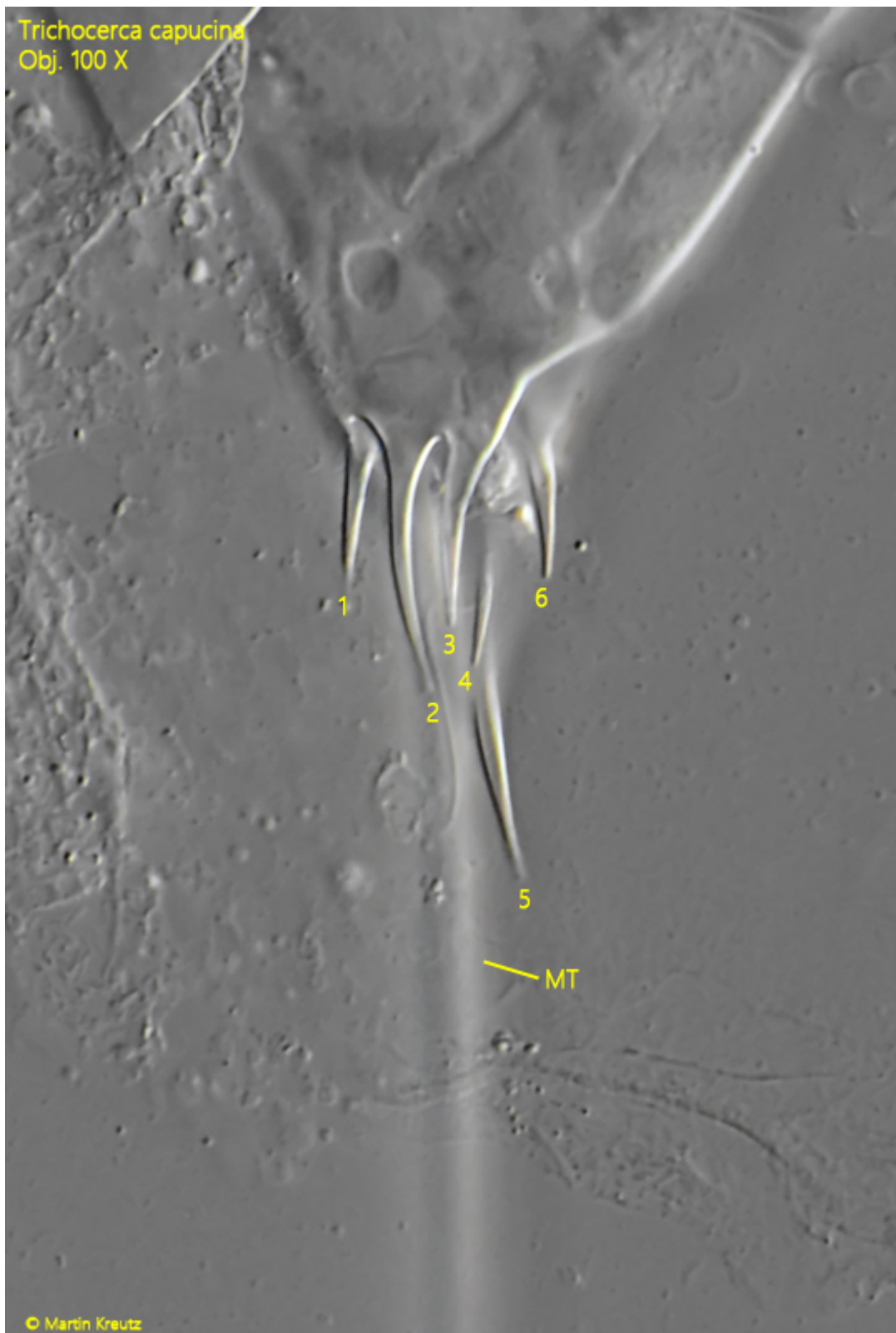


Fig. 5: *Trichocerca capucina*. The toes in a strongly squashed specimen. Apart from the main toe (MT) 6 secondary toes are visible (1-6). Obj. 100 X.

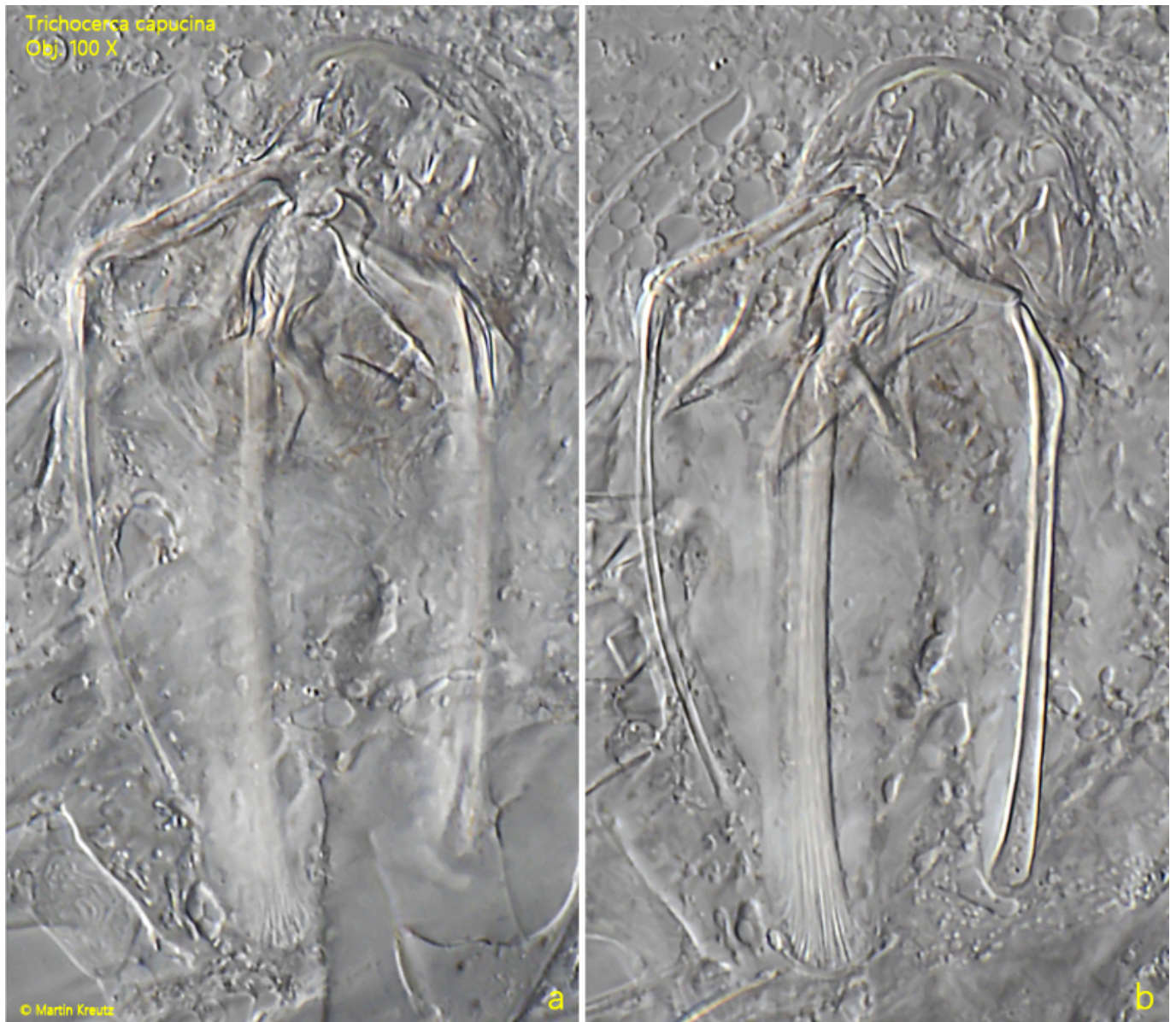


Fig. 6 a-b: *Trichocerca capucina*. Two focal planes of the trophi in a strongly squashed specimen. Obj. 100 X.