

Trichocerca dixon-nuttalli

Jennings, 1903

Most likely ID: n.a.

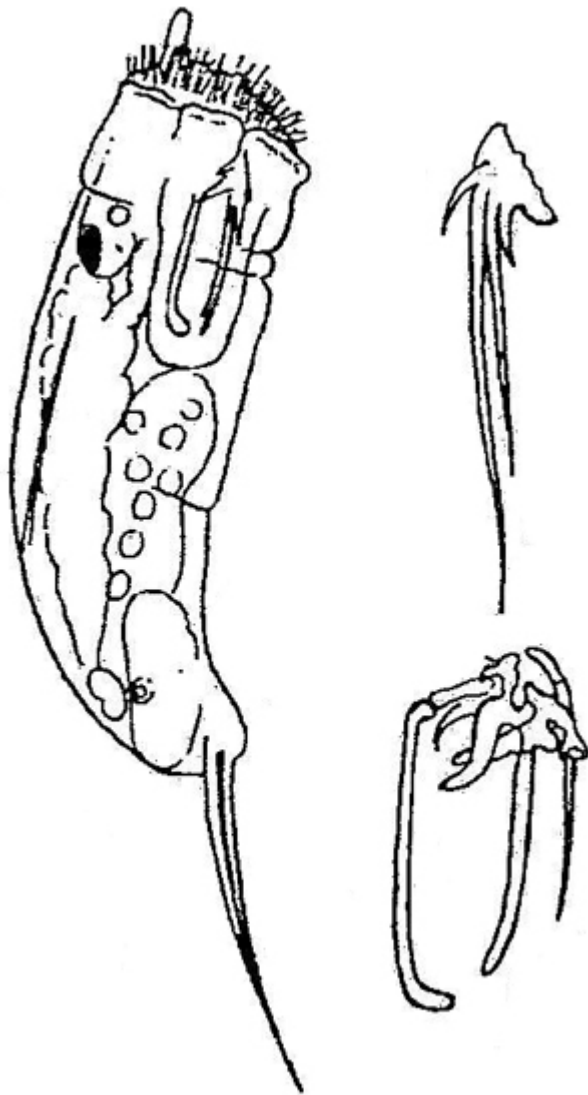
Synonym: n.a.

Sampling location: [Simmelried](#)

Phylogenetic tree: [Trichocerca dixon-nuttalli](#)

Diagnosis:

- body almost cylindrical, slightly curved
- anterior end folded with close head
- length 90–122 µm
- one apical palp organ
- two almost straight, parallel toes of different length
- two secondary, short toes (hard to see)
- gastric glands with irregular shape
- one cervical eyespot



after Jennings

Trichocerca dixon-nuttalli

So far, I have only found *Trichocerca dixon-nuttalli* in the [Simmelried](#) between floating plant masses and in the uppermost mud layer. However, I only find this species very rarely.

The main characteristics of *Trichocerca dixon-nuttalli* are the almost straight toes. These are two closely spaced toes of different lengths. The longer of the two toes has almost body length. The two toes are barely recognizable in freely swimming specimens, but only separate in squashed specimens (s. fig. 4). The two toes are accompanied by two secondary toes, which are considerably shorter and difficult to recognize. Another important feature are the irregularly shaped gastric glands, which have a slightly wavy surface (s. fig. 2 b). In addition, the right lateral antenna of *Trichocerca dixon-nuttalli* is shifted far posteriorly compared to the left lateral antenna. However, I could not recognize this feature.

More images and information on *Trichocerca dixon-nuttalli*: [Michael Plewka-Freshwater life-Trichocerca dixon-nuttalli](#)

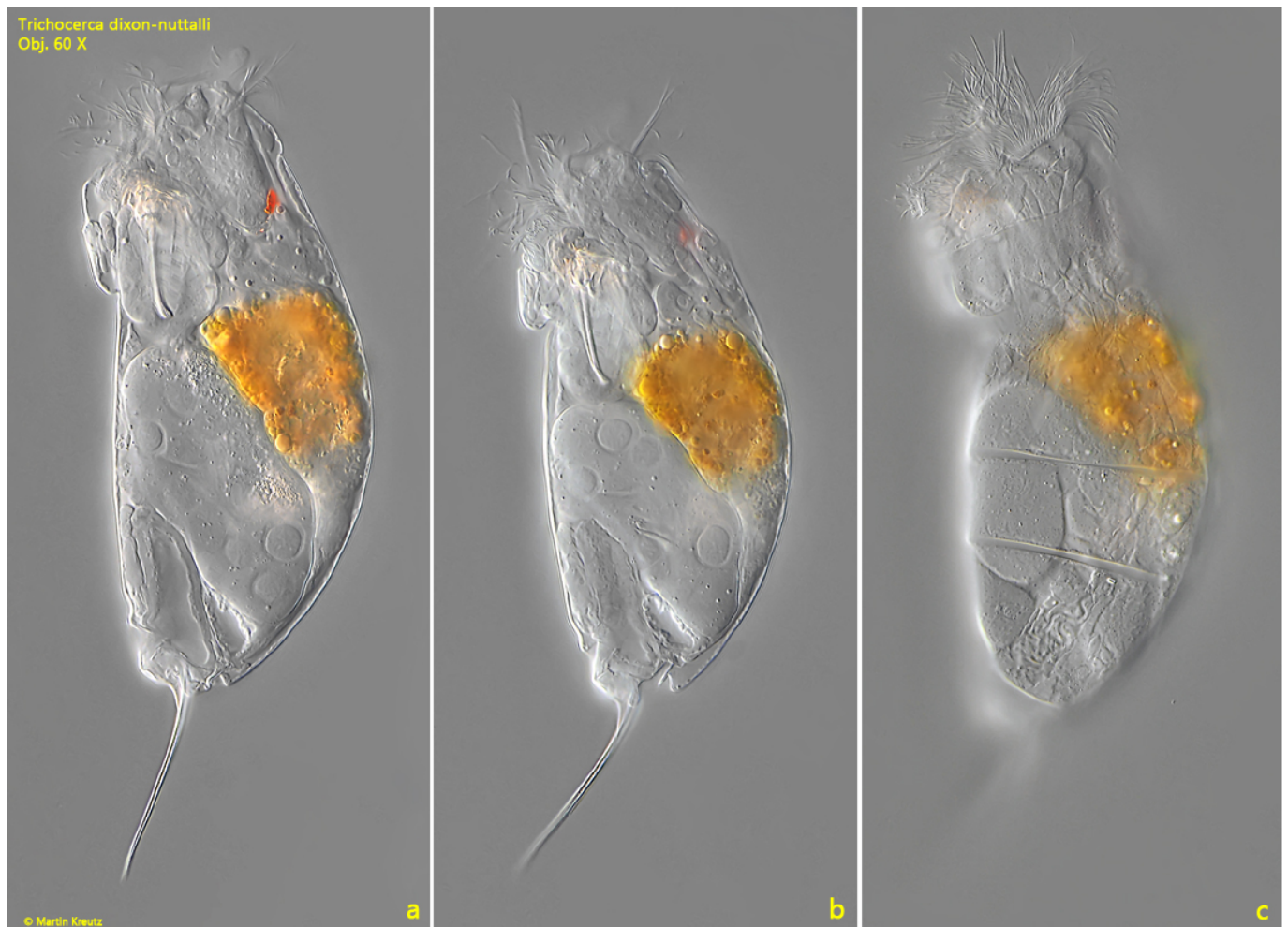


Fig. 1 a-c: *Trichocerca dixon-nuttalli*. L = 172 μm . Different focal planes of a slightly squashed specimen from left. Obj. 60 X.

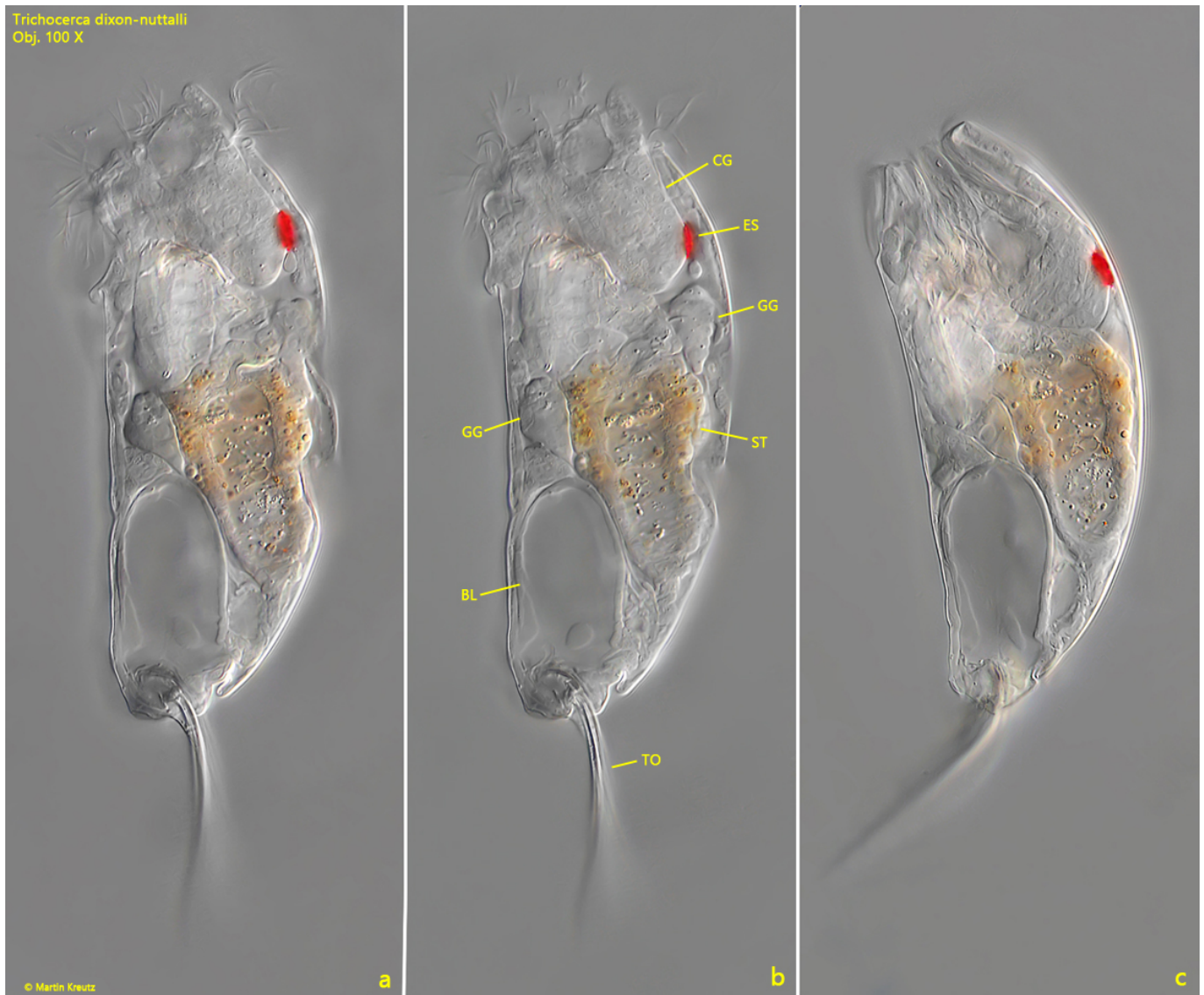


Fig. 2 a-c: *Trichocerca dixon-nuttalli*. L = 146 μ m. An extended (a, b) and contracted (c) second specimen. Note the irregularly shaped gastric glands. BL = bladder, CG = cerebral ganglion, ES = eyespot, ST = stomach, TO = toes. Obj. 100 X.

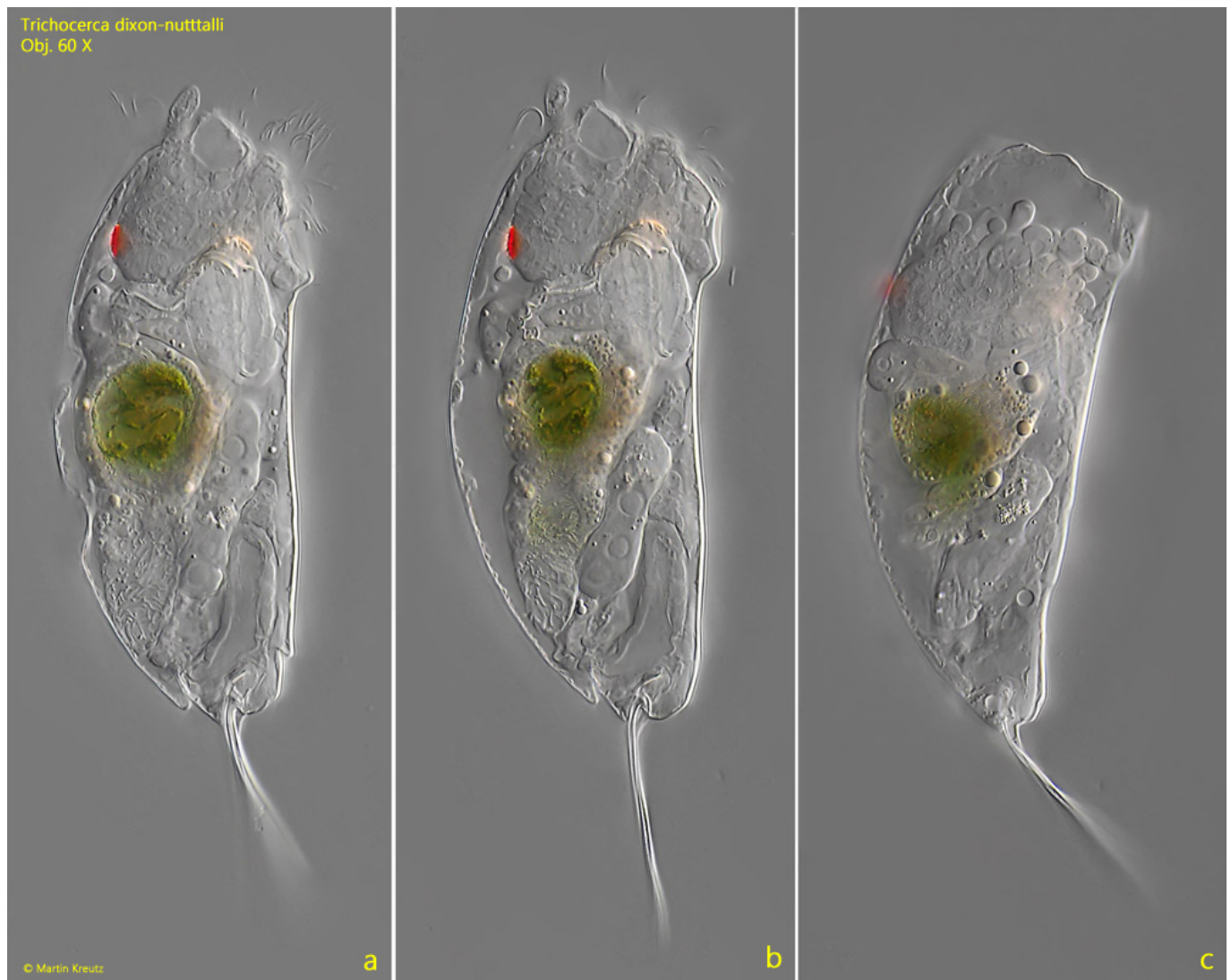


Fig. 3 a-c: *Trichocerca dixon-nuttalli*. L = 161 μm . A third specimen from right. Obj. 60 X.



Fig. 4: *Trichocerca dixon-nuttalli*. The two toes (TO 1, TO 2) in a squashed specimen. Obj. 100 X.



Fig. 5: *Trichocerca dixon-nuttalli*. The trophi in a strongly squashed specimen. Obj. 100 X.