

***Vorticella aquadulcis* Stokes, 1887**

Most likely ID: n.a.

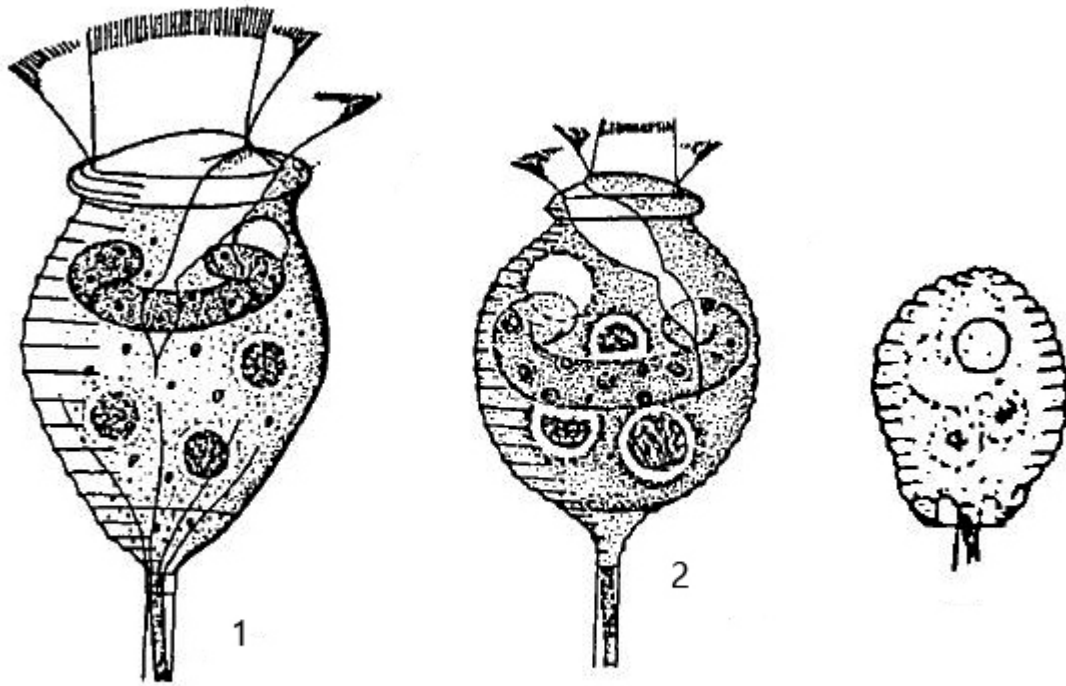
Synonyms: *Vorticella striata octava*, *Vorticella octava*, *Vorticella striata*, *Vorticella latestriata*, *Vorticella platysoma*, *Vorticella astyliformis*, *Vorticella octava costata*.

Sampling location: [Hagstaffel pond](#), [Simmelried](#)

Phylogenetic tree: [Vorticella aquadulcis](#)

Diagnosis:

- length 25–55 µm, width 15–35 µm
- cells pyriform
- contracted cells oviform
- plasm colorless
- one contracile vacuole
- macronucleus horseshoe-shaped, located in anterior half
- pellicle is widely striped, 13–30 horizontal stripes
- stalk contracts in spirals
- solitary



1, 2 = after Foissner
3 = after Noland & Finlay (contracted specimen)

Vorticella aquadulcis

I found *Vorticella aquadulcis* in 1998 in [Hagstaffel pond](#) attached to colonies of the planktonic cyanobacterium *Anabaena flos-aquae* and 2023 on coverslips floating on samples from [Simmelried](#). *Vorticella aquadulcis* can be easily recognized by the widely spaced striation of the pellicle and the horseshoe-shaped macronucleus, which is located in the anterior half of the cell. The species occurs exclusively solitary and does not form pseudocolonies as do many other species of the genus *Vorticella*. Many synonymous species are grouped under *Vorticella aquadulcis*, which is why it is also called the “*Vorticella aquadulcis* complex” (s. Synonyms above).

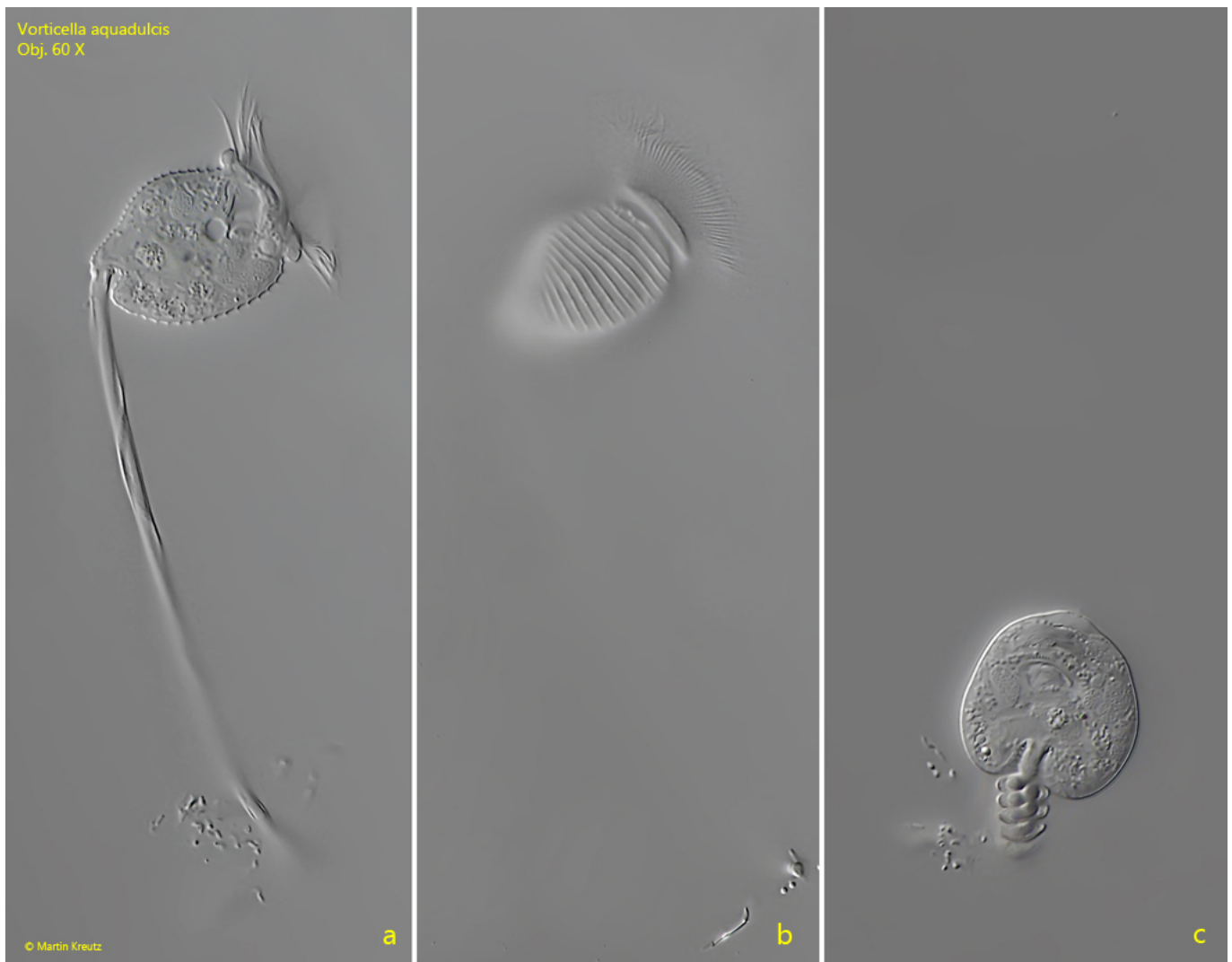
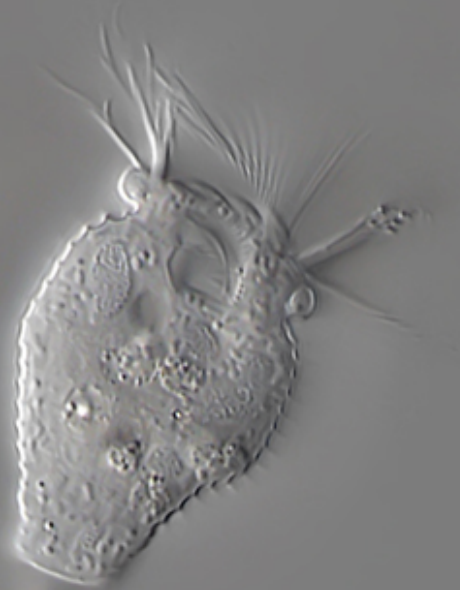


Fig. 1 a-c: *Vorticella aquadulcis*. L = 32 μ m. Two focal planes of a fully extended specimen (a, b) and a fully contracted specimen (c). Note the widely spaced striation of the pellicle (b). Obj. 60 X.



Fig. 2 a-b: *Vorticella aquadulcis*. L = 31 μm . Two focal planes of a seceond, fully extended specimen. Obj. 60 X.

Vorticella aquadulcis
Obj. 100 X



10 μ m

© Martin Kreutz

Fig. 3: *Vorticella aquadulcis*. L = 33 μm . A fully extended specimen in detail. Obj. 100 X.



Fig. 4: *Vorticella aquadulcis*. A strongly squashed specimen to visualize the single contractile vacuole (CV) and the horseshoe-shaped macronucleus (Ma). Obj. 100 X.